

UNITED STATES DEPARTMENT OF THE INTERIOR  
NATIONAL PARK SERVICE

FOR NPS USE ONLY	
RECEIVED	APR 8 1975
DATE ENTERED	SEP 5 1975

## NATIONAL REGISTER OF HISTORIC PLACES INVENTORY -- NOMINATION FORM

SEE INSTRUCTIONS IN HOW TO COMPLETE NATIONAL REGISTER FORMS  
TYPE ALL ENTRIES -- COMPLETE APPLICABLE SECTIONS

### 1 NAME

HISTORIC Boston-Edison Historic District

AND/OR COMMON Boston-Edison Historic District

### 2 LOCATION

*Roughly bounded by*  
Edison on the south, Woodward on the east, Glynn Court, (Woodward  
to Hamilton) then alley south to Glynn Court (Hamilton to  
36 block area. Linwood) on the north, and Linwood NOT FOR PUBLICATION on the west.

CITY, TOWN Detroit VICINITY OF 13th CONGRESSIONAL DISTRICT  
STATE Michigan CODE 026 COUNTY Wayne CODE 163

### 3 CLASSIFICATION

CATEGORY	OWNERSHIP	STATUS	PRESENT USE
<input checked="" type="checkbox"/> DISTRICT	<input type="checkbox"/> PUBLIC	<input checked="" type="checkbox"/> OCCUPIED	<input type="checkbox"/> AGRICULTURE <input type="checkbox"/> MUSEUM
<input type="checkbox"/> BUILDING(S)	<input type="checkbox"/> PRIVATE	<input type="checkbox"/> UNOCCUPIED	<input type="checkbox"/> COMMERCIAL <input type="checkbox"/> PARK
<input type="checkbox"/> STRUCTURE	<input checked="" type="checkbox"/> BOTH	<input type="checkbox"/> WORK IN PROGRESS	<input type="checkbox"/> EDUCATIONAL <input checked="" type="checkbox"/> PRIVATE RESIDENCE
<input type="checkbox"/> SITE	<b>PUBLIC ACQUISITION</b>	<b>ACCESSIBLE</b>	<input type="checkbox"/> ENTERTAINMENT <input type="checkbox"/> RELIGIOUS
<input type="checkbox"/> OBJECT	<input type="checkbox"/> IN PROCESS	<input checked="" type="checkbox"/> YES: RESTRICTED interior	<input type="checkbox"/> GOVERNMENT <input type="checkbox"/> SCIENTIFIC
	<input type="checkbox"/> BEING CONSIDERED	<input type="checkbox"/> YES: UNRESTRICTED only	<input type="checkbox"/> INDUSTRIAL <input type="checkbox"/> TRANSPORTATION
		<input type="checkbox"/> NO	<input type="checkbox"/> MILITARY <input type="checkbox"/> OTHER:

### 4 OWNER OF PROPERTY

NAME Multiple Ownership

STREET & NUMBER  
CITY, TOWN Detroit VICINITY OF Michigan STATE

### 5 LOCATION OF LEGAL DESCRIPTION

COURTHOUSE, REGISTRY OF DEEDS, ETC. Wayne County Register of Deeds

STREET & NUMBER City-County Building, 2 Woodward Avenue

CITY, TOWN Detroit STATE Michigan

### 6 REPRESENTATION IN EXISTING SURVEYS

TITLE Michigan History Division, Registered Local Site No. 266

DATE November, 1973  FEDERAL  STATE  COUNTY  LOCAL

DEPOSITORY FOR SURVEY RECORDS Michigan History Division, Department of State

CITY, TOWN Lansing, STATE Michigan 48918

# 7 DESCRIPTION

## CONDITION

EXCELLENT       DETERIORATED  
 GOOD             RUINS  
 FAIR              UNEXPOSED

## CHECK ONE

UNALTERED  
 ALTERED

## CHECK ONE

ORIGINAL SITE  
 MOVED      DATE \_\_\_\_\_

### DESCRIBE THE PRESENT AND ORIGINAL (IF KNOWN) PHYSICAL APPEARANCE

The Boston Edison Historic District is bounded by Edison on the south, Woodward Avenue on the east, Glynn Court on the north as far west as Hamilton. At this point the boundary swings south one half block before turning back west along the alley until it reaches Linwood which is the western boundary of the district.

All of the structures (approximately 900) within this 36 block area are large single residences, and the great majority were built between 1900 and 1925. While eclectic in style, they possess a uniformity in roof line, in scale, in set-back from the street, and in the use of stone or brick construction.

There is a definite correlation between the size of the homes, and their location within the district. This is due to the variations in the size of the lots, and to building regulations which stipulate the minimum distance between the sides of the house and the lot on which it stands. The lots in the area around Longfellow and Hamilton are frequently one hundred seventy-five feet long by fifty or seventy-five feet wide. Frequently two would be utilized for one house. By comparison, as one moves south and west across the district, the size of the lots diminishes until in the area south of Longfellow and west of Twelfth Street the average lot size is forty feet wide by one hundred thirty-three feet long. The result is that while homes in this area are still relatively large, they are visibly more crowded together. Nevertheless, this was not the poorer side of the district. Both Henry Ford and J. L. Webber, manager of the chain of Hudson's Department stores lived in this area.

The architecture in the Boston-Edison District, as is characteristic of most residential districts constructed in the early part of the twentieth century, shows influence from many different styles. For this reason, it will be more useful to classify the homes on the basis of recurring architectural features. By using this approach, the houses in the district can, with very few exceptions, be placed in four broad groups. Examples of each group are discussed in the supplement.

The first group is characterized by large palatial homes. These are built of stone, brick, or brick covered with stucco, and always have two or three stories. The fronts of these houses feature elaborate entranceways and porches which may run the width of the house. Fanlights over the doors and windows are common as are double windows which open onto the front porch. The interiors will have large high-ceilinged rooms highlighted by lavish ornamentation. The roofs are frequently pitched, and frequently covered with tile. In addition, many of these homes are situated in elaborate gardens.

The second group is made up of brick homes smaller than those in the first group. Two clear influences are visible; the Georgian Revival Style and, to a lesser degree, the Georgian Colonial Style. These houses can be divided into two sub-groups; those with decorated facades and those with plain facades. Decorated facades range from the neat lines of the Georgian Colonial to Georgian Revival style homes whose elaborate porches frequently feature porticoes supported by free standing columns. In some cases, these porticoes give way to entrances decorated by heavy broken pediments. Both bay and dormer windows are common, and are usually decorated in the same style as the entranceway. By comparison, those homes with plain facades are little more than rectangular brick structures.

(continued)

UNITED STATES DEPARTMENT OF THE INTERIOR  
NATIONAL PARK SERVICE

FOR NPS USE ONLY	
RECEIVED	APR 18 1976
DATE ENTERED	SEP 5 1975

**NATIONAL REGISTER OF HISTORIC PLACES  
INVENTORY -- NOMINATION FORM**

CONTINUATION SHEET

ITEM NUMBER 7 PAGE 1

#7. Description (continued)

They may or may not have bay windows in front. What decoration there is, is confined to simple brick hood mouldings and/or wooden shutters on the windows. Occasionally bits of stone are used to highlight detail.

The third group can be termed English style homes. While there is some lingering influence of the Cottage style with its timber framed second story, the most prominent influence is English Renaissance. Homes in this group are usually two or three storied structures with massive gables which rise above the roof. The basic exterior construction is brick lined with stone. Windows are square, and almost always outlined in stone. They occur in groups and are frequently treated as bay windows. The size of these houses can vary, but the larger ones are sometimes situated within elaborate gardens.

The last group of homes can be termed early twentieth century residential. They are large and comfortable and almost totally lacking in architectural significance. These homes usually contain two or two and one half stories with a large porch on the front and an overhanging hip roof.

The only intrusion within the district is the John Lodge Expressway. The Lodge which expressway which divides the district in half, is at this point a sunken highway. This fact minimizes its impact on the area. There is suprisingly little noise pollution, and the Boston-Edison Protective Association has inaugurated plans to counteract the visual pollution caused by the expressway. These plans include revising the traffic flow through the district, and planting trees and flowers along the borders of the expressway to harmonize it with the atmosphere of the neighborhood.

The boundaries for this district were chosen because of the visual element which distinguishes the historic district from its surroundings. The domestic areas to the north and south of the district are smaller, generally frame construction and less homogeneous than the historic district.

On the west side of the district at Linwood and Chicago is a seminary which extends west for several blocks. On the east side of the district opposite Glynn Court at Woodward is the Blessed Sacrament Church, a major church in the area. Also on the east side is the Woodward Corridor, a section of small businesses between Edison and Grand Boulevard, on the east side of Woodward.

Open space areas are found at Woodward and Chicago, and Chicago and Twelfth Streets (N.W. corner, 2 lots wide). Voigt's Park (one full block) is located in the southeast section of the district.

As of December, 1974, there are approximately 20 residences owned by the Department of Housing and Urban Development.

UNITED STATES DEPARTMENT OF THE INTERIOR  
NATIONAL PARK SERVICE

FOR NPS USE ONLY

RECEIVED APR 18 1975

DATE ENTERED

SEP 5 1975

**NATIONAL REGISTER OF HISTORIC PLACES  
INVENTORY -- NOMINATION FORM**

CONTINUATION SHEET

ITEM NUMBER 7 PAGE 2

#7. Description (continued) Supplement.

Group I  
Large Palatial Homes (photo #1)

The S. S. Kresge house at 70 Boston Boulevard West is a three story stuccoed brick structure whose measurements are one hundred forty-five feet long by forty feet wide. It was designed by Meade Hamilton architects and erected in 1914 for S. S. Kresge, founder of S. S. Kresge Company. He lived here until his divorce from his first wife in 1924. Following the divorce, his wife and children continued to live in the house. After the death of Mrs. Kresge, the house was given to the Arch-Diocese of Detroit which is the current owner.

The exterior of the house is plain. The windows are large, square, and topped with a transom. There is a solarium at the west end. In the back are two carriage houses of the same general design. The residence is situated in the midst of elaborately landscaped grounds.

The interior of the house features large high-ceilinged rooms with elaborate wooden mouldings and plaster foliated scrolls on the ceilings. There are many fireplaces, including a huge one in the living room. A unique circular staircase comprising a wooden bannister supported by elaborate wrought iron balusters leads to the second floor. This floor is fully taken up by bedrooms which are uniformly large and high-ceilinged. The third floor contains the servants quarters, a large open room, and a large walk-in cedar closet.

There have been no changes made in the house since it was constructed except for such things as modernizing electric fixtures, etc. It is a large comfortable mansion, and is an excellent example of a type of home common to the Boston-Edison District.

Group II (a)  
Brick homes with decorated facades (photo #4)

The Harley E. Smith house at 1951 Chicago Boulevard is a two and one half story brick structure with a gable roof, and is notable for its use of formal Georgian architectural rhetoric on what is essentially a compactly scaled structure. The house measures approximately forty-five feet long by thirty-four feet wide and faces north. It was built in 1919, and since its construction has changed hands frequently. It is currently owned by Waldo J. Smith, a principal in the Detroit Public School System.

The front of the house features an elaborate broken pediment supported by free standing columns over the front door. The frieze in the pediment is decorated by elaborate stone dentils, a stylistic device continued over the ground floor windows and under the roof line giving unity to the entire design. The keystones above the second story windows are a combination of brick and stone. The elaborate dormers frame

(continued)

UNITED STATES DEPARTMENT OF THE INTERIOR  
NATIONAL PARK SERVICE

FOR NPS USE ONLY	
RECEIVED	APR 18 1975
DATE ENTERED	SEP 5 1975

**NATIONAL REGISTER OF HISTORIC PLACES  
INVENTORY -- NOMINATION FORM**

CONTINUATION SHEET

ITEM NUMBER 7 PAGE 3

#7. Description (continued) Supplement (continued)

oval windows. They are too large for the scale of the house, and on first impression tend to over-power the entire design. Yet, in spite of this, the total effect while somewhat pretentious does contain a good deal of charm.

Group II (b)  
Brick homes with plain facades

The William Martmer house at 1557 Longfellow is a rectangular two and one half story brick structure whose measurements are thirty-six by forty-four feet. The house was built in 1916 by Martmer who was a dentist. Following him, the house changed hands five times, and is now owned by Ronald Licht who purchased it in 1958.

The house is an excellent example of a type common to the district. The front, or south side, features a set of bay windows. The windows throughout, except for those upstairs over the porch, are three by one double hung sash. Those over the porch are one by four double hung sash. They are framed in brick, and highlighted by the use of stone which has been worked out with unusual skill.

The overall effect of this neat trim structure is one of simple comfort, and impression projected by many houses in the district.

Group III  
English Style Homes (photos 2 and 2a)

The James Couzens house at 610 Longfellow is a three story house with full basement and attic measuring seventy feet long by fifty feet wide. The house passed from James Couzens to his son Frank and then to his wife who occupied it until 1962. Mrs. Couzens remarried and moved to Grosse Point. The house was swapped in exchange for a house on LaSalle Boulevard to the Catholic Foreign Mission Society which is the present owner.

The basic exterior construction of the house is brick and stone. It has a gable roof, rectangular windows divided by stone mullions and elaborate bay windows on the south or front side of the house. There are large well developed gardens on the west sides.

The interior of the house is highlighted by elaborate carved wood panelling which is used lavishly on the ground floor in the large high ceilinged rooms. The bed rooms on the second floor are noticeably plainer than the rooms on the ground floor although they are large and airy. The third floor is taken up with a full length ballroom and three servants' bedrooms, also a trunk room and cedar closet, while the basement has one of the first semi-automatic bowling alleys in the country.

(continued)

UNITED STATES DEPARTMENT OF THE INTERIOR  
NATIONAL PARK SERVICE

FOR NPS USE ONLY

RECEIVED APR 18 1975

DATE ENTERED

SEP 5 1975

**NATIONAL REGISTER OF HISTORIC PLACES  
INVENTORY -- NOMINATION FORM**

CONTINUATION SHEET

ITEM NUMBER

7

PAGE

4

#7 Description (continued) Supplement (continued)

Group IV

Early Twentieth Century Residential Homes (photo 2)

The Horace Rackham house at 90 Edison Avenue is a two and one half story brick house facing south. It was built in 1907 and remained in the Rackham family until recently.

The house is basically a square. It is forty-two feet wide by forty feet long. There are bow windows on the sides, bay windows on the front, a hipped roof and dormers on the front. There is a large verandah on the front, and two inside brick chimneys. The windows, except for the dormers and the decorative set above the front door, are one by one double hung sash. The dormer windows are double casement, which the decorative windows are single sash.

UNITED STATES DEPARTMENT OF THE INTERIOR  
NATIONAL PARK SERVICE

**NATIONAL REGISTER OF HISTORIC PLACES  
INVENTORY -- NOMINATION FORM**

FOR NPS USE ONLY

RECEIVED

DATE ENTERED

SEP 5 1975

CONTINUATION SHEET

ITEM NUMBER 7

PAGE 7

Addendum - July 27, 1975

Boston-Edison Historic District, Detroit, Michigan, Wayne County

7. Description

There are 29 homes of a total of 929 built after 1925. The greatest number of them were built before 1930 with less than ten built after 1950.

Photographs

Enclosed are seven additional photographs of the district.

# 8 SIGNIFICANCE

PERIOD	AREAS OF SIGNIFICANCE -- CHECK AND JUSTIFY BELOW			
<input type="checkbox"/> PREHISTORIC	<input type="checkbox"/> ARCHEOLOGY-PREHISTORIC	<input type="checkbox"/> COMMUNITY PLANNING	<input type="checkbox"/> LANDSCAPE ARCHITECTURE	<input type="checkbox"/> RELIGION
<input type="checkbox"/> 1400-1499	<input type="checkbox"/> ARCHEOLOGY-HISTORIC	<input type="checkbox"/> CONSERVATION	<input type="checkbox"/> LAW	<input type="checkbox"/> SCIENCE
<input type="checkbox"/> 1500-1599	<input type="checkbox"/> AGRICULTURE	<input type="checkbox"/> ECONOMICS	<input type="checkbox"/> LITERATURE	<input type="checkbox"/> SCULPTURE
<input type="checkbox"/> 1600-1699	<input checked="" type="checkbox"/> ARCHITECTURE	<input type="checkbox"/> EDUCATION	<input type="checkbox"/> MILITARY	<input type="checkbox"/> SOCIAL/HUMANITARIAN
<input type="checkbox"/> 1700-1799	<input type="checkbox"/> ART	<input type="checkbox"/> ENGINEERING	<input type="checkbox"/> MUSIC	<input type="checkbox"/> THEATER
<input type="checkbox"/> 1800-1899	<input type="checkbox"/> COMMERCE	<input type="checkbox"/> EXPLORATION/SETTLEMENT	<input type="checkbox"/> PHILOSOPHY	<input type="checkbox"/> TRANSPORTATION
<input checked="" type="checkbox"/> 1900-	<input type="checkbox"/> COMMUNICATIONS	<input type="checkbox"/> INDUSTRY	<input type="checkbox"/> POLITICS/GOVERNMENT	<input type="checkbox"/> OTHER (SPECIFY)
		<input type="checkbox"/> INVENTION		

SPECIFIC DATES

BUILDER/ARCHITECT

STATEMENT OF SIGNIFICANCE

The Boston-Edison Historic District is significant as a large residential area of quality and substantial architecture of the first quarter of the 20th century. (A similar area is the Indian Village Historic District, Detroit, listed in the National Register.) It is also significant for the associations of a number of persons important in the industrial, religious and cultural development of Detroit and the nation in the period between 1900 and 1930.

The Boston-Edison District is one of Detroit's early developments. The part between Woodward and Hamilton was incorporated into the city in 1891; that between Hamilton and Linwood was as early as 1903 and spread west. The area between Hamilton and Twelfth was developed between 1916 and 1919, while that between Twelfth and Linwood between 1919 and 1925. By the latter date, the largest part of the construction had been finished, although a few homes were still being erected near Linwood as late as 1930.

Various factors helped shape the residential district which grew up during those years. Four of these are of particular interest for they throw light on the way of life of the times. The first factor is the construction of Henry Ford Hospital, 2799 West Grand River, nearby in 1915. This undoubtedly accounts for the large number of physicians, twenty-three, who built homes in the western part of the district.

A second factor is the lack of discriminatory regulations against Jews. As a result, a large number of Jewish families, some of them quite prominent in the affairs of Detroit, located in the area.

A third factor is the growth of extended families, corporate and individual. Three large colonies can be cited. For example, Benjamin Siegel, founder of the Benjamin Siegel Company, an important early clothing company in Detroit, lived at 150 Boston Boulevard West. He was a cousin of Jacob Siegel who lived at 151 Boston Boulevard West, and married his daughter Sophie. Jacob, apparent founder of the American Corset Company, had two sons who lived in the district. Eugene lived with him, while Joseph lived at 610 Boston Boulevard West. Another family was the Wagner family, scattered through subdivisions, which owned and operated a large baking company in Detroit. Four members of the family, John who lived at 859 Boston Boulevard, Henry Jr. who lived at 2255 Boston Boulevard, Henry Sr. who lived at 2285 Boston Boulevard and Richard who lived at 1970 Chicago, all resided within the district. A third colony is represented by the Fisher Brothers, founders of the Fisher Automotive Company, now a part of General Motors. Four of the seven brothers resided within the district. Charles lived at 670 Boston Boulevard, Edward lived at 892 Boston Boulevard, Alf J. lived at 1556 Chicago, while William lived at 111 Edison.

(continued)



# 9 MAJOR BIBLIOGRAPHICAL REFERENCES

- Boston-Edison Protective Association. "A Brief History of the Boston-Edison Area." Detroit, 1973 (typewritten)
- Burton, C. M. The City of Detroit, Michigan. Vol. V. Detroit: S. J. Clarke Publishing Company, 1922. pp. 176-179; 911-912.
- Marquis, Albert. The Book of Detroiters. Chicago: A.N. Marquis and Co., 1915, p. 127; p441
- Beautiful Homes of Detroit and Vicinity, c. 1917. Detroit News Library.

# 10 GEOGRAPHICAL DATA

UTM book w/m 9-24-75

ACREAGE OF NOMINATED PROPERTY 256

UTM REFERENCES

DA	17	32,835.0	4,694.840	AB	1,7	32,859.0	4,694.33,0
	ZONE	EASTING	NORTHING		ZONE	EASTING	NORTHING
Bc	1,7	32,631.0	4,693.30,0	BP	1,7	32,610.0	4,693.78,0
	ZONE	EASTING	NORTHING		ZONE	EASTING	NORTHING

VERBAL BOUNDARY DESCRIPTION

The eastern boundary of the Boston-Edison Historic District starts at a point at the centerline of Glynn Court and Woodward Avenue. From this point it runs south along Woodward Avenue approx. 2,000 feet to the rear property line of Edison Avenue. From there it follows the property line east approx. 8,400 feet until it meets the centerline of Linwood Avenue. From there it runs north approx. 2,000 feet to the rear property line of

LIST ALL STATES AND COUNTIES FOR PROPERTIES OVERLAPPING STATE OR COUNTY BOUNDARIES

STATE	CODE	COUNTY	CODE
STATE	CODE	COUNTY	CODE

# 11 FORM PREPARED BY

NAME / TITLE

See continuation sheet.

ORGANIZATION

DATE

STREET & NUMBER

TELEPHONE

CITY OR TOWN

STATE

# 12 STATE HISTORIC PRESERVATION OFFICER CERTIFICATION

THE EVALUATED SIGNIFICANCE OF THIS PROPERTY WITHIN THE STATE IS:

NATIONAL  STATE  LOCAL

As the designated State Historic Preservation Officer for the National Historic Preservation Act of 1966 (Public Law 89-665), I hereby nominate this property for inclusion in the National Register and certify that it has been evaluated according to the criteria and procedures set forth by the National Park Service.

FEDERAL REPRESENTATIVE SIGNATURE

*Martha M. Biglow*

TITLE State Historic Preservation Officer

DATE *April 15 '75*

FOR NPS USE ONLY

I HEREBY CERTIFY THAT THIS PROPERTY IS INCLUDED IN THE NATIONAL REGISTER

DIRECTOR, OFFICE OF ARCHEOLOGY AND HISTORIC PRESERVATION

DATE *9/5/75*

ATTEST:

*W. M. Mortensen*

DATE **SEP 4 1975**

KEEPER OF THE NATIONAL REGISTER

UNITED STATES DEPARTMENT OF THE INTERIOR  
NATIONAL PARK SERVICE

FOR NPS USE ONLY	
RECEIVED	APR 18 1975
DATE ENTERED	SEP 5 1975

**NATIONAL REGISTER OF HISTORIC PLACES  
INVENTORY -- NOMINATION FORM**

CONTINUATION SHEET

ITEM NUMBER 8&10 PAGE 5

#8. Significance (continued)

A fourth factor which helped to shape the composition of the area's inhabitants was a tendency for employees to cluster around their employer. While several examples could be cited, the clearest is that posed by the employees of the S. S. Kresge Company. Mr. Kresge lived at 70 Boston Boulevard West. No less than six other homes were built by company employees in the area.

Between the years 1900 and 1925, an impressive number of influential Detroiters called this area home. S. S. Kresge, founder of the S. S. Kresge Company, lived at 70 Boston Boulevard West from 1914 to 1924. C. M. Burton, one of the founders of the Detroit Historical Society, and donor of the Burton Historical Collection to the Detroit Public Library, lived at 121 Boston Boulevard West. Rabbi Leo Franklin, organizer of the United Jewish Charities, editor of the Jewish American and long time rabbi at Temple Beth El lived at 26 Edison Avenue. Henry Ford lived at 140 Edison from 1908 to 1915. Joseph Moynihan, an influential Wayne County Circuit Judge and later Michigan Supreme Court Justice lived at 2525 Chicago Boulevard. James Couzens, secretary-treasurer of the Ford Motor Company, first non-partisan mayor of Detroit and later U.S. Senator from Michigan lived at 610 Longfellow. William Strickland, vice-president of General Motors and chief engineer of the Cadillac division lived at 9450 LaSalle. J. L. Webber, nephew of J. L. Hudson and manager along with his brother of the Hudson's Department Store chain from 1912 to 1953 lived at 1477 Edison Avenue. Richard Whiting, composer of such songs as "Till We Meet Again" and "Beyond the Blue Horizon" lived at 2418 Edison Avenue.

The Boston-Edison Historic District is a 36 block area of homes in Detroit, the majority of which were built between the years 1905 and 1925 and remain unchanged today. While the basic architectural style is eclectic, a uniformity in roof line, scale, and in set back from the street, as well as the presence of wide tree lined streets establishes an ambience of relaxed suburban living of an earlier age. An impressive number of Detroiters, ranging from Henry Ford to S. S. Kresge to four of the seven Fisher Brothers resided in the area. Two significant known architects who designed residences in the district are Albert Kahn and Smith, Hynchman and Grylls. It remains today an area whose atmosphere and environment is reminiscent of an earlier age.

#10 Verbal Boundary Description (continued) *East*

Boston Blvd. It follows the property line west approx. 5,600 feet to Hamilton Avenue. It follows the centerline of Hamilton Avenue north approx. 200 feet to the intersection of Glynn Court. It runs west along the centerline of Glynn Court approx. 2,800 feet to the beginning of the district. *East*

*Lebovich*  
4-75  
*Lebovich*  
4-75

UNITED STATES DEPARTMENT OF THE INTERIOR  
NATIONAL PARK SERVICE

FOR NPS USE ONLY	
RECEIVED	APR 18 1975
DATE ENTERED	SEP 5 1975

**NATIONAL REGISTER OF HISTORIC PLACES  
INVENTORY -- NOMINATION FORM**

CONTINUATION SHEET

ITEM NUMBER 11 PAGE 6

#11. Form prepared by

Floyd Patterson, Historic Site Specialist  
Michigan History Division Nov. 27, 1973  
208 N. Capitol  
Lansing, Michigan 48918 026

Eileen Kosnick  
Boston-Edison Protective Association November 1973  
605 Chicago Road  
Detroit, Michigan 48202 026

Amy Hecker, Historic Preservation Coordinator  
Michigan History Division March, 1975  
Baker-Olin Complex-West, 3rd floor  
3423 N. Logan  
Lansing, Michigan 48918 026

75000965

Property Boston-Edison Historic District

*Maple*

State Michigan

Working Number 4.18.75.698

**TECHNICAL**

Photos 416 *mostly incorrect*  
Maps 2 USGS *7 continuation sheets (7, 8, 10, 11)*

**CONTROL**

*OK* *flam* *4.21.75*

**HISTORIAN**

**ARCHITECTURAL HISTORIAN**

*More significant as wealthy residential settlement of important Detroiters,*

*Accept*  
*Lebovich*  
*4-23-75*

**ARCHEOLOGIST**

**OTHER**

*For 300 bldgs, 8 photos is a bit scary - we should have a better sampling - more streetscapes near western boundaries, Voigt Park, highway, etc. Also 90 bldg. after 1925*

*for the coming*  
*talked w/ Amy Hecker*  
*5/1/75*  
*Eventual*  
*ACCEPT*  
*8/4/75*  
*4/28/75*

**HAER**

Inventory \_\_\_\_\_  
Review \_\_\_\_\_

**REVIEW UNIT CHIEF**

*Accept*  
*Colz*  
*9-2-75*

**BRANCH CHIEF**

*accept*  
*Aug*  
*9-3-75*

**KEEPER**

*[Signature]*  
SEP 4 1975

National Register Write-up \_\_\_\_\_ Send-back \_\_\_\_\_  
Federal Register Entry 11-4-75 Re-submit \_\_\_\_\_

Entered SEP 5 1975

*District*  
INT 2106-74



UNITED STATES DEPARTMENT OF THE INTERIOR  
NATIONAL PARK SERVICE

NATIONAL REGISTER OF HISTORIC PLACES  
PROPERTY PHOTOGRAPH FORM

FOR NPS USE ONLY

RECEIVED APR 18 1975

DATE ENTERED

SEP 5 1975

SEE INSTRUCTIONS IN *HOW TO COMPLETE NATIONAL REGISTER FORMS*  
TYPE ALL ENTRIES ENCLOSE WITH PHOTOGRAPH

**1 NAME**

HISTORIC

AND/OR COMMON

Boston-Edison Historic District

**2 LOCATION**

CITY, TOWN

Detroit

\_\_\_\_ VICINITY OF

COUNTY Wayne

STATE Michigan

**3 PHOTO REFERENCE**

PHOTO CREDIT Boston-Edison Protective ASSoc.

DATE OF PHOTO December, 1973

NEGATIVE FILED AT Mrs. Eileen Kosnick, 605 Chicago Blvd., Detroit 48202

**4 IDENTIFICATION**

DESCRIBE VIEW, DIRECTION, ETC. IF DISTRICT, GIVE BUILDING NAME & STREET

S.S. Kresge House, 70 Boston Blvd. W.

View of south (front) facade.

PHOTO NO. 1

PROPERTY OF THE NATIONAL REGISTER



UNITED STATES DEPARTMENT OF THE INTERIOR  
NATIONAL PARK SERVICE

NATIONAL REGISTER OF HISTORIC PLACES  
PROPERTY PHOTOGRAPH FORM

FOR NPS USE ONLY

RECEIVED

APR 18 1975

DATE ENTERED

SEP 5 1975

SEE INSTRUCTIONS IN *HOW TO COMPLETE NATIONAL REGISTER FORMS*  
TYPE ALL ENTRIES -- ENCLOSE WITH PHOTOGRAPH

**1** NAME

HISTORIC

Boston-Edison Historic District

AND/OR COMMON

Boston Edison Historic District

**2** LOCATION

CITY, TOWN

Detroit

\_\_\_ VICINITY OF

COUNTY Wayne

STATE Michigan

**3** PHOTO REFERENCE

PHOTO CREDIT Boston-Edison Protective Assoc.

DATE OF PHOTO December, 1973

NEGATIVE FILED AT Mrs. Eileen Kosnik, 605 Chicago Blyd., Detroit 48202

**4** IDENTIFICATION

DESCRIBE VIEW, DIRECTION, ETC. IF DISTRICT, GIVE BUILDING NAME & STREET

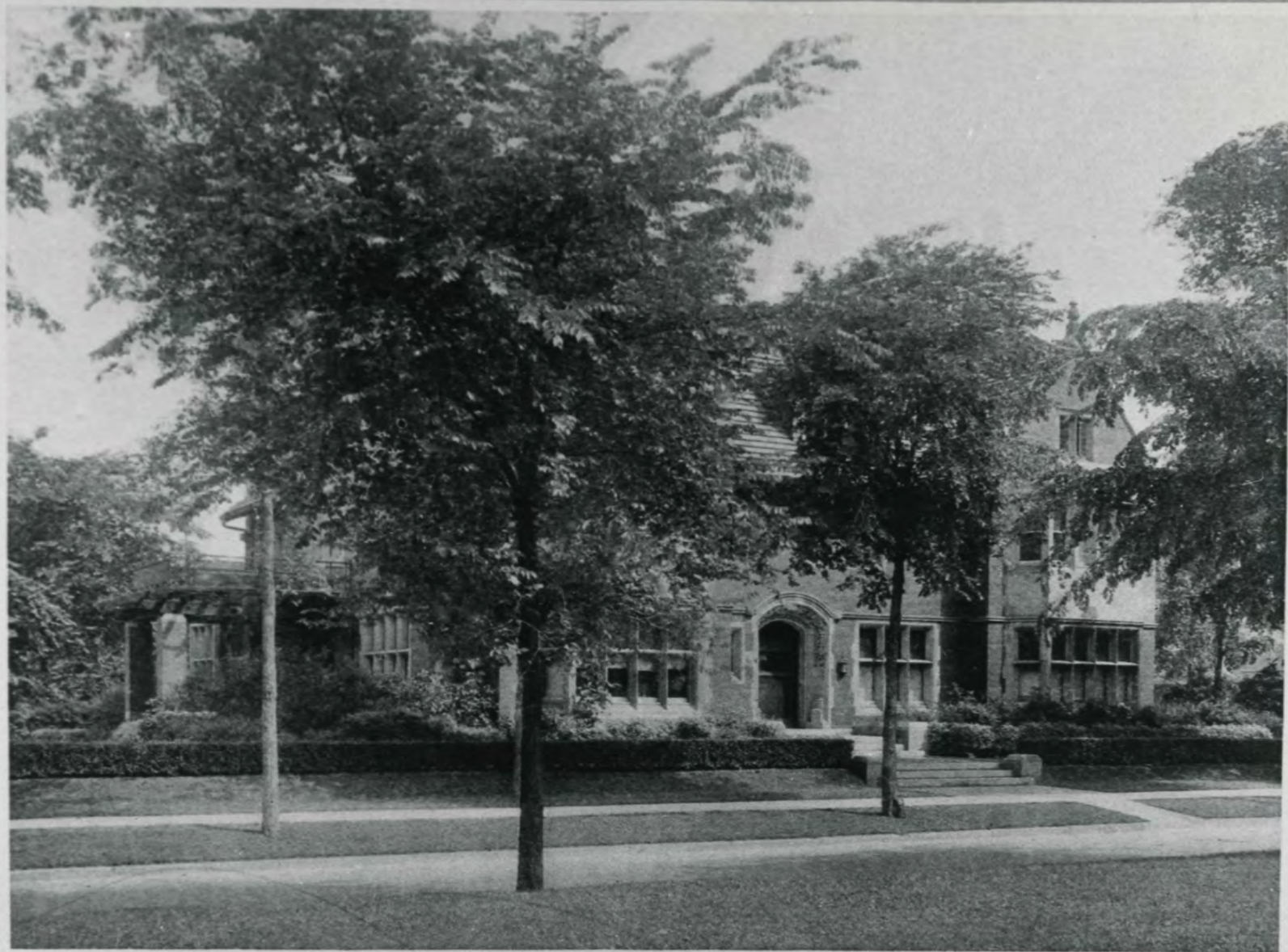
Horace Rackham House, 90 Edison Avenue

View of the south (front) facade.

PHOTO NO. 2

PROPERTY OF THE NATIONAL REGISTER





*Residence of James Couzens*

*94 Longfellow Avenue*

UNITED STATES DEPARTMENT OF THE INTERIOR  
NATIONAL PARK SERVICE

NATIONAL REGISTER OF HISTORIC PLACES  
PROPERTY PHOTOGRAPH FORM

FOR NPS USE ONLY

RECEIVED

APR 18 1975

DATE ENTERED

SEP 5 1975

SEE INSTRUCTIONS IN HOW TO COMPLETE NATIONAL REGISTER FORMS  
TYPE ALL ENTRIES ENCLOSE WITH PHOTOGRAPH

**1 NAME**

HISTORIC

AND/OR COMMON

Boston-Edison Historic District

**2 LOCATION**

CITY, TOWN

Detroit

\_\_\_\_VICINITY OF

COUNTY

Wayne

STATE

Michigan

**3 PHOTO REFERENCE**

PHOTO CREDIT

copy from Beautiful Homes of Detroit  
Detroit News Library

DATE OF PHOTO

c. 1917

NEGATIVE FILED AT

Mrs. Eileen Kosnick, 605 Chicago Blvd., Detroit 48202

**4 IDENTIFICATION**

DESCRIBE VIEW, DIRECTION, ETC. IF DISTRICT. GIVE BUILDING NAME & STREET  
James Couzens House, 610 Longfellow  
South (main) facade.

PHOTO NO. 2a

PROPERTY OF THE NATIONAL REGISTER



NO LEFT TURN

ONE WAY

NO LEFT TURN

Form No. 10-301a  
(Rev. 10-74)

UNITED STATES DEPARTMENT OF THE INTERIOR  
NATIONAL PARK SERVICE

**NATIONAL REGISTER OF HISTORIC PLACES  
PROPERTY PHOTOGRAPH FORM**

FOR NPS USE ONLY

RECEIVED APR 18 1975

DATE ENTERED

SEP 5 1975

SEE INSTRUCTIONS IN *HOW TO COMPLETE NATIONAL REGISTER FORMS*  
TYPE ALL ENTRIES ENCLOSE WITH PHOTOGRAPH

**1 NAME**

HISTORIC Boston-Edison Historic District

AND/OR COMMON

Boston-Edison Historic District

**2 LOCATION**

CITY, TOWN Detroit VICINITY OF COUNTY Wayne STATE Michigan

**3 PHOTO REFERENCE**

PHOTO CREDIT Boston-Edison Protective Assoc. DATE OF PHOTO DEcember, 1973

NEGATIVE FILED AT Mrs. Eileen Kosnick, 605 Chicago Blvd., Detroit 48202

**4 IDENTIFICATION**

DESCRIBE VIEW, DIRECTION, ETC. IF DISTRICT. GIVE BUILDING NAME & STREET

James Couzens House, 610 Longfellow.

Shows southwest corner of the house.

PHOTO NO. 3

PROPERTY OF THE NATIONAL REGISTER

Boston-Edison Hist. Dist., Detroit  
610 Longfellow  
12/73



UNITED STATES DEPARTMENT OF THE INTERIOR  
NATIONAL PARK SERVICE

**NATIONAL REGISTER OF HISTORIC PLACES  
PROPERTY PHOTOGRAPH FORM**

FOR NPS USE ONLY

RECEIVED

APR 18 1975

DATE ENTERED

SEP 5 1975

SEE INSTRUCTIONS IN *HOW TO COMPLETE NATIONAL REGISTER FORMS*  
TYPE ALL ENTRIES ENCLOSE WITH PHOTOGRAPH

**1 NAME**

HISTORIC

AND/OR COMMON

Boston-Edison Historic District

**2 LOCATION**

CITY, TOWN

Detroit

—VICINITY OF

COUNTY

Wayne

STATE

Michigan

**3 PHOTO REFERENCE**

PHOTO CREDIT Boston-Edison Protective Assoc.

DATE OF PHOTO December, 1973

NEGATIVE FILED AT Mrs. Eileen Kosnick, 605 Chicago Blvd., Detroit 48202

**4 IDENTIFICATION**

DESCRIBE VIEW, DIRECTION, ETC. IF DISTRICT, GIVE BUILDING NAME & STREET

Waldo J. Smith House, 1951 Chicago Blvd.

View of north (main) facade.

PHOTO NO. 4

PROPERTY OF THE NATIONAL REGISTER



Boston-Edison Historic District, Detroit  
2266 Boston Blvd.  
12/73

Form No. 10-301a  
(Rev. 10-7-73)

UNITED STATES DEPARTMENT OF THE INTERIOR  
NATIONAL PARK SERVICE

**NATIONAL REGISTER OF HISTORIC PLACES  
PROPERTY PHOTOGRAPH FORM**

FOR NPS USE ONLY

RECEIVED APR 18 1975

DATE ENTERED SEP 5 1975

SEE INSTRUCTIONS IN *HOW TO COMPLETE NATIONAL REGISTER FORMS*  
TYPE ALL ENTRIES ENCLOSE WITH PHOTOGRAPH

**1 NAME**

HISTORIC

AND/OR COMMON

Boston-Edison Historic District

**2 LOCATION**

CITY, TOWN

Detroit

\_\_\_ VICINITY OF

COUNTY Wayne

STATE Michigan

**3 PHOTO REFERENCE**

PHOTO CREDIT

Boston-Edison Protective Assoc.

DATE OF PHOTO December, 1973

NEGATIVE FILED AT Mrs. Eileen Kosnick, 605 Chicago Blvd., Detroit 48202

**4 IDENTIFICATION**

DESCRIBE VIEW, DIRECTION, ETC. IF DISTRICT. GIVE BUILDING NAME & STREET

2266 Boston Boulevard

PHOTO NO. 5

**PROPERTY OF THE NATIONAL REGISTER**





UNITED STATES DEPARTMENT OF THE INTERIOR  
NATIONAL PARK SERVICE

**NATIONAL REGISTER OF HISTORIC PLACES  
PROPERTY PHOTOGRAPH FORM**

FOR NPS USE ONLY

RECEIVED APR 18 1975

DATE ENTERED

SEP 5 1975

SEE INSTRUCTIONS IN *HOW TO COMPLETE NATIONAL REGISTER FORMS*  
TYPE ALL ENTRIES ENCLOSE WITH PHOTOGRAPH

**1 NAME**

HISTORIC

AND/OR COMMON Boston-Edison Historic District

**2 LOCATION**

CITY, TOWN

Detroit

\_\_\_\_VICINITY OF

COUNTY

Wayne

STATE

Michigan

**3 PHOTO REFERENCE**

PHOTO CREDIT

Boston-Edison Protective Assoc.

DATE OF PHOTO

November, 1973

NEGATIVE FILED AT

Mrs. Eileen Kosnick, 605 Chicago Blvd., Detroit 48202

**4 IDENTIFICATION**

DESCRIBE VIEW, DIRECTION, ETC. IF DISTRICT, GIVE BUILDING NAME & STREET

General view looking west toward 3rd Street.  
Chicago Blvd. between 2nd and 3rd.

PHOTO NO.

6

*2nd Avenue*

PROPERTY OF THE NATIONAL REGISTER



UNITED STATES DEPARTMENT OF THE INTERIOR  
NATIONAL PARK SERVICE

**NATIONAL REGISTER OF HISTORIC PLACES  
PROPERTY PHOTOGRAPH FORM**

FOR NPS USE ONLY

RECEIVED APR 18 1975

DATE ENTERED

SEP 5 1975

SEE INSTRUCTIONS IN *HOW TO COMPLETE NATIONAL REGISTER FORMS*  
TYPE ALL ENTRIES ENCLOSE WITH PHOTOGRAPH

**1 NAME**

HISTORIC

AND/OR COMMON

Boston-Edison Historic District

**2 LOCATION**

CITY, TOWN

Detroit

\_\_\_\_VICINITY OF

COUNTY

Wayne

STATE

Michigan

**3 PHOTO REFERENCE**

PHOTO CREDIT

Boston-Edison Protective ASsoc.

DATE OF PHOTO

December, 1973

NEGATIVE FILED AT

Mrs. Eileen Kosnick, 605 Chicago Blvd., Detroit 48202

**4 IDENTIFICATION**

DESCRIBE VIEW, DIRECTION, ETC. IF DISTRICT, GIVE BUILDING NAME & STREET

PHOTO NO.

7

Streetscape of Chicago Blvd. looking east toward Woodward Ave.

PROPERTY OF THE NATIONAL REGISTER



UNITED STATES DEPARTMENT OF THE INTERIOR  
NATIONAL PARK SERVICE

**NATIONAL REGISTER OF HISTORIC PLACES  
PROPERTY PHOTOGRAPH FORM**

FOR NPS USE ONLY

RECEIVED APR 18 1975

DATE ENTERED

SEP 5 1975

SEE INSTRUCTIONS IN *HOW TO COMPLETE NATIONAL REGISTER FORMS*  
TYPE ALL ENTRIES ENCLOSE WITH PHOTOGRAPH

**1 NAME**

HISTORIC

AND/OR COMMON

Boston-Edison Historic District

**2 LOCATION**

CITY, TOWN

Detroit

—VICINITY OF

COUNTY

Wayne

STATE

Michigan

**3 PHOTO REFERENCE**

PHOTO CREDIT

Boston-Edison Protective Assoc.

DATE OF PHOTO

December, 1973

NEGATIVE FILED AT

Mrs. Eileen Kosnick, 605 Chicago Blvd., Detroit 48202

**4 IDENTIFICATION**

DESCRIBE VIEW, DIRECTION, ETC. IF DISTRICT, GIVE BUILDING NAME & STREET

Streetscape of Boston Blvd. looking west toward  
Woodward Wilson and Twelfth.

PHOTO NO. 8

PROPERTY OF THE NATIONAL REGISTER



UNITED STATES DEPARTMENT OF THE INTERIOR  
NATIONAL PARK SERVICE

**NATIONAL REGISTER OF HISTORIC PLACES  
PROPERTY PHOTOGRAPH FORM**

FOR NPS USE ONLY

RECEIVED

DATE ENTERED

SEP 5 1975

SEE INSTRUCTIONS IN *HOW TO COMPLETE NATIONAL REGISTER FORMS*  
TYPE ALL ENTRIES ENCLOSE WITH PHOTOGRAPH

**1 NAME**

HISTORIC Boston-Edison Historic District

AND/OR COMMON same

**2 LOCATION**

CITY, TOWN Detroit VICINITY OF COUNTY Wayne STATE Michigan

**3 PHOTO REFERENCE**

PHOTO CREDIT Eileen Kosnick DATE OF PHOTO April, 1975

NEGATIVE FILED AT Eileen Kosnick  
Michigan History Division  
Michigan Department of State, Lansing, Michigan 48918

**4 IDENTIFICATION**

DESCRIBE VIEW, DIRECTION, ETC. IF DISTRICT, GIVE BUILDING NAME & STREET

PHOTO NO.

Looking West to John Lodge Expressway from  
Hamilton at Chicago.

9

PROPERTY OF THE NATIONAL REGISTER





UNITED STATES DEPARTMENT OF THE INTERIOR  
NATIONAL PARK SERVICE

**NATIONAL REGISTER OF HISTORIC PLACES  
PROPERTY PHOTOGRAPH FORM**

FOR NPS USE ONLY

RECEIVED

SEP 5 1975

DATE ENTERED

SEE INSTRUCTIONS IN *HOW TO COMPLETE NATIONAL REGISTER FORMS*  
TYPE ALL ENTRIES ENCLOSE WITH PHOTOGRAPH

**1 NAME**

HISTORIC Boston-Edison Historic District

AND/OR COMMON same

**2 LOCATION**

CITY, TOWN Detroit VICINITY OF COUNTY Wayne STATE Michigan

**3 PHOTO REFERENCE**

PHOTO CREDIT Eileen Kosnick DATE OF PHOTO May, 1975

NEGATIVE FILED AT Eileen Kosnick  
Michigan History Division MI 48202  
Michigan Department of State, Lansing, Michigan 48918

**4 IDENTIFICATION**

DESCRIBE VIEW, DIRECTION, ETC. IF DISTRICT, GIVE BUILDING NAME & STREET

Lasalle looking southeast from Chicago

PHOTO NO.

10

PROPERTY OF THE NATIONAL REGISTER



UNITED STATES DEPARTMENT OF THE INTERIOR  
NATIONAL PARK SERVICE

**NATIONAL REGISTER OF HISTORIC PLACES  
PROPERTY PHOTOGRAPH FORM**

FOR NPS USE ONLY

RECEIVED

DATE ENTERED

SEP 5 1975

SEE INSTRUCTIONS IN *HOW TO COMPLETE NATIONAL REGISTER FORMS*  
TYPE ALL ENTRIES ENCLOSE WITH PHOTOGRAPH

**1 NAME**

HISTORIC

Boston-Edison Historic District

AND/OR COMMON

same

**2 LOCATION**

CITY, TOWN

Detroit

\_\_\_\_VICINITY OF

COUNTY Wayne

STATE Michigan

**3 PHOTO REFERENCE**

PHOTO CREDIT

Eileen Kosnick

DATE OF PHOTO

May 1975

NEGATIVE FILED AT

Michigan History Division

Michigan Department of State, Lansing, Michigan 48918

**4 IDENTIFICATION**

DESCRIBE VIEW, DIRECTION, ETC. IF DISTRICT, GIVE BUILDING NAME & STREET

Linwood at Chicago looking southwest  
(Sacred Heart Academy)

PHOTO NO.

11

**Newport**  
*Alive with  
pleasure!*

**SHELL**

TOP VALUE

RILEY'S ELECTRONIC  
**TUNE UP**  
AIR-COND.  
WHEEL  
**ALIGN. and BAL.**  
ALTER GEN. START CARB. EXHAUST...  
TIRES BATTERIES ACC. BRAKES  
ROAD SERVICE TOWING

ICE

**SCIULLO CLEANERS**  
TAILORING  
CLOTHIERS

LIQUOR

IMPERIAL QUALITY  
QUALITY NUMBER

CAR WASH

Chic

UNITED STATES DEPARTMENT OF THE INTERIOR  
NATIONAL PARK SERVICE

**NATIONAL REGISTER OF HISTORIC PLACES  
PROPERTY PHOTOGRAPH FORM**

FOR NPS USE ONLY

RECEIVED

DATE ENTERED **SEP 5 1975**

SEE INSTRUCTIONS IN *HOW TO COMPLETE NATIONAL REGISTER FORMS*  
TYPE ALL ENTRIES ENCLOSE WITH PHOTOGRAPH

**1 NAME**

HISTORIC

Boston-Edison Historic District

AND/OR COMMON **same**

**2 LOCATION**

CITY, TOWN

Detroit

\_\_\_\_VICINITY OF

COUNTY **Wayne**

STATE **Michigan**

**3 PHOTO REFERENCE**

PHOTO CREDIT **Eileen Kosnick**

DATE OF PHOTO **May 1975**

NEGATIVE FILED AT

**Michigan History Division**  
**Michigan Department of State, Lansing, Michigan 48918**

**4 IDENTIFICATION**

DESCRIBE VIEW, DIRECTION, ETC. IF DISTRICT, GIVE BUILDING NAME & STREET

**Linwood at Chicago looking northwest**  
**(gas station and stores)**

PHOTO NO.

**12**

**PROPERTY OF THE NATIONAL REGISTER**



UNITED STATES DEPARTMENT OF THE INTERIOR  
NATIONAL PARK SERVICE

**NATIONAL REGISTER OF HISTORIC PLACES  
PROPERTY PHOTOGRAPH FORM**

FOR NPS USE ONLY

RECEIVED

DATE ENTERED SEP 5 1975

SEE INSTRUCTIONS IN *HOW TO COMPLETE NATIONAL REGISTER FORMS*  
TYPE ALL ENTRIES ENCLOSE WITH PHOTOGRAPH

**1 NAME**

HISTORIC Boston-Edison Historic District

AND/OR COMMON same

**2 LOCATION**

CITY, TOWN Detroit VICINITY OF COUNTY Wayne STATE Michigan

**3 PHOTO REFERENCE**

PHOTO CREDIT Eileen Kosnick DATE OF PHOTO May 1975  
NEGATIVE FILED AT Michigan History Division  
Michigan Department of State, Lansing, Michigan 48918

**4 IDENTIFICATION**

DESCRIBE VIEW, DIRECTION, ETC. IF DISTRICT. GIVE BUILDING NAME & STREET

2300 block of Longfellow looking northeast  
from Lasalle

PHOTO NO.  
13

PROPERTY OF THE NATIONAL REGISTER





TO  
NORTHBOUND  
JOHN C. LODGE  
FREEWAY  
←

UNITED STATES DEPARTMENT OF THE INTERIOR  
NATIONAL PARK SERVICE

**NATIONAL REGISTER OF HISTORIC PLACES  
PROPERTY PHOTOGRAPH FORM**

FOR NPS USE ONLY
RECEIVED
DATE ENTERED SEP 5 1975

SEE INSTRUCTIONS IN *HOW TO COMPLETE NATIONAL REGISTER FORMS*  
TYPE ALL ENTRIES ENCLOSE WITH PHOTOGRAPH

**1 NAME**

HISTORIC

Boston-Edison Historic District

AND/OR COMMON

same

**2 LOCATION**

CITY, TOWN

Detroit

\_\_\_ VICINITY OF

COUNTY

Wayne

STATE

Michigan

**3 PHOTO REFERENCE**

PHOTO CREDIT

Eileen Kosnick

DATE OF PHOTO

May 1975

NEGATIVE FILED AT

Michigan History Division

Michigan Department of State, Lansing, Michigan 48918

**4 IDENTIFICATION**

DESCRIBE VIEW, DIRECTION, ETC. IF DISTRICT. GIVE BUILDING NAME & STREET

John Lodge Expressway at Chicago and Service Drive  
looking northeast toward Boston.

PHOTO NO.

14

PROPERTY OF THE NATIONAL REGISTER



UNITED STATES DEPARTMENT OF THE INTERIOR  
NATIONAL PARK SERVICE

NATIONAL REGISTER OF HISTORIC PLACES  
PROPERTY PHOTOGRAPH FORM

FOR NPS USE ONLY

RECEIVED

DATE ENTERED

SEP 5 1975

SEE INSTRUCTIONS IN *HOW TO COMPLETE NATIONAL REGISTER FORMS*  
TYPE ALL ENTRIES ENCLOSE WITH PHOTOGRAPH

**1** NAME

HISTORIC

Boston-Edison Historic District

AND/OR COMMON

same

**2** LOCATION

CITY, TOWN

Detroit

\_\_\_VICINITY OF

COUNTY Wayne

STATE Michigan

**3** PHOTO REFERENCE

PHOTO CREDIT

Eileen Kosnick

DATE OF PHOTO

May 1975

NEGATIVE FILED AT

Eileen Kosnick  
Michigan History Division  
Michigan Department of State, Lansing, Michigan 48918

**4** IDENTIFICATION

DESCRIBE VIEW, DIRECTION, ETC. IF DISTRICT, GIVE BUILDING NAME & STREET

Voigt Park looking east to Longfellow.

PHOTO NO.

15

PROPERTY OF THE NATIONAL REGISTER

UNITED STATES DEPARTMENT OF THE INTERIOR  
NATIONAL PARK SERVICE

**NATIONAL REGISTER OF HISTORIC PLACES  
PROPERTY MAP FORM**

FOR NPS USE ONLY

RECEIVED APR 18 1975

SEP 5 1975

DATE ENTERED

SEE INSTRUCTIONS IN *HOW TO COMPLETE NATIONAL REGISTER FORMS*  
TYPE ALL ENTRIES -- ENCLOSE WITH MAP

**1 NAME**

HISTORIC Boston-Edison Historic District

AND/OR COMMON Boston-Edison Historic District

**2 LOCATION**

CITY, TOWN Detroit VICINITY OF COUNTY Wayne STATE Michigan

**3 MAP REFERENCE**

SOURCE U.S.G.S. Detroit Quadrangle, Michigan-Ontario, 7.5 Minute series

SCALE 1:24000 DATE 1968

**4 REQUIREMENTS**

TO BE INCLUDED ON ALL MAPS

1. PROPERTY BOUNDARIES
2. NORTH ARROW
3. UTM REFERENCES (point C)

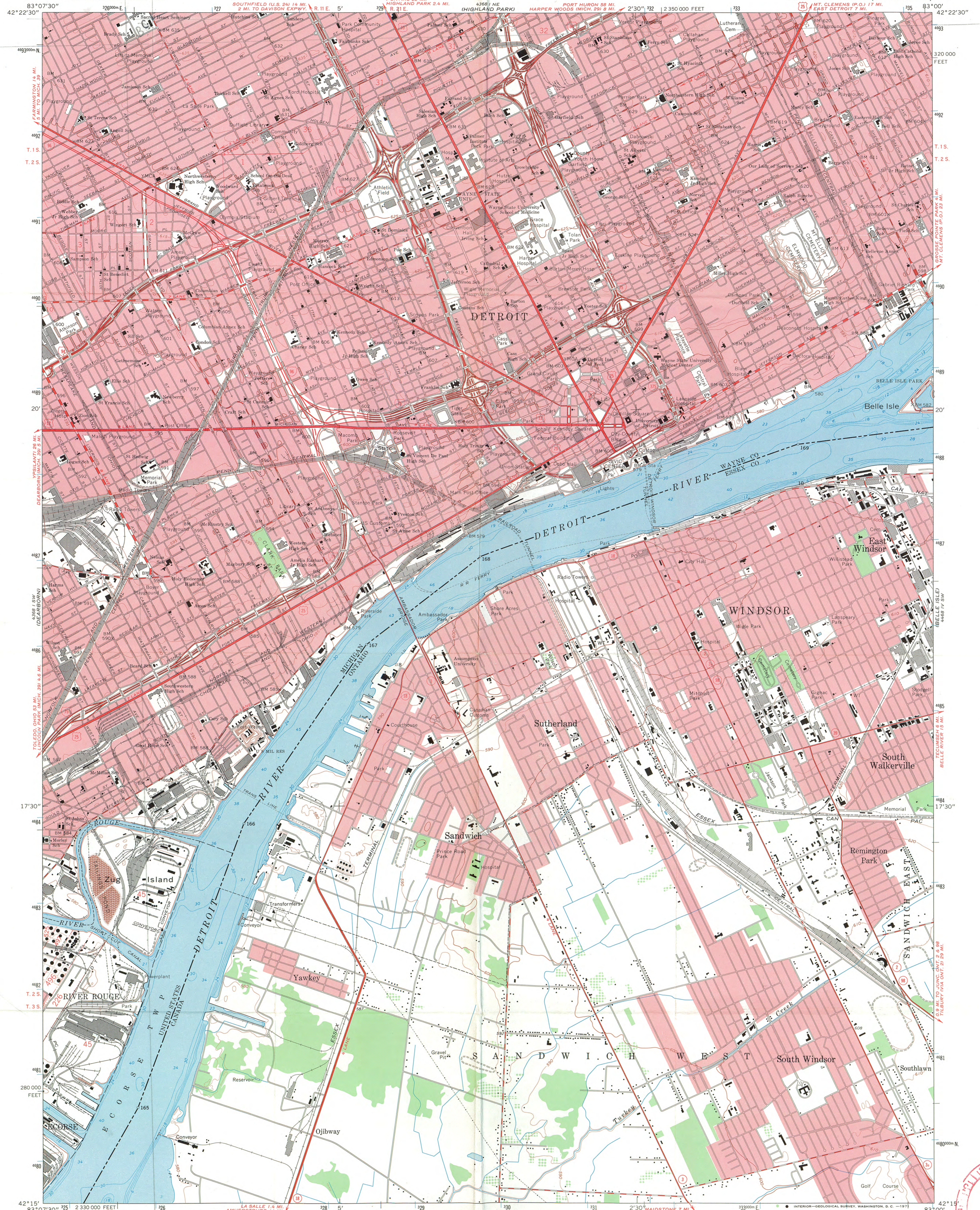
BOSTON-EDISON,  
DETROIT  
WAYNE CO.

UNITED STATES  
DEPARTMENT OF THE INTERIOR  
GEOLOGICAL SURVEY

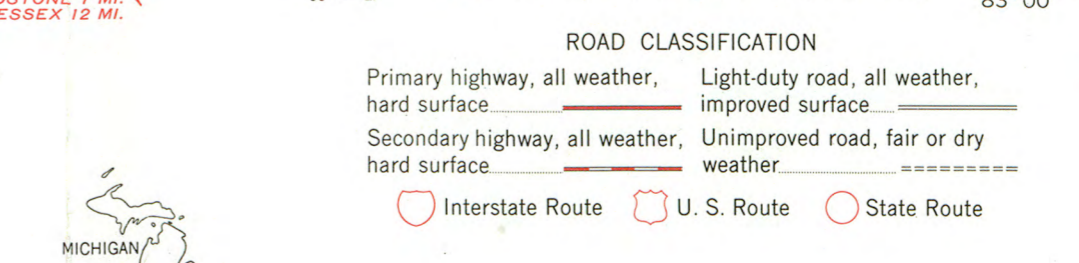
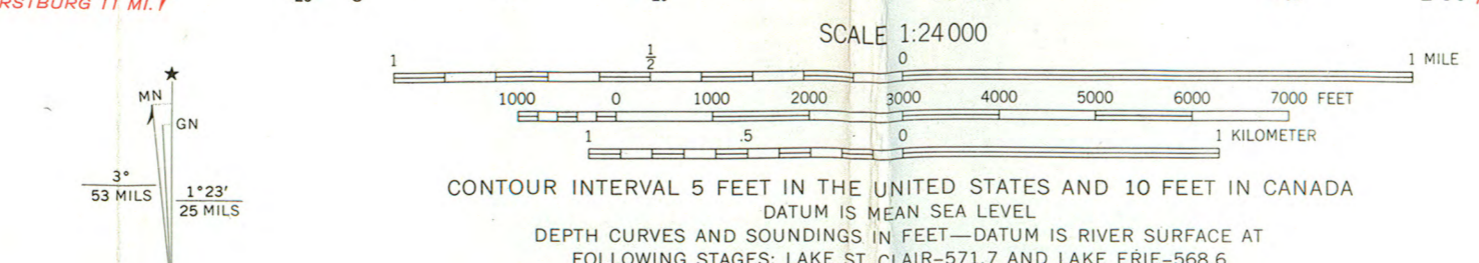
DETROIT QUADRANGLE  
MICHIGAN-ONTARIO  
7.5 MINUTE SERIES (TOPOGRAPHIC)

88° 14' W  
GROSSE POINT

C 17/326 310/4693300



Mapped, edited, and published by the Geological Survey in cooperation with State of Michigan agencies  
Control by USGS, USC&GS, U. S. Lake Survey, and City of Detroit  
Planimetry by photogrammetric methods from aerial photographs  
Topography by planimetric surveys 1938. Revised from aerial photographs taken 1966-67. Field checked 1968  
Canadian portion copied in part from Windsor quadrangle (1:25 000) 1960, Army Survey Establishment, R. C. E.  
Selected hydrographic data compiled from U. S. Lake Survey Charts 41 and 412 (1966). This information is not intended for navigational purposes  
Polyconic projection. 1927 North American datum  
10,000-foot grid based on Michigan coordinate system, south zone  
1000-meter Universal Transverse Mercator grid ticks, zone 17, shown in blue  
Red tint indicates areas in which only landmark buildings are shown



DETROIT, MICH.-ONT.  
N4215-W8300/7.5  
1968  
AMS 4368 1 SE-SERIES V882



370

UNITED STATES DEPARTMENT OF THE INTERIOR  
NATIONAL PARK SERVICE

**NATIONAL REGISTER OF HISTORIC PLACES  
PROPERTY MAP FORM**

FOR NPS USE ONLY

RECEIVED APR 18 1975

DATE ENTERED SEP 5 1975

SEE INSTRUCTIONS IN *HOW TO COMPLETE NATIONAL REGISTER FORMS*  
TYPE ALL ENTRIES -- ENCLOSE WITH MAP

**1 NAME**

HISTORIC

AND/OR COMMON Boston-Edison Historic District

**2 LOCATION**

CITY, TOWN Detroit VICINITY OF COUNTY Wayne STATE Michigan

**3 MAP REFERENCE**

SOURCE U.S.G.S. Highland Park Quadrangle, Michigan; 7.5 minute series

SCALE 1:24000 DATE 1968

**4 REQUIREMENTS**

TO BE INCLUDED ON ALL MAPS

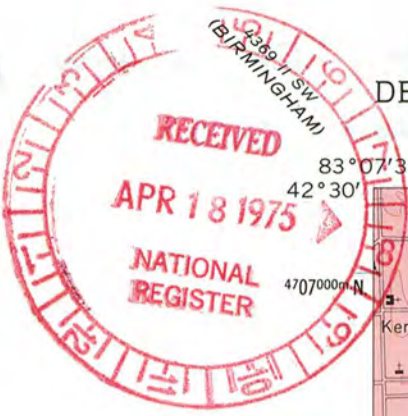
1. PROPERTY BOUNDARIES
2. NORTH ARROW
3. UTM REFERENCES (points A, B, D)

BOSTON - EDISON HIST. DIST.

Detroit, Mich.

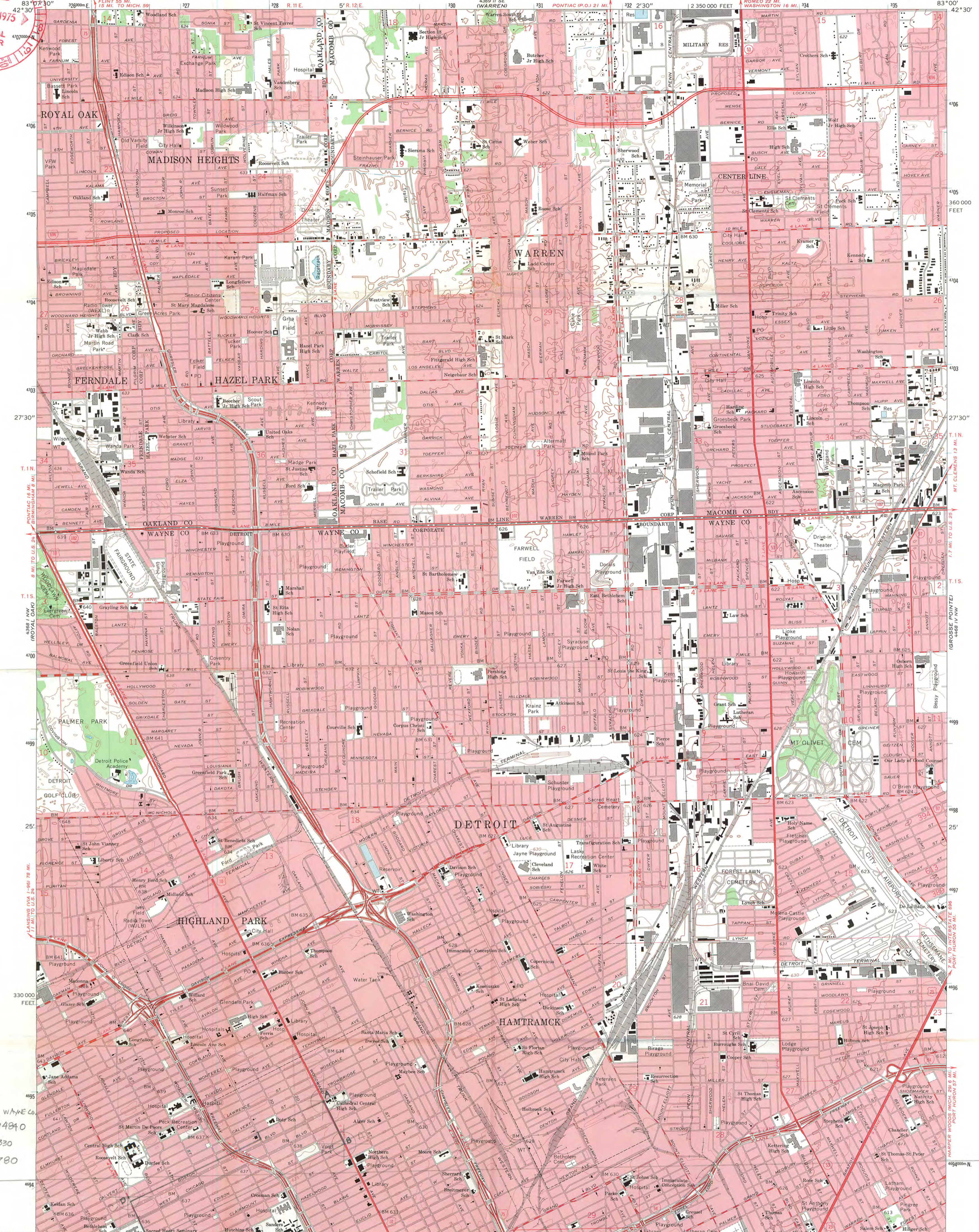
Wayne Co.





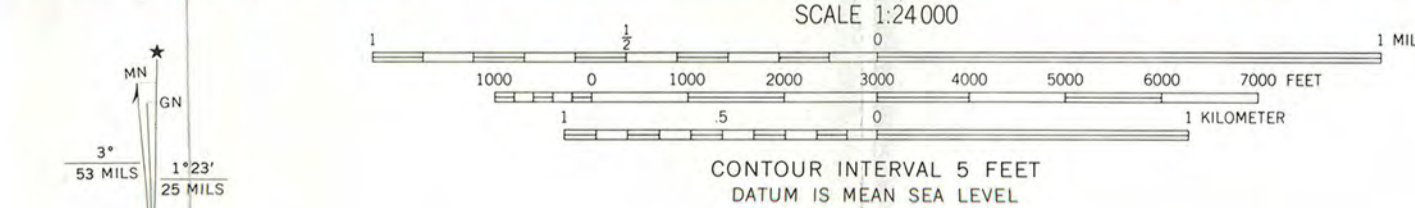
UNITED STATES DEPARTMENT OF THE INTERIOR GEOLOGICAL SURVEY

HIGHLAND PARK QUADRANGLE MICHIGAN 7.5 MINUTE SERIES (TOPOGRAPHIC)



BOSTON-EDISON HISTORIC DISTRICT, WAYNE CO  
A 17 328350 4694890  
B 17 328590 4694330  
D 17 326100 4693780

Mapped, edited, and published by the Geological Survey in cooperation with State of Michigan agencies  
Control by USGS, USC&GS, and City of Detroit  
Planimetry by photogrammetric methods from aerial photographs  
Topography by planetable surveys 1938. Revised from aerial photographs taken 1967. Field checked 1968  
Polyconic projection. 1927 North American datum  
10,000-foot grid based on Michigan coordinate system, south zone  
1000-meter Universal Transverse Mercator grid ticks, zone 17, shown in blue  
Red tint indicates areas in which only landmark buildings are shown



ROAD CLASSIFICATION

Primary highway, all weather, hard surface	Light-duty road, all weather, improved surface
Secondary highway, all weather, hard surface	Unimproved road, fair or dry weather
Interstate Route	U. S. Route
	State Route



THIS MAP COMPLIES WITH NATIONAL MAP ACCURACY STANDARDS FOR SALE BY U. S. GEOLOGICAL SURVEY, WASHINGTON, D. C. 20242  
A FOLDER DESCRIBING TOPOGRAPHIC MAPS AND SYMBOLS IS AVAILABLE ON REQUEST

HIGHLAND PARK, MICH.  
N4222.5-W8300/7.5

1968  
AMS 4368 I NE-SERIES V862

39B



LANSING  
MICHIGAN 48918

MICHIGAN HISTORY DIVISION  
ADMINISTRATION, PUBLICATIONS,  
RESEARCH, AND HISTORIC SITES  
208 N. Capitol Avenue  
STATE ARCHIVES  
3405 N. Logan Street  
STATE MUSEUM  
505 N. Washington Avenue

April 16, 1975

Dr. William Murtagh  
Keeper of the National Register  
Room 3209  
1100 L Street, N.W.  
Washington, D.C. 20005



Dear Dr. Murtagh:

Enclosed are revisions for the East Chicago Street Historic District, Coldwater, Michigan, Branch County. You will also find a nomination for the Boston-Edison Historic District, Detroit, Michigan, Wayne County for your consideration. A milar map of the Boston-Edison Historic District is being mailed under separate cover in a mailing tube.

We would like to include both districts on the apportionment warrant.

Thank you very much.

Sincerely yours,

A handwritten signature in cursive script that reads "Martha M. Bigelow".

Martha M. Bigelow  
State Historic Preservation Officer

MMB/ah

enclosures

Card



LANSING

MICHIGAN 48918

(517) 373-0510

**MICHIGAN HISTORY DIVISION**  
**ADMINISTRATION, ARCHIVES,**  
**HISTORIC SITES, AND PUBLICATIONS**

3423 N. Logan Street  
517-373-0510

**STATE MUSEUM**  
505 N. Washington Avenue  
517-373-0515

July 29, 1975

Mr. Ward Jandl  
Review Unit  
National Register, National Park Service  
Department of the Interior  
Washington, D. C. 20240

Dear Ward:

Enclosed is the following information that you requested for the Boston-Edison Historic District nomination, Detroit, Michigan, Wayne County:

1. Addendum to description;
2. Seven black and white, 8 x 10 photographs.

If you have any additional questions, please contact me.

Sincerely yours,

A handwritten signature in cursive script that reads "Amy Hecker".

Amy Hecker  
Grants Coordinator  
Michigan History Division

AH/cw

enc.

ENTRIES IN THE NATIONAL REGISTER

STATE MICHIGAN

Date Entered SEP 5 1975

<u>Name</u>	<u>Location</u>
Boston-Edison Historic District	Detroit Wayne County

Also Notified

Hon. Philip A. Hart  
Hon. Robert P. Griffin  
Hon. Charles C. Diggs, Jr.  
  
Regional Director, Midwest Region

State Historic Preservation Officer  
Dr. Martha Bigelow  
Director  
Michigan History Division  
Department of State  
Lansing, Michigan 48918

PR MMott/je 9/15/75

# NATIONAL REGISTER DATA SHEET

1 NAME as it appears on federal register: Boston - Edison Historic District 2 OTHER NAMES: \_\_\_\_\_ 3 date of entry: 9-5-75 4 county code: 163

5 LOCATION street & number: See reverse city / town: Detroit vicinity of: \_\_\_\_\_ state: MI county: Wayne 6 NPS REGION: Midwest

7 OWNER  PRIVATE  STATE  MUNICIPAL  COUNTY  MULTIPLE  FEDERAL (agency name) Public / Private 8 ADMINISTRATOR: \_\_\_\_\_

9 EXISTING SURVEYS  HABS  HAER  NHL 10 FUNDED?  YES  NO 11 CONGRESS. DISTRICT: 13th. 12 SOURCE OF NOMINATION  STATE  FEDERAL \_\_\_\_\_ if state, who prepared form? Floyd Patterson

13 WITHIN NATIONAL REGISTER HISTORIC DISTRICT?  YES, NAME: SAME  NO 14 WITHIN NATIONAL HISTORIC LANDMARK?  YES, NAME: \_\_\_\_\_  NO 15 ACREAGE: 256 16 LOCAL  PRIVATE ORGANIZATION

16 CONDITION  deteriorated  altered  original site 17 features:  SUBSTANTIALLY INTACT-1  SUBSTANTIALLY INTACT-2  SUBSTANTIALLY INTACT-3  
 excellent  ruins  unaltered  moved  
 good  unexposed  reconstructed  unknown  
 fair  unexcavated  excavated  
 NOT INTACT-0  NOT INTACT-0  
 UNKNOWN-4  UNKNOWN-5  
 NOT APPLICABLE-7  NOT APPLICABLE-8  NOT APPLICABLE-9

18 ACCESS  YES - Restricted  YES - Unrestricted  No Access  Unknown 19 ADAPTIVE USE  YES  NO 20 SAVED?  YES  NO 21 IS PROPERTY A HISTORIC DISTRICT?  Yes  No

21 AREAS OF SIGNIFICANCE:  ENGINEERING-11  LANDSCAPE ARCH.-15  POLITICS / GOVT.-21  RECREATION-28  
 ARCHEOLOGY-prehistoric-2  COMMERCE-6  ENTERTAINMENT-26  LAW-16  RELIGION-22  SETTLEMENT-29  
 ARCHEOLOGY-historic-1  COMMUNICATIONS-7  EXPLORATION-12  LITERATURE-17  SCIENCE-23  URBAN PLANNING-31  
 AGRICULTURE-3  CONSERVATION-8  HEALTH-27  MILITARY-18  SOCIAL / HUMANITARIAN-24  OTHER (SPECIFY) \_\_\_\_\_  
 ARCHITECTURE-4  ECONOMICS-9  INDUSTRY-13  MUSIC-19  SOCIAL / CULTURAL-30  
 ART-5  EDUCATION-10  INVENTION-14  PHILOSOPHY-20  TRANSPORTATION-25

22 CLAIMS: explain  
 'first'   
 'oldest'   
 'only'

23 functions WHEN HISTORICALLY SIGNIFICANT: RESIDENTIAL 24 dates of initial construction: 1900-1925 25 ETHNIC GROUP ASSOCIATION: \_\_\_\_\_  
 CURRENTLY: SAME major alterations: \_\_\_\_\_ historic events: \_\_\_\_\_

26 architectural style(s): Georgian and Jacobethan Revival Eclectic 27 architect: \_\_\_\_\_ 28 master builder: \_\_\_\_\_ 29 engineer: \_\_\_\_\_

30 landscape architect / garden designer: \_\_\_\_\_ 31 interior decorator: \_\_\_\_\_ 32 artist: \_\_\_\_\_ 33 artisan: \_\_\_\_\_ 34 builder / contractor: \_\_\_\_\_

35 NAMES give role & date any names here?  
 PERSONAL: \_\_\_\_\_  
 EVENTS: \_\_\_\_\_  
 INSTITUTIONAL: \_\_\_\_\_

36 NATIONAL REGISTER WRITE-UP Residential district <sup>includes over 900</sup> ~~including~~ ~~1925~~ ~~single-family structures built between 1900-~~ ~~1925~~ ~~in Georgian and Jacobethan Revival and Eclectic styles.~~ ~~Early city development, growth, and construction of~~ ~~Henry Ford Hospital, nondiscriminatory regulations and extended corporate families;~~ ~~home of many prominent citizens~~ ~~including businessmen S.S. Kresge, the Fisher Brothers, Henry Ford and William Strickland;~~ ~~Rabbi Leo Franklin; historian~~ ~~C.M. Burton and composer Richard Whiting.~~ ~~also you might say something about the suburban landscaping.~~

5) Roughly bounded by Edison st., Woodward and Linwood Aves, and  
Glynn Court