

# Brightmoor

## AREA FRAMEWORK PLAN

Community Kickoff Summary

Eliza Howell Park

Stoepel  
Park No. 1

# TODAY'S AGENDA



Overview

Feedback Summary

Next Steps

# THE COMMUNITY KICKOFF WAS A SUCCESS!



**65** attendees

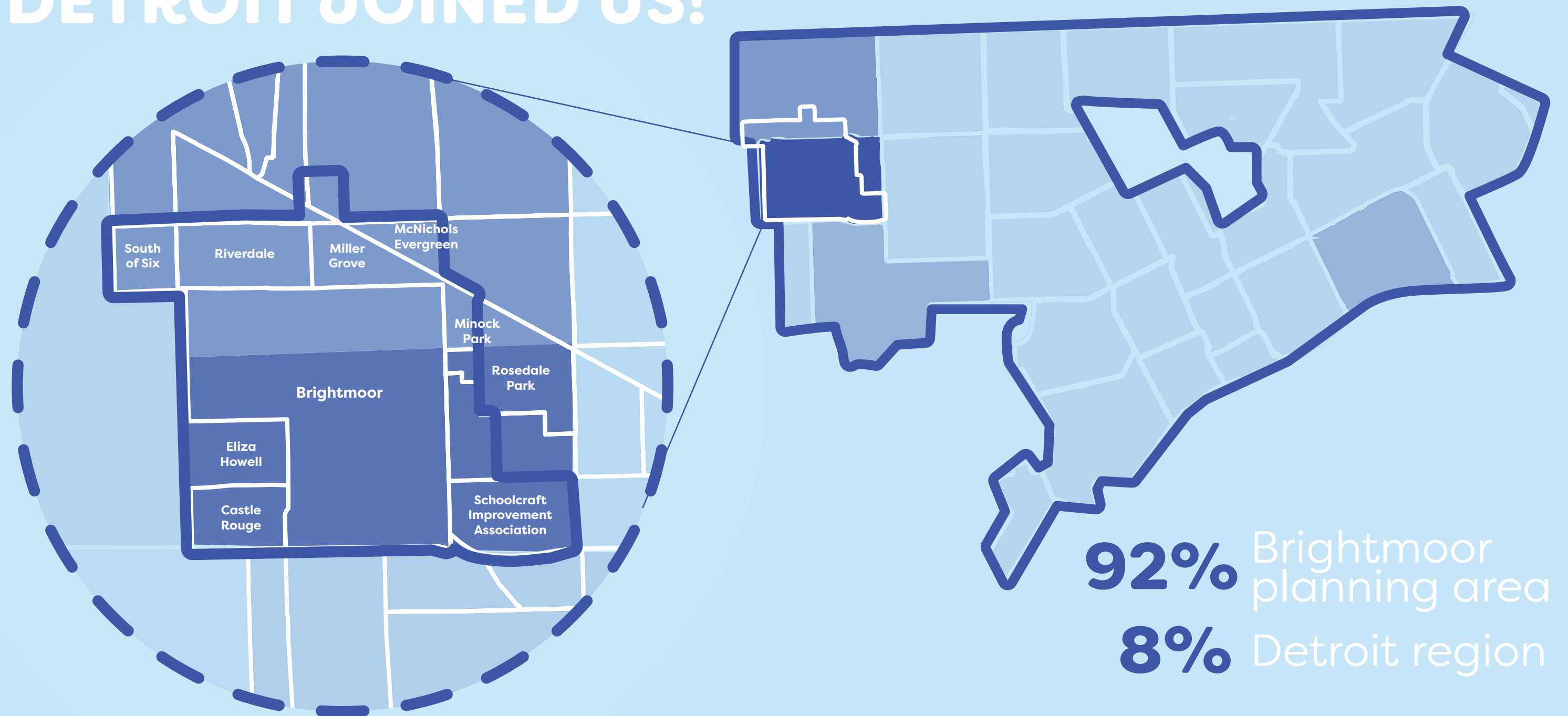


**46** comment cards submitted



**74** feedback flags

# 65 COMMUNITY MEMBERS FROM ACROSS THE NEIGHBORHOOD AND DETROIT JOINED US!



South of Six  
Riverdale  
Miller Grove  
McNichols Evergreen  
Brightmoor  
Minock Park  
Rosedale Park  
Eliza Howell  
Castle Rouge  
Schoolcraft Improvement Association

**92%** Brightmoor planning area  
**8%** Detroit region

# THE MEETING BEGAN WITH AN INTRODUCTION OF CITY DEPARTMENTS AND THEIR ONGOING WORK



**Have questions?**  
Jot them down below and we will answer them during the Community Q&A following today's presentation!

Your name \_\_\_\_\_

Question \_\_\_\_\_

\_\_\_\_\_

\_\_\_\_\_

Phone # or E-Mail address \_\_\_\_\_

Feel free to direct any additional questions to Dominique Boyer at [Dominique.Boyer@detroitmi.gov](mailto:Dominique.Boyer@detroitmi.gov)!



**ATTENDEES SUBMITTED 46 COMMENT CARDS WITH QUESTIONS ABOUT THE CITY DEPTS AND THE PLANNING PROCESS**

# **FEEDBACK SUMMARY**

# OVERALL THEMES FROM THE COMMENT CARDS AND COMMUNITY CONVERSATIONS CENTERED AROUND:

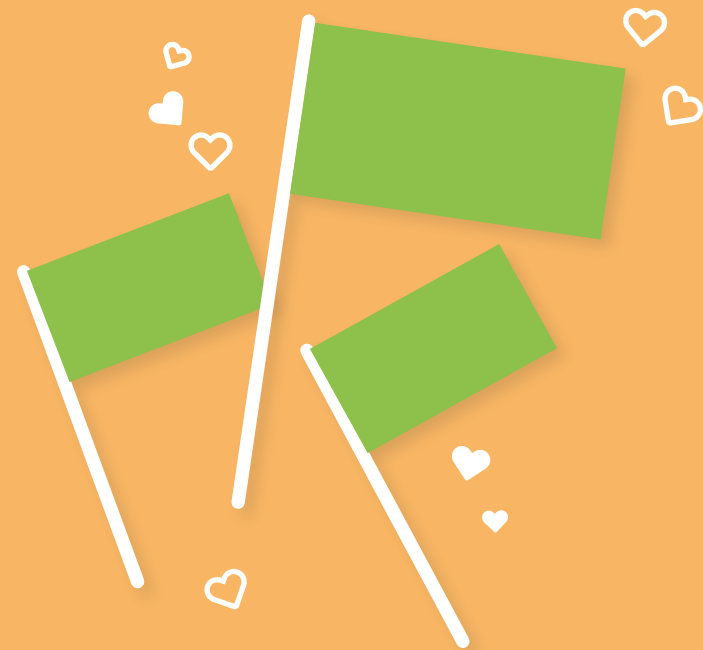
**Affordable  
housing**

**Public safety  
+ blight**

**Meeting  
frequency**

**Transparency  
within the  
planning process**

# ATTENDEES USED A MODEL TO TELL US THEIR HEARTS AND HEARTBURNS ABOUT THEIR NEIGHBORHOOD

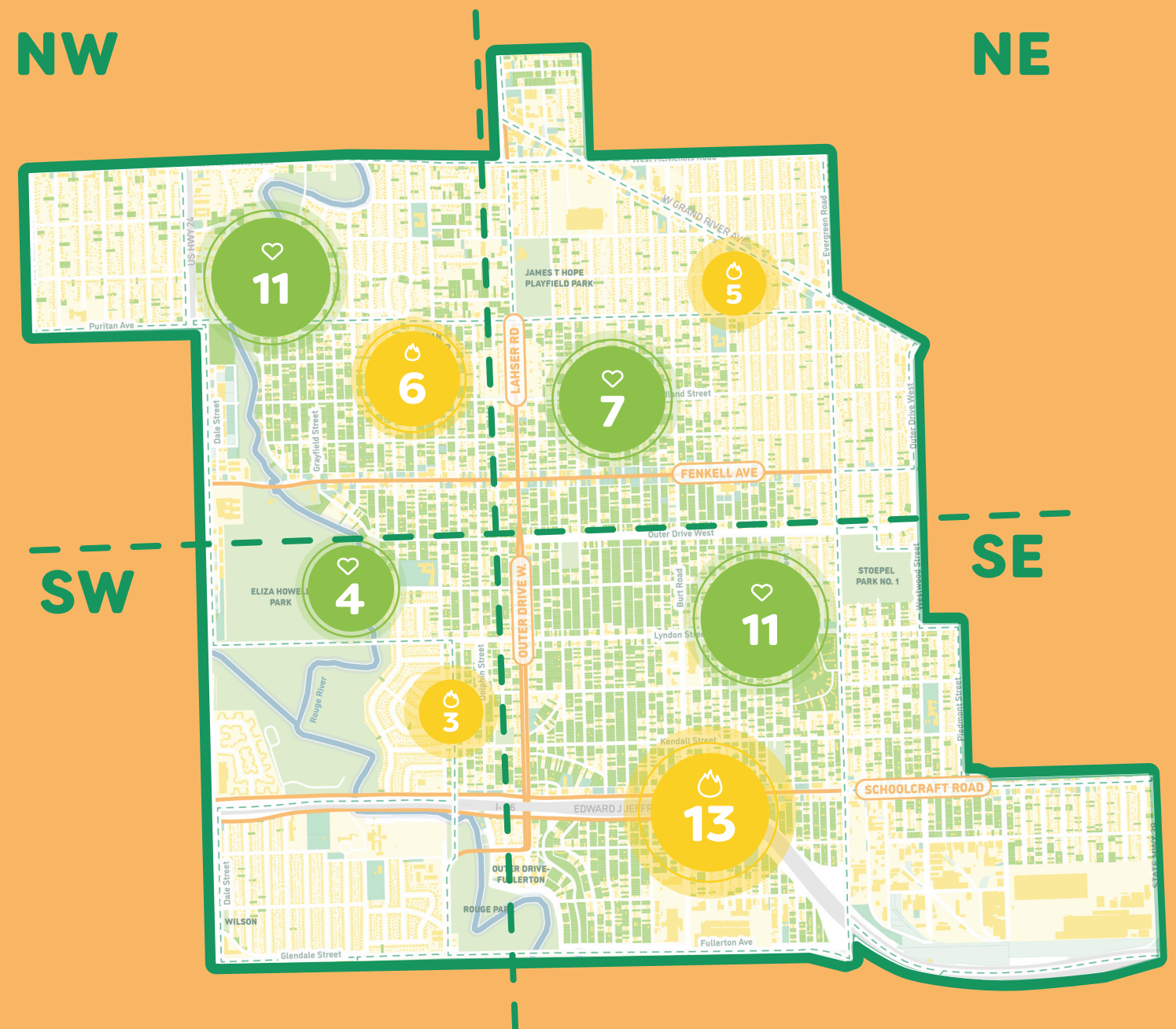
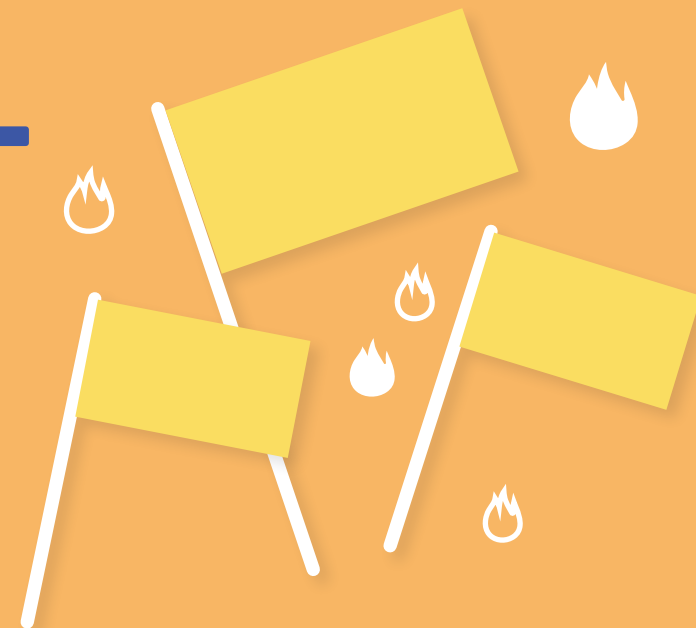


**26**  
**HEARTS**

with ideas  
and cherished  
aspects of the  
neighborhood

**35 HEART-**  
**BURNS**

with  
concerns and  
neighborhood  
challenges





# FEEDBACK THEMES



**Home**

**Community**

**Water**

**Parks +  
Streets**

# PARTICIPANT FEEDBACK WAS ALSO CATEGORIZED INTO FOUR MAJOR THEMES RELATED TO THE FRAMEWORK PLAN:

**Home**

**5 FLAGS**

**Community**

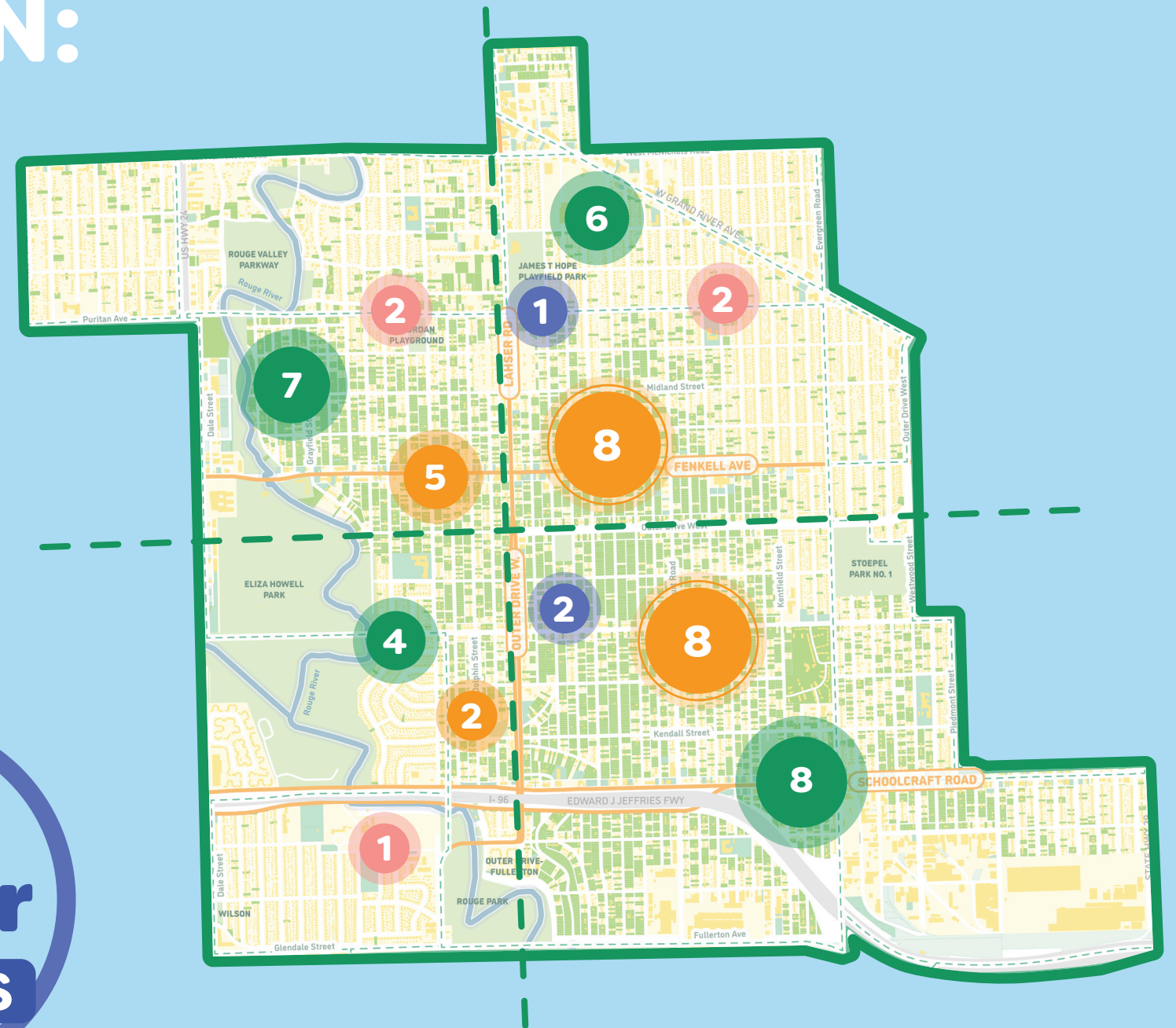
**23 FLAGS**

**Parks + Streets**

**25 FLAGS**

**Water**

**3 FLAGS**



IDEAS ABOUT:

# Home



5 FLAGS

# HOME-BASED HEARTS WERE MOSTLY IDEAS AROUND MORE AFFORDABLE AND MORE DIVERSE HOUSING

“Implement similar housing types throughout the neighborhood”

📍 SOUTHWEST (Eliza Howell)

“Affordable housing infill”

📍 NORTHEAST (Brightmoor)

“People need help to maintain their homes”

📍 NORTHWEST (Brightmoor)

“Need for more 55+ and senior housing”

📍 SOUTHWEST (Castle Rouge)

“Glad and hopeful about Maya Angelou Village”

📍 NORTHEAST (Miller Grove)

IDEAS ABOUT:

# Community



23 FLAGS

# COMMUNITY-RELATED FLAGS WERE ONE OF THE MOST COMMON IN THIS ACTIVITY

“Create a Downtown Brightmoor with shopping and restaurants”

📍 NORTHWEST (along Fenkell)

“Local fruit market”

📍 NORTHEAST (along Fenkell)

“Sit down restaurant”

📍 NORTHEAST (along Fenkell)

“Too many liquor stores”

📍 NORTHEAST (along Fenkell)

“Lots of dumping in this quadrant”

📍 SOUTHWEST (Brightmoor)

“Blighted Liquor store next to farmers market”

📍 NORTHEAST (along Fenkell)

“Safety”

📍 NORTHEAST (Brightmoor)

“Create clean & well lit public transit stops”

📍 MANY AREAS

“Financially lucrative urban agriculture”

📍 SOUTHEAST (Brightmoor)

“Dumping”

📍 SOUTHEAST (Brightmoor)

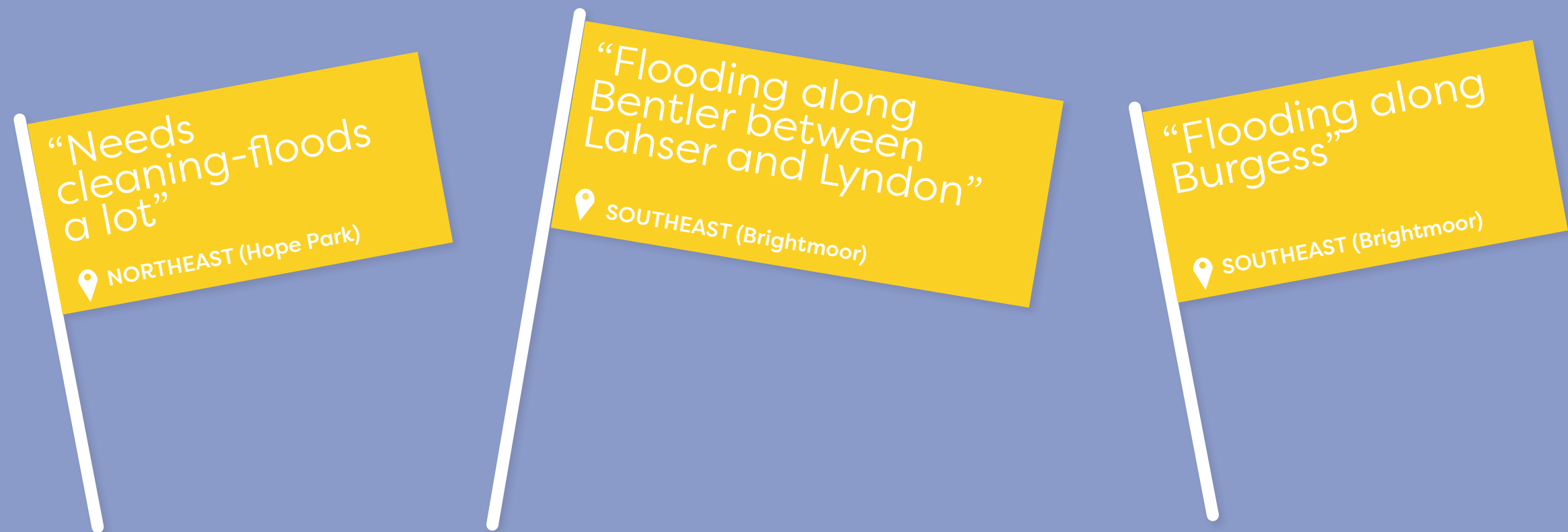
## MANY COMMUNITY IDEAS FOCUSED ON THE FENKELL CORRIDOR AND CONCERNS ABOUT BLIGHT, DUMPING, AND SAFETY

IDEAS ABOUT:  
**Water**



**3 FLAGS**

# WHILE THERE WERE FEW WATER FLAGS, PARTICIPANTS INDICATED AREAS WHERE THERE IS FREQUENT FLOODING IN STREETS AND PARCELS





IDEAS ABOUT:

# Parks + Streets

25 FLAGS



# PARK AND STREET-RELATED FLAGS WERE THE MOST COMMON IN THIS ACTIVITY

“Love the winding/  
curvilinear streets in  
Eliza Howell, helps  
slow traffic”

📍 SOUTHWEST (Eliza Howell)

“Greenway  
along Fenkell”

📍 NORTHEAST (Brightmoor)

“Forestry  
education”

📍 NORTHWEST (Riverdale)

“Trees in park  
are dying”

📍 NORTHEAST (Hope Park)

“Potholes along  
road in Eliza  
Howell Park”

📍 Eliza Howell Park

“Street repair”

📍 SOUTHEAST (Brightmoor)

“Farms or  
green space for  
gardening”

📍 NORTHEAST (Rosedale Park)

“Green space  
and river  
scenery”

📍 Rouge River Valley Parkway

## IDEAS FOCUSED ON STREET IMPROVEMENTS, ACCESS TO NATURE/ TRAILS AND WELL-LOVED EXISTING PARKS