

FIGURE 1

SITE MAP



Detroit, Wayne County, Michigan, United States (42.33155 -83.04664)

FIGURE 3

MERIT DEM MAP



FIGURE X **SOLID WASTE**

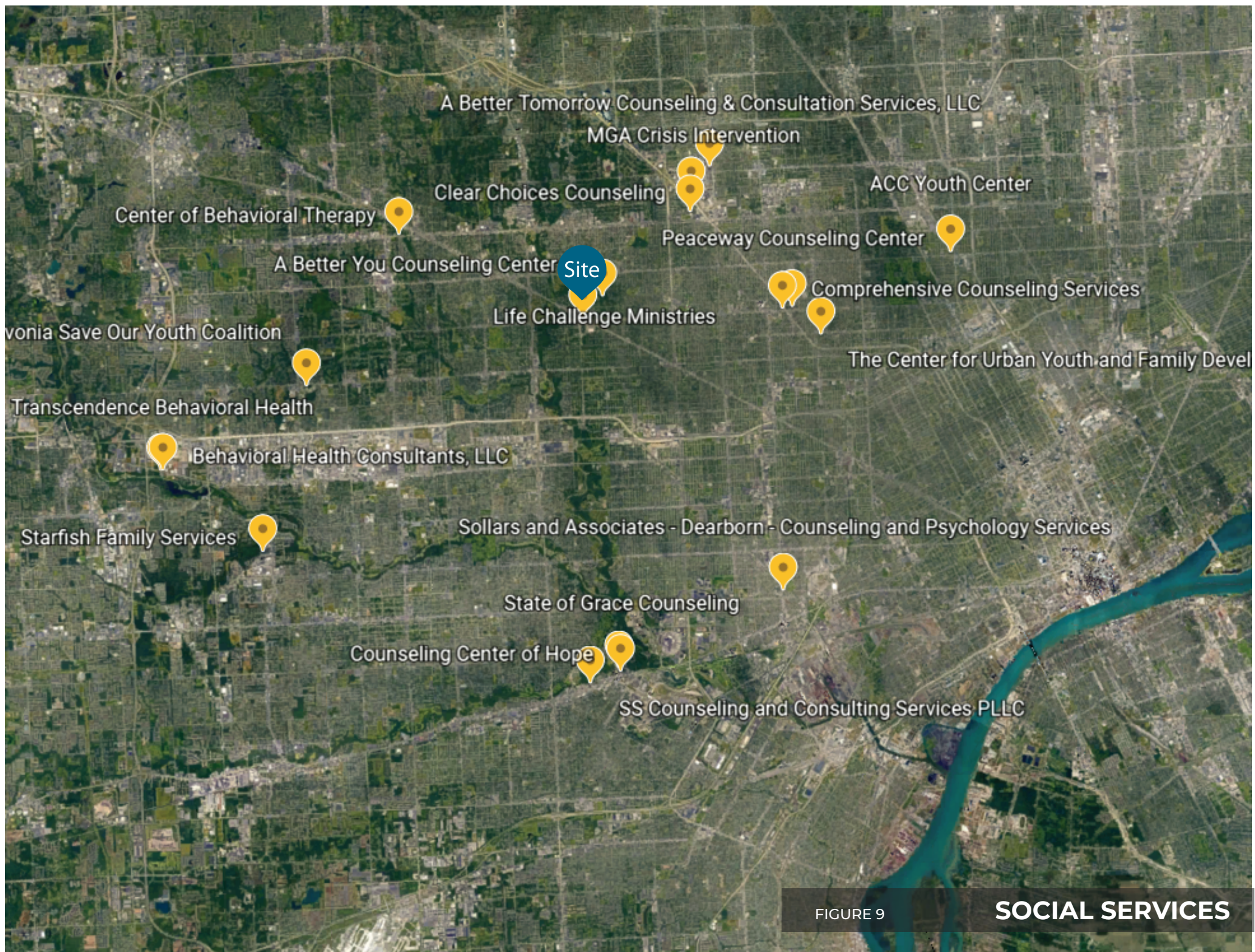
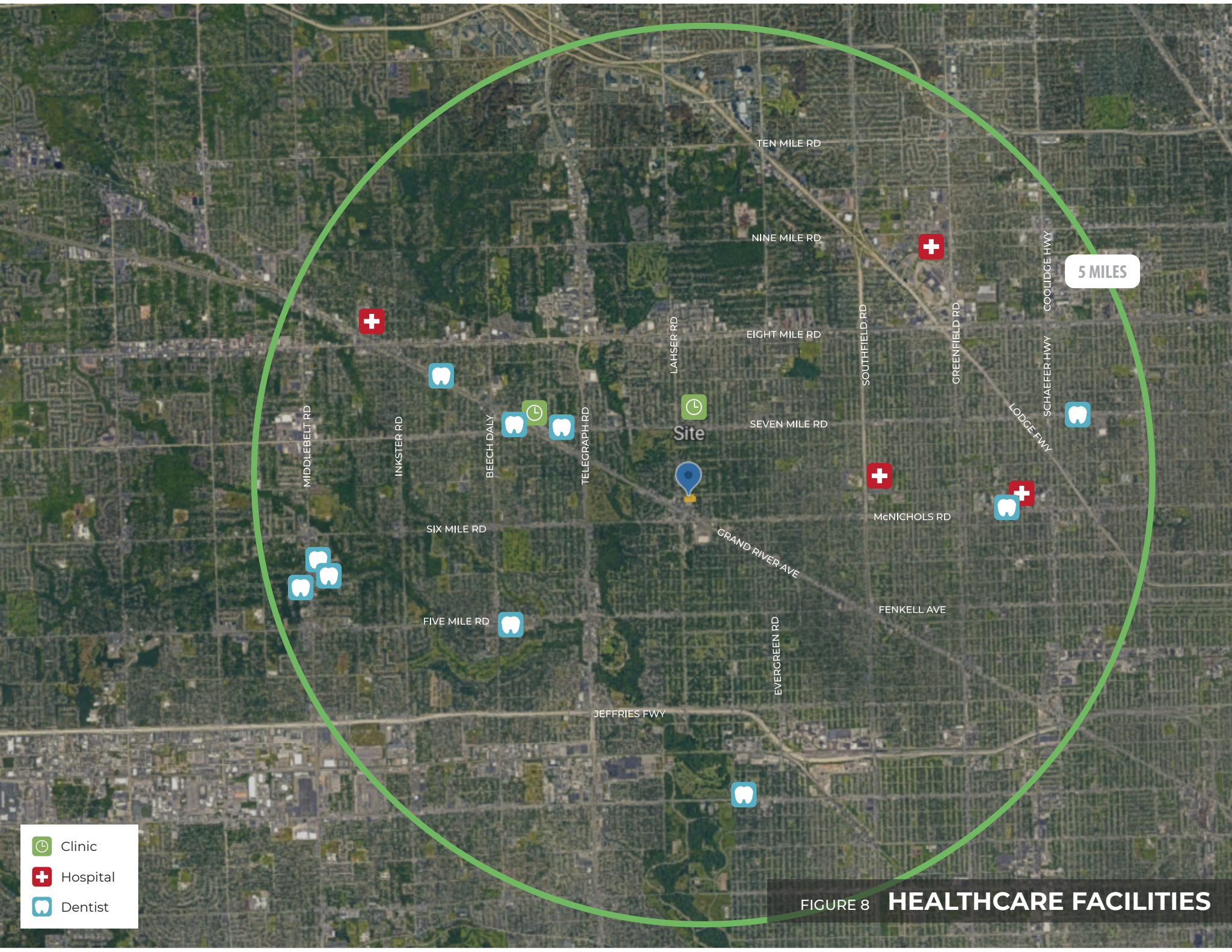


FIGURE 9

SOCIAL SERVICES






-  Clinic
-  Hospital
-  Dentist

FIGURE 8 HEALTHCARE FACILITIES



FIGURE 7 **COMMERCIAL FACILITIES**

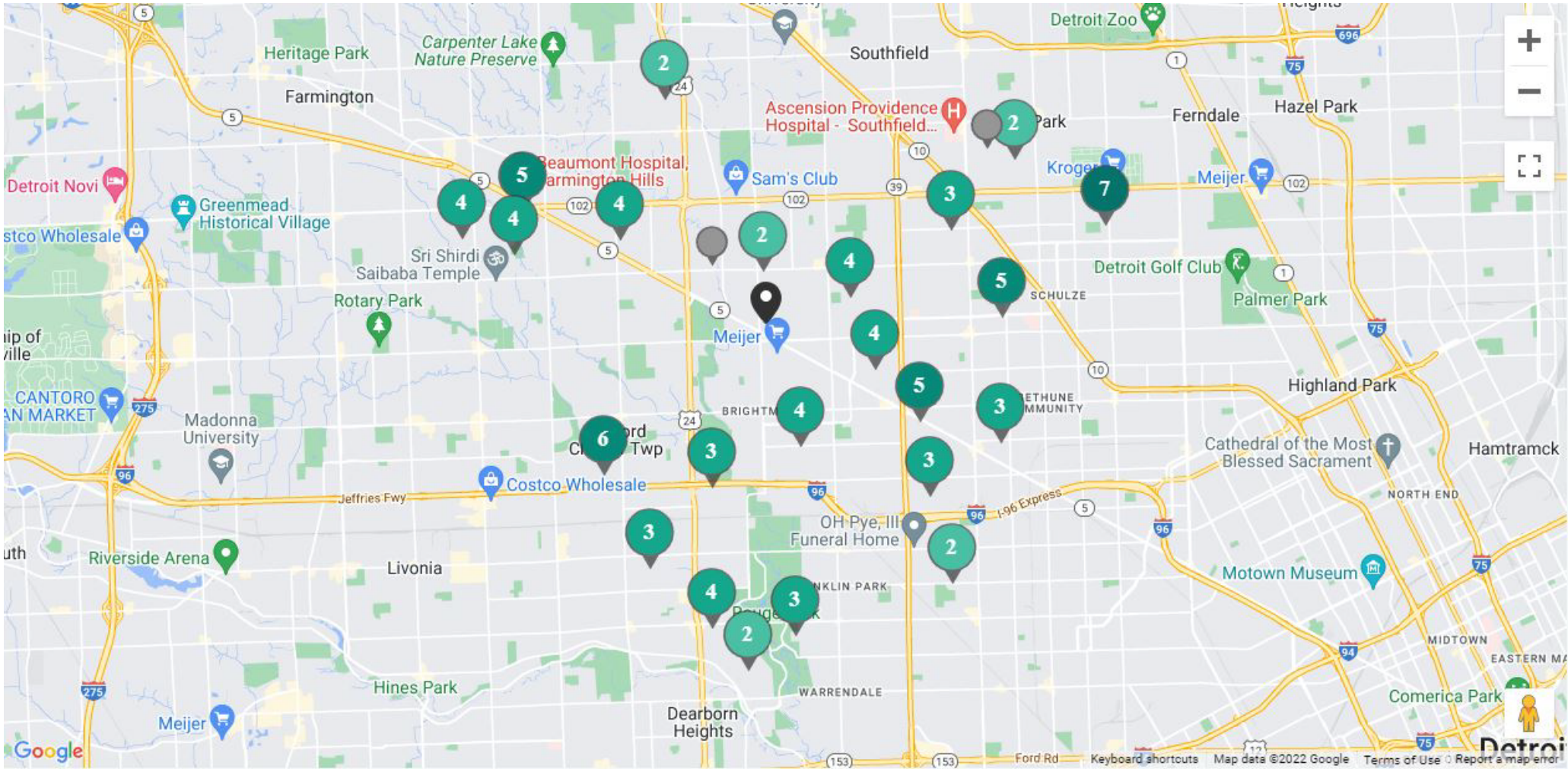


FIGURE 6.1 **PRE-KINDERGARTEN**

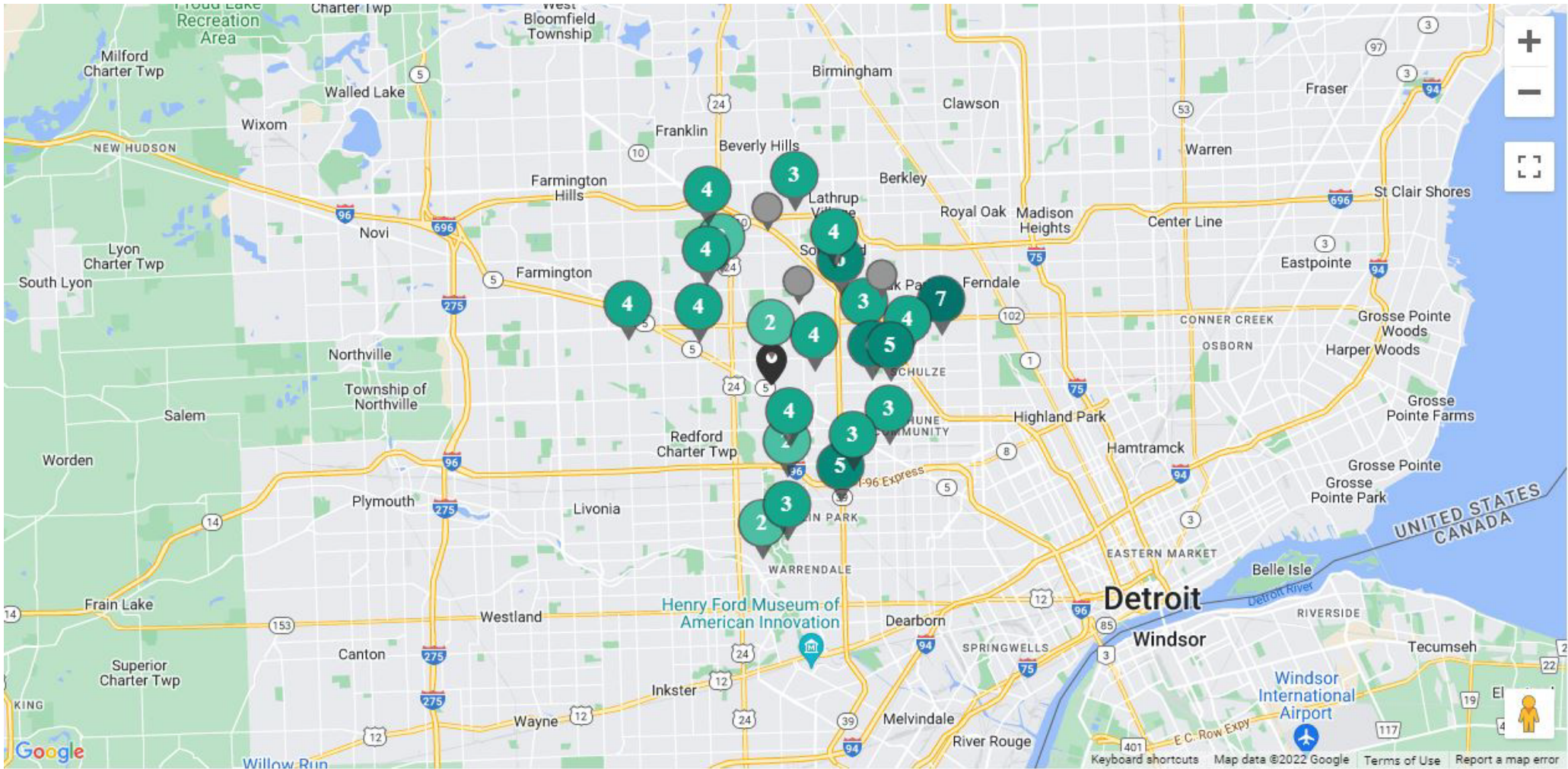


FIGURE 6.3 MIDDLE SCHOOLS

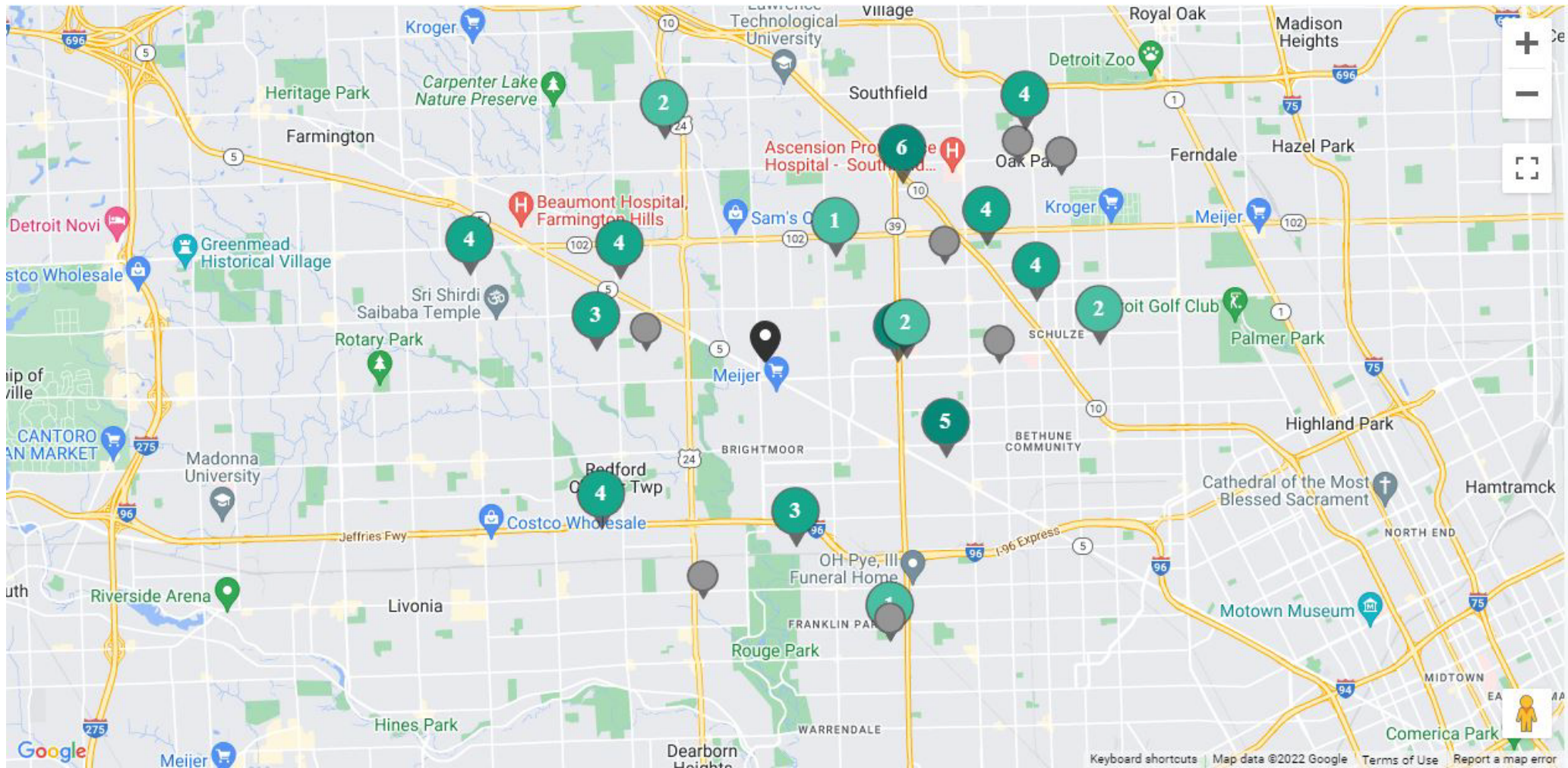


FIGURE 6.4 HIGH SCHOOLS

Table CE1.3 Summary annual household site consumption and expenditures in the Midwest—totals and intensities, 2015

| | Number of housing units (million) | | | | Energy consumption ¹ | | | | | |
|--|-----------------------------------|----------------------|-----------------------------|------------------------------------|---------------------------------|-------------------------|-------------------------|--------------------------------|---------------------------|--|
| | Total Midwest ² | Total (trillion Btu) | Per household (million Btu) | Per household member (million Btu) | Per square foot (thousand Btu) | Total (billion dollars) | Per household (dollars) | Per household member (dollars) | Per square foot (dollars) | |
| All homes | 26.4 | 2,486 | 94.3 | 37.8 | 41.4 | 46.42 | 1,760 | 706 | 0.77 | |
| Housing unit type | | | | | | | | | | |
| Single-family detached | 18.2 | 2,048 | 112.8 | 41.8 | 40.2 | 36.86 | 2,030 | 752 | 0.72 | |
| Single-family attached | 1.3 | 110 | 85.8 | 40.8 | 44.1 | 1.94 | 1,513 | 721 | 0.78 | |
| Apartments in buildings with 2–4 units | 2.0 | 110 | 55.9 | 26.5 | 54.2 | 2.30 | 1,175 | 558 | 1.14 | |
| Apartments in buildings with 5 or more units | 4.0 | 147 | 36.8 | 19.9 | 42.5 | 3.60 | 903 | 490 | 1.04 | |
| Mobile homes | 1.0 | 72 | 73.4 | 28.2 | 65.3 | 1.72 | 1,752 | 673 | 1.56 | |
| Ownership of housing unit | | | | | | | | | | |
| Owned | 17.8 | 1,944 | 109.5 | 43.5 | 40.1 | 35.49 | 1,999 | 795 | 0.73 | |
| Single-family | 16.4 | 1,852 | 112.7 | 44.3 | 39.4 | 33.49 | 2,038 | 801 | 0.71 | |
| Apartments | 0.6 | 35 | 61.7 | 34.5 | 54.6 | 0.73 | 1,292 | 721 | 1.14 | |
| Mobile homes | 0.8 | 56 | 74.5 | 30.4 | 67.3 | 1.27 | 1,685 | 688 | 1.52 | |
| Rented ³ | 8.6 | 542 | 62.9 | 25.7 | 46.9 | 10.93 | 1,268 | 518 | 0.94 | |
| Single-family | 3.0 | 305 | 101.5 | 30.8 | 47.2 | 5.31 | 1,764 | 535 | 0.82 | |
| Apartments | 5.4 | 221 | 41.1 | 21.1 | 45.8 | 5.18 | 961 | 494 | 1.07 | |
| Mobile homes | Q | Q | Q | Q | Q | Q | Q | Q | Q | |

U.S. Energy Information Administration
2015 Residential Energy Consumption Survey: Energy Consumption and Expenditures Tables

An official website of the United States government

United States Census Bureau

QuickFacts
Detroit city, Michigan

What's New & FAQs >

QuickFacts provides statistics for all states and counties, and for cities and towns with a population of 5,000 or more.

Q Enter state, county, city, town, or zip code .. Select a fact ..

CLEAR TABLE MAP CHART DASHBOARD MORE

Table

All Topics Q Detroit city, Michigan

Population Estimates, July 1 2021, (V2021) 632,464

PEOPLE

Population

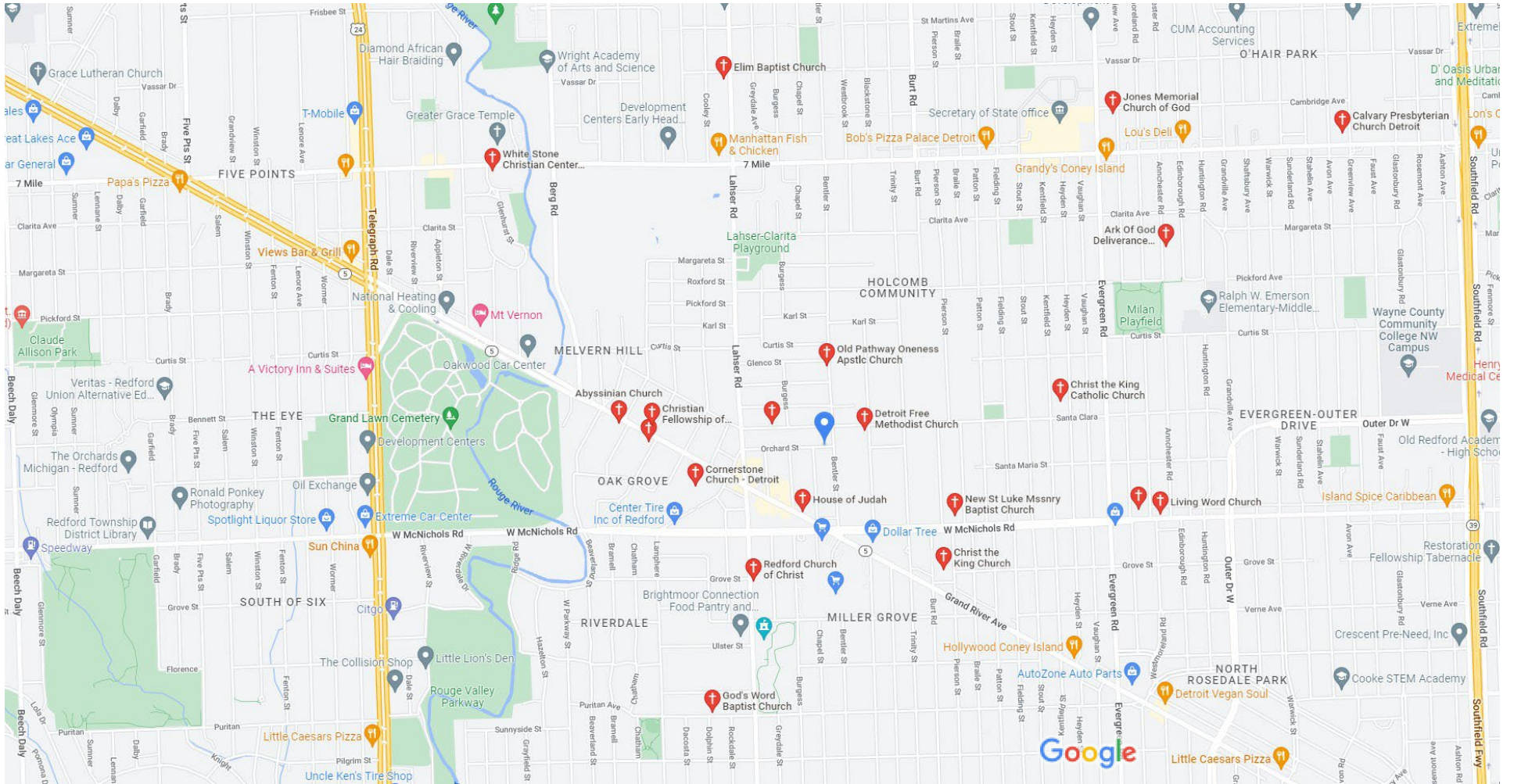
Population Estimates, July 1 2021, (V2021) 632,464

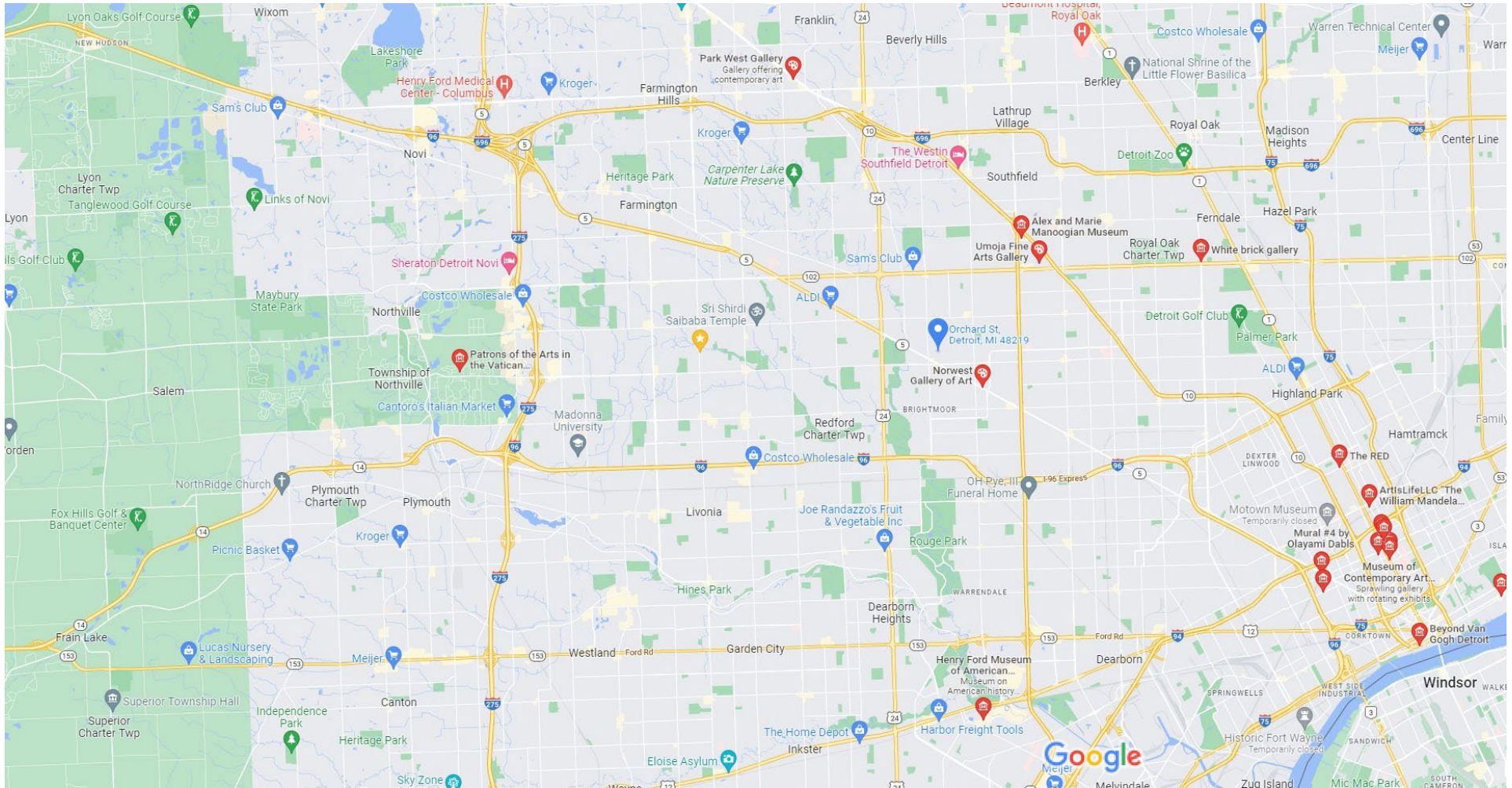
Population estimates base, April 1, 2020, (V2021) 639,614

Population, percent change - April 1, 2020 (estimates base) to July 1, 2021, (V2021) -1.1%

Population, Census, April 1, 2020 639,111

Population, Census, April 1, 2010 713,777





Drinking Water Providers

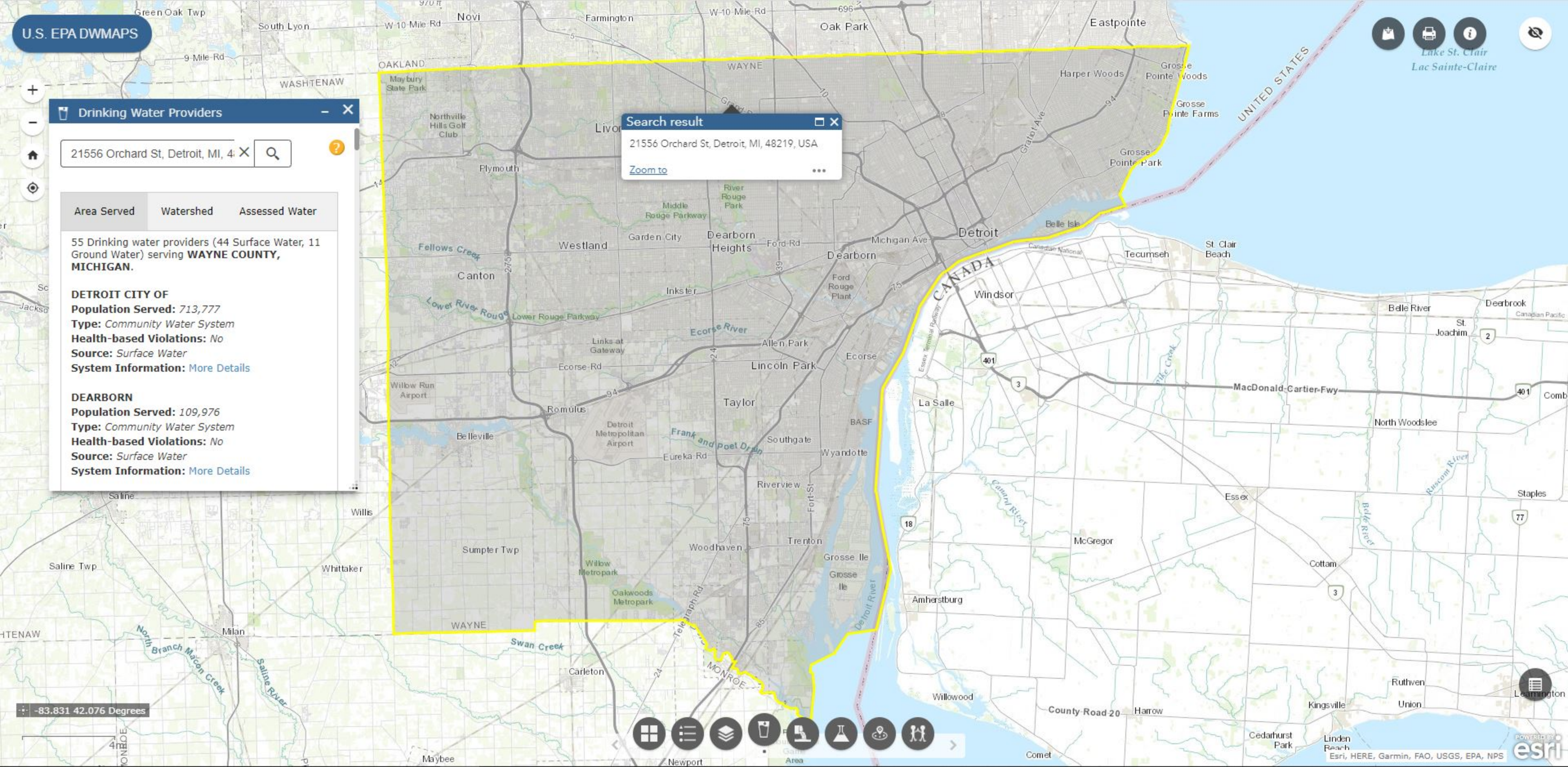
21556 Orchard St, Detroit, MI, 48219, USA

Search result

21556 Orchard St, Detroit, MI, 48219, USA

[Zoom to](#)

| Area Served | Watershed | Assessed Water |
|---|-----------|----------------|
| 55 Drinking water providers (44 Surface Water, 11 Ground Water) serving WAYNE COUNTY, MICHIGAN . | | |
| DETROIT CITY OF | | |
| Population Served: 713,777 | | |
| Type: Community Water System | | |
| Health-based Violations: No | | |
| Source: Surface Water | | |
| System Information: More Details | | |
| DEARBORN | | |
| Population Served: 109,976 | | |
| Type: Community Water System | | |
| Health-based Violations: No | | |
| Source: Surface Water | | |
| System Information: More Details | | |



-83.831 42.076 Degrees

 An official website of the United States government [Here's how you know](#)



[Environmental Topics](#)

[Laws & Regulations](#)

[Report a Violation](#)

[About EPA](#)

[CONTACT US](#)

Safe Drinking Water Information System (SDWIS) Federal Reporting Services

Related Topics: [EPA Home](#) » [Your Drinking Water](#) » [SDWIS Federal Reports Search](#) » [Report Options](#) » [SDWIS PWS Search](#)

Your Drinking Water Query results from SDWIS Fed Reporting Services

| | |
|--------------------------|-------------------------|
| PWS ID | MI0001800 |
| PWS Name | DETROIT CITY OF |
| PWS Type | Community water system |
| Owner Type | Local government |
| Primary Source | Surface water purchased |
| Primacy Type | State |
| Is Wholesaler? | Yes |
| Population Served | 713777 |
| County Served | Wayne |

Related Info

- [Your Drinking Water](#)
- [Safe Drinking Water Act](#)
- [Consumer Confidence Reports](#)
- [Safe Drinking Water Hotline](#)
- [Drinking Water Mapping Application](#)
- [Contact Us about Your Drinking Water](#)

The tables below list all violations that the state reported to EPA for this water system. Health-based violations are listed first, followed by treatment technique, MRDL, monitoring, reporting, and other violations.

| | |
|---|--|
| <p>Health-based</p> | <p>Violations of maximum contaminant levels (MCLs) or maximum residual disinfectant levels (MRDLs), which specify the highest concentrations of contaminants or disinfectants, respectively, allowed in drinking water; or of treatment technique (TT) rules, which specify required processes intended to reduce the amounts of contaminants in drinking water. MCLs, MRDLs, and treatment technique rules are all health-based drinking water standards.</p> |
| <p>Maximum Contaminant Level or MCL</p> | <p>The highest level of a contaminant that is allowed in drinking water. MCLs are set as close to the MCLGs as feasible using the best available treatment technology.</p> |
| <p>Treatment Technique</p> | <p>A required process intended to reduce the level of a contaminant in drinking water.</p> |
| <p>Maximum residual disinfectant level or MRDL</p> | <p>The highest level of a disinfectant allowed in drinking water. There is convincing evidence that addition of a disinfectant is necessary for control of microbial contaminants.</p> |
| <p>Monitoring & reporting</p> | <p>Failure to conduct regular monitoring of drinking water quality, as required by SDWA, or to submit monitoring results in a timely fashion to the primacy agency or EPA.</p> |
| <p>Public notification & other</p> | <p>Failure to provide notification to the public as required by the Violations of Public Notification Rule and the Consumer Confidence Report Rule, and violations of other requirements such as those violations related to variances and exemptions.</p> |

Violations

| Violation Category Code | Violation Type Description | Rule Name | Contaminant Name | Compliance Status Description | Compliance Period Begin Date | Compliance Period End Date |
|--------------------------------|---|--------------------------|--------------------------|--------------------------------------|-------------------------------------|-----------------------------------|
| MR | Monitoring, Repeat Major (TCR) | Total Coliform Rule | Coliform (TCR) | Returned to Compliance | 01-Jun-98 | 30-Jun-98 |
| MR | Monitoring, Repeat Minor (TCR) | Total Coliform Rule | Coliform (TCR) | Known | 01-Jul-95 | 31-Jul-95 |
| MR | Monitoring, Repeat Major (TCR) | Total Coliform Rule | Coliform (TCR) | Known | 01-Mar-95 | 31-Mar-95 |
| MR | Monitoring, Repeat Major (TCR) | Total Coliform Rule | Coliform (TCR) | Known | 01-Feb-95 | 28-Feb-95 |
| MR | Monitoring, Routine Minor (TCR) | Total Coliform Rule | Coliform (TCR) | Known | 01-Dec-91 | 31-Dec-91 |
| MR | Monitoring, Repeat Minor (TCR) | Total Coliform Rule | Coliform (TCR) | Known | 01-Apr-91 | 30-Apr-91 |
| Other | Consumer Confidence Report Complete Failure to Report | Consumer Confidence Rule | Consumer Confidence Rule | Returned to Compliance | 01-Jul-20 | - |

All Facilities

| Facility Name | Facility Id | Is Source | Facility Type Description | Water Type Description | Availability Description | Facility Activity Status |
|-----------------------------------|--------------------|------------------|----------------------------------|-------------------------------|---------------------------------|---------------------------------|
| CONNECTION TO GLWA | 10896 | Yes | Consecutive Connection | Surface water | Permanent | Active |
| SPRINGWELLS/NORTHEAST WTPS INTAKE | 3504 | Yes | Intake | Surface water | Permanent | Inactive |
| LAKE HURON WTP INTAKE | 3503 | Yes | Intake | Surface water | Permanent | Inactive |
| SOUTHWEST FIGHTING ISLAND INTAKE | 3448 | Yes | Intake | Surface water | Permanent | Inactive |
| WATERWORKS PARK INTAKE | 3447 | Yes | Intake | Surface water | Permanent | Inactive |

| Facility Name | Facility Id | Is Source | Facility Type Description | Water Type Description | Availability Description | Facility Activity Status |
|---------------------|-------------|-----------|---------------------------|------------------------|--------------------------|--------------------------|
| WATERWORKS PARK WTP | 5363 | No | Treatment Plant | - | - | Inactive |
| SPRINGWELLS WTP | 5137 | No | Treatment Plant | - | - | Inactive |
| NORTHEAST WTP | 5362 | No | Treatment Plant | - | - | Inactive |
| SOUTHWEST WTP | 5360 | No | Treatment Plant | - | - | Inactive |
| LAKE HURON WTP | 5359 | No | Treatment Plant | - | - | Inactive |
| DISTRIBUTION SYSTEM | 4697 | No | Distribution System/Zone | - | - | Active |

Treatment Plants

| Facility Name | Facility Id | Treatment Process | Treatment Objective |
|-----------------|-------------|----------------------------|----------------------|
| SPRINGWELLS WTP | 5137 | Coagulation | Particulate removal |
| SPRINGWELLS WTP | 5137 | Filtration, Rapid Sand | Particulate removal |
| SPRINGWELLS WTP | 5137 | Flocculation | Particulate removal |
| SPRINGWELLS WTP | 5137 | Gaseous Chlorination, Pre | Disinfection |
| SPRINGWELLS WTP | 5137 | Inhibitor, Orthophosphate | Corrosion control |
| SPRINGWELLS WTP | 5137 | Rapid Mix | Particulate removal |
| SPRINGWELLS WTP | 5137 | Sedimentation | Particulate removal |
| SPRINGWELLS WTP | 5137 | Gaseous Chlorination, Post | Disinfection |
| SPRINGWELLS WTP | 5137 | Activated Carbon, Powdered | Taste / odor control |
| SPRINGWELLS WTP | 5137 | Fluoridation | Other |
| LAKE HURON WTP | 5359 | Gaseous Chlorination, Post | Disinfection |
| LAKE HURON WTP | 5359 | Activated Carbon, Powdered | Taste / odor control |
| LAKE HURON WTP | 5359 | Coagulation | Particulate removal |
| LAKE HURON WTP | 5359 | Filtration, Rapid Sand | Particulate removal |

| Facility Name | Facility Id | Treatment Process | Treatment Objective |
|----------------|-------------|-------------------|---------------------|
| LAKE HURON WTP | 5359 | Flocculation | Particulate removal |

For more information on a Water System:

Ask the operators of your water system, contact your primacy agency or file a [Freedom of Information Act \(FOIA\)](#) request.

Drinking water in general: Find out more about [your drinking water](#) web site or call the [Safe Drinking Water Hotline](#) (1-800-426-4791). EPA has also prepared a table about various [regulated drinking water contaminants](#).

Tools for accessing EPA drinking water data: [Safe Drinking Water Information System \(SDWIS\) Federal Reporting Services](#) and [Drinking Water Performance and Results Report](#).

Research Data: As well as monitoring the levels of drinking water contaminants for which EPA has set standards, EPA, states, and water systems also carry out studies of contaminants that may need to be regulated in the future. For more information about these contaminants, please see the [National Contaminant Occurrence Database](#).

[Contact Us](#) to ask a question, provide feedback, or report a problem.

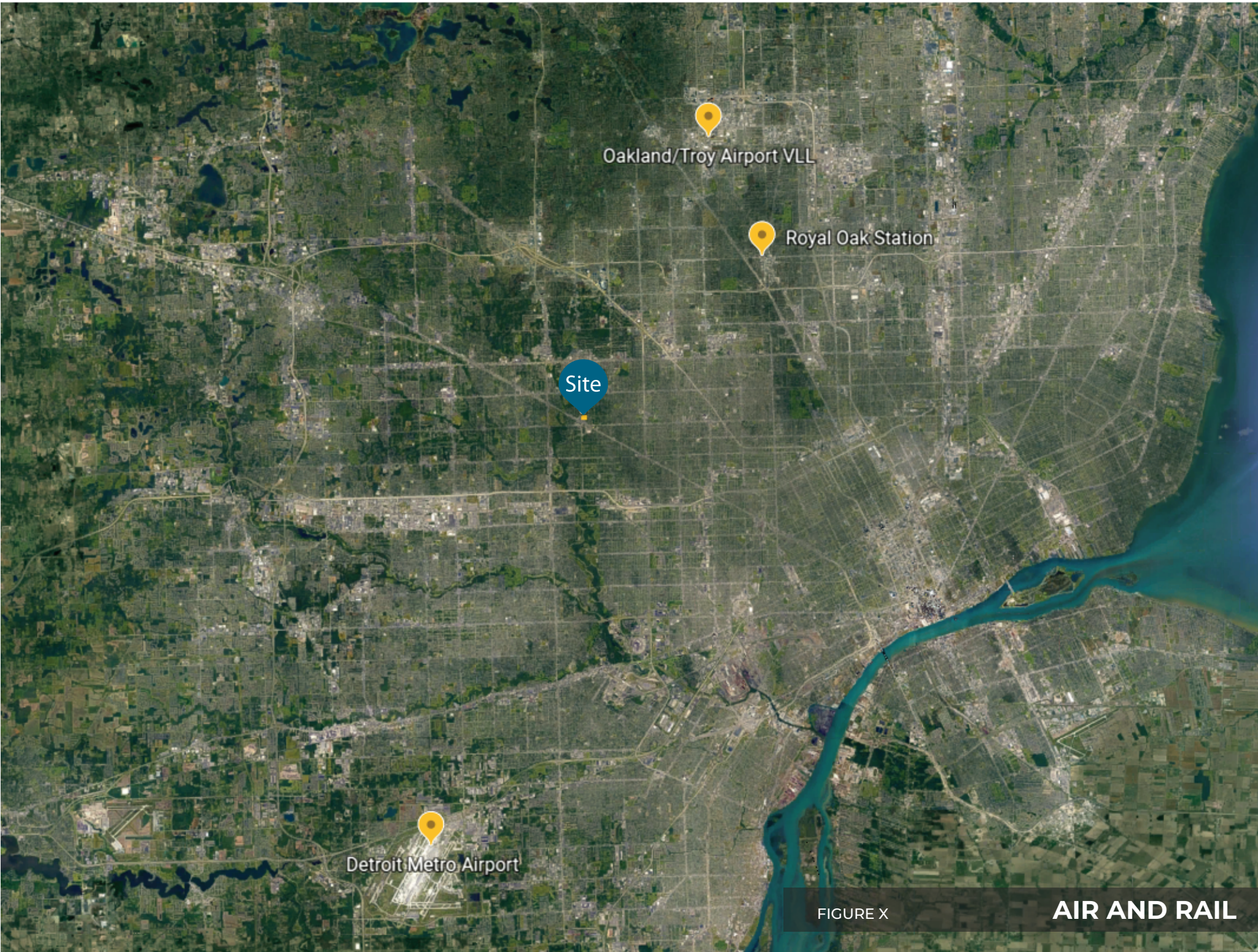


Discover.

- [Accessibility](#)
- [Budget & Performance](#)
- [Contracting](#)
- [EPA www Web Snapshot](#)
- [Grants](#)
- [No FEAR Act Data](#)
- [Plain Writing](#)
- [Privacy](#)
- [Privacy and Security Notice](#)

Connect.

- [Data.gov](#) [EXIT](#)



Oakland/Troy Airport VLL

Royal Oak Station

Site

Detroit Metro Airport

FIGURE X

AIR AND RAIL

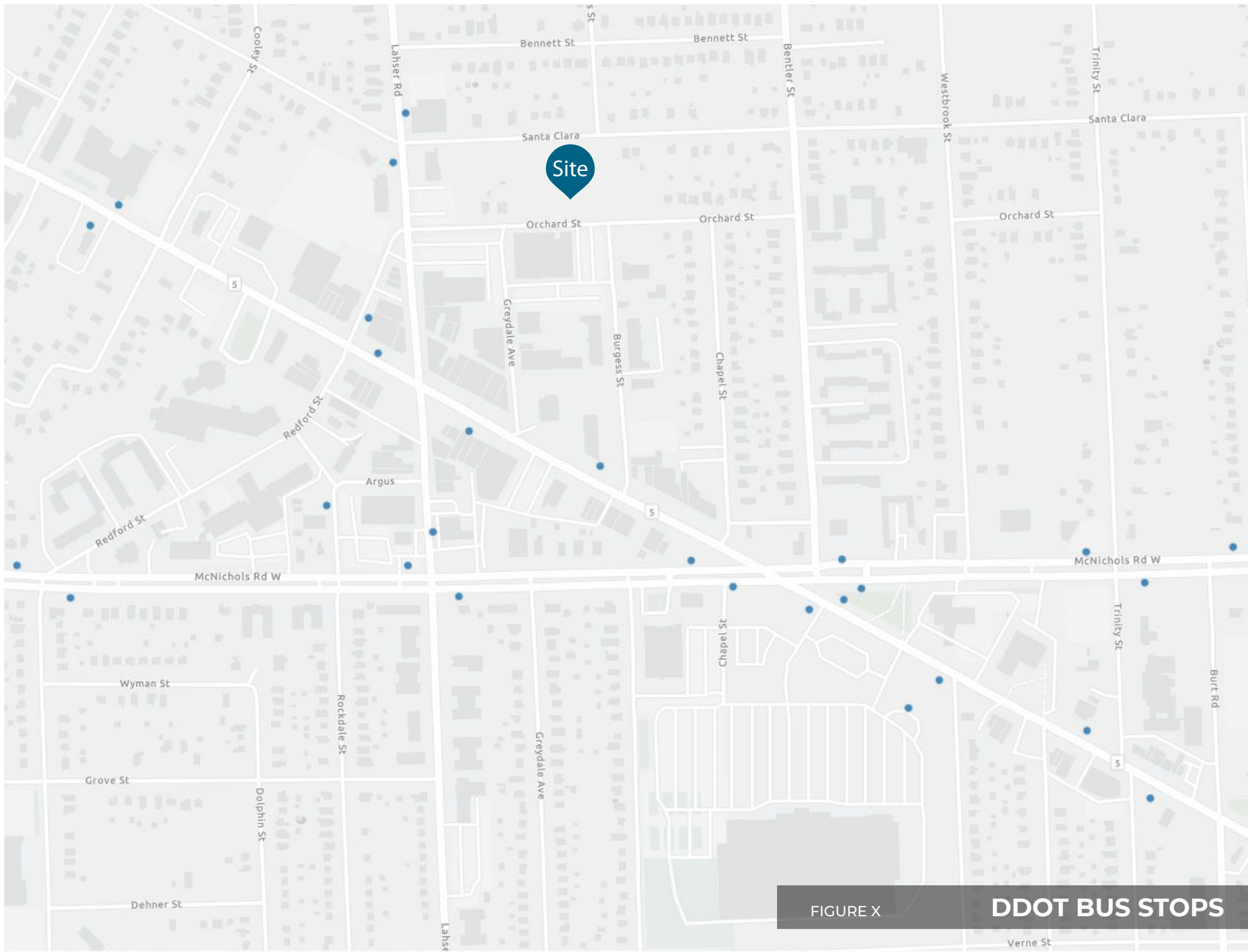


FIGURE X **DDOT BUS STOPS**

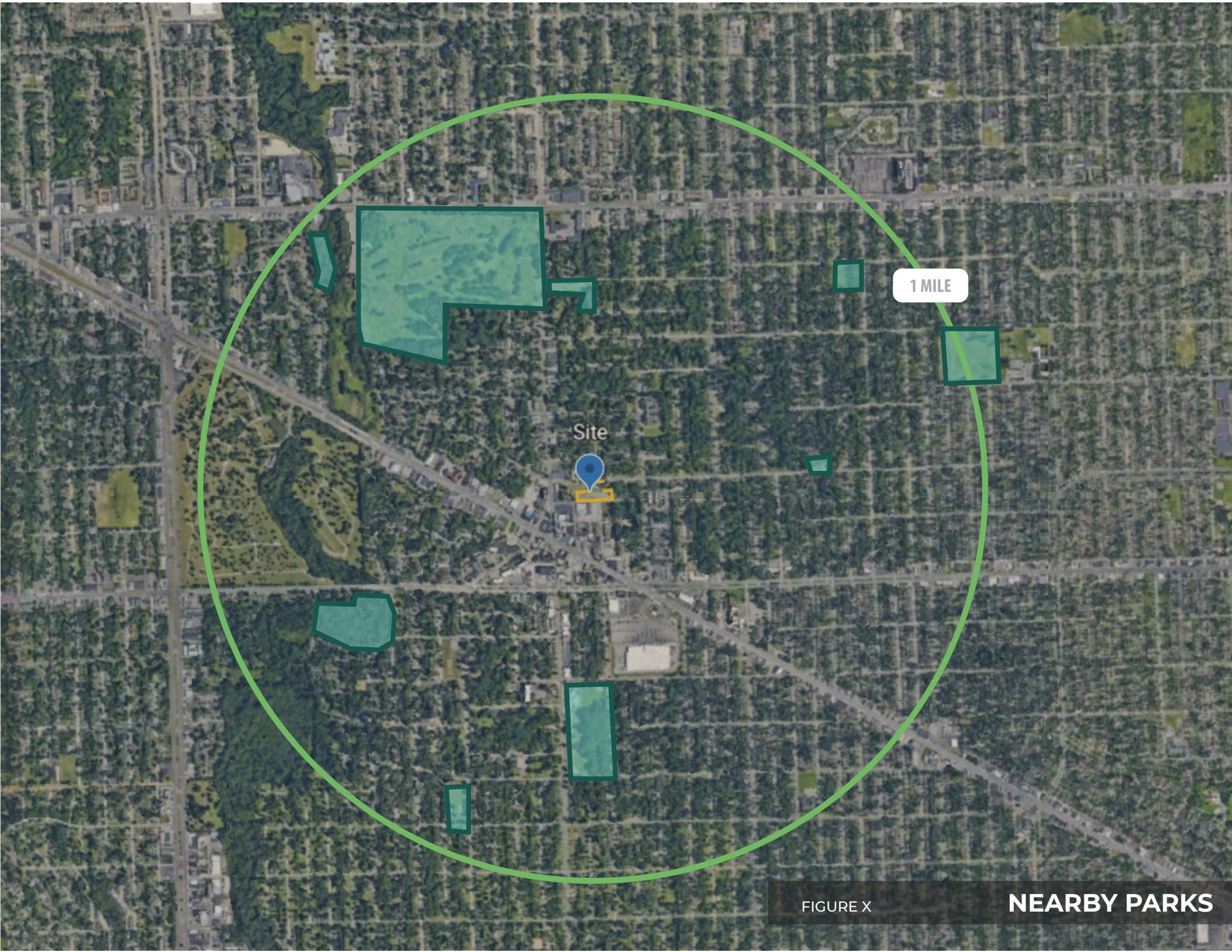


FIGURE X

NEARBY PARKS



Site



FIGURE X

PUBLIC SAFETY