

Heilmann Park Improvement Project

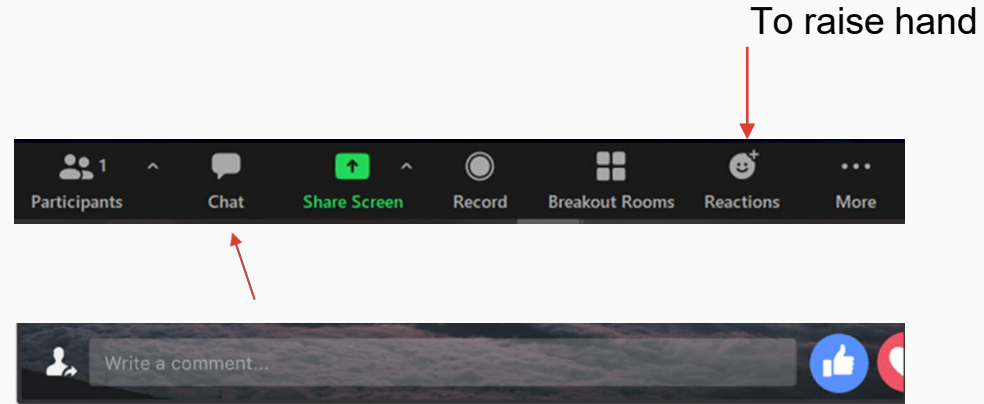
Community Meeting #1
Thursday, October 20, 2022



How to Participate & Sign-In

Zoom Participants:

- Sign in and send questions or comments using the 'Chat' tool
- Raise Hand in the 'Reactions' menu



Phone Participants:

- Press *9 to Raise Hand
- Press *6 to Unmute

This meeting will be recorded and posted to:
<https://detroitmi.gov/departments/detroit-parks-recreation/parks-and-greenways/heilmann-park>

About the Project: Project Team



DEPARTMENT OF
**Planning &
Development**

Antoine Bryant
Director of Planning
and Development

Allen Penniman
East District Director

Khalil Ligon
Lead Urban
Planner, East
Region



DEPARTMENT OF
Neighborhoods

Kayana Sessoms
District 3 Manager

Gerald Harris
District 3 Deputy
Manager



**General Services
Department**

Dara O'Byrne
Chief Parks Planner

Shamori Whitt
Parks Planner



Brad Dick
Group Executive

Tim Karl
Chief of Landscape Architecture

Jeff Klein
Deputy Chief of
Landscape Architecture



Tonight's Agenda

**About the Project
Timeline**

What We Heard

Park Opportunities

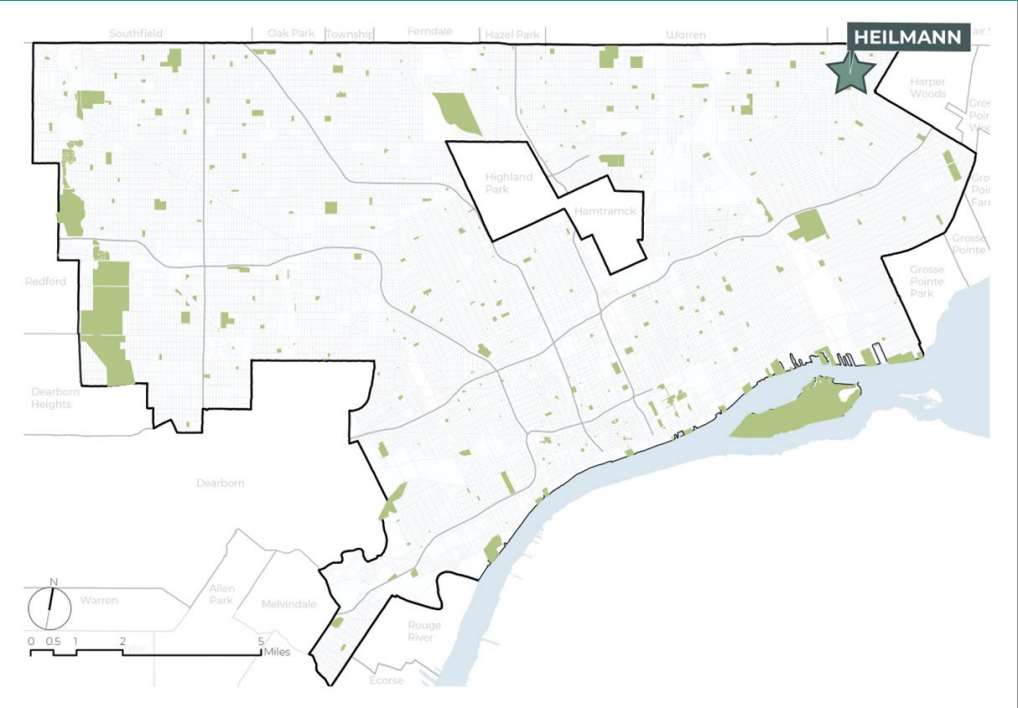
Poll and Discussion

Next Steps



About the Project

Heilmann Park Location- District 3 (East Detroit)



About the Park:

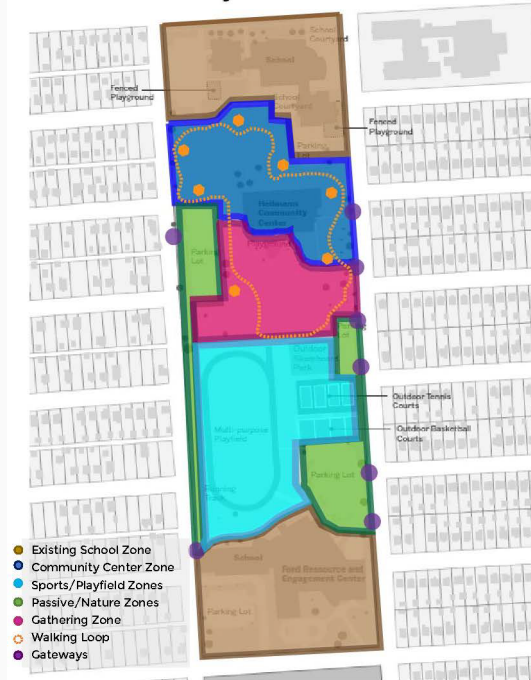
Community Park with
Recreation Center
Amenities:

- Playground
- Skate Park
- Tennis/Multipurpose Courts
- Basketball Courts
- Multipurpose Playfield
- Running Track
- Walking Path
- Parcel also includes Fisher Upper Academy, Fisher Lower Academy & Ford Resource and Engagement Center



About the Project: G7 Framework Plan

- December 2019 through June 2021
- Framework planning process engaged residents and stakeholders from 4 different neighborhoods
- 5 community meetings
- 5 feedback surveys
- 630 completed individual surveys



HEILMANN PARK | Recommendations

Recommendation:

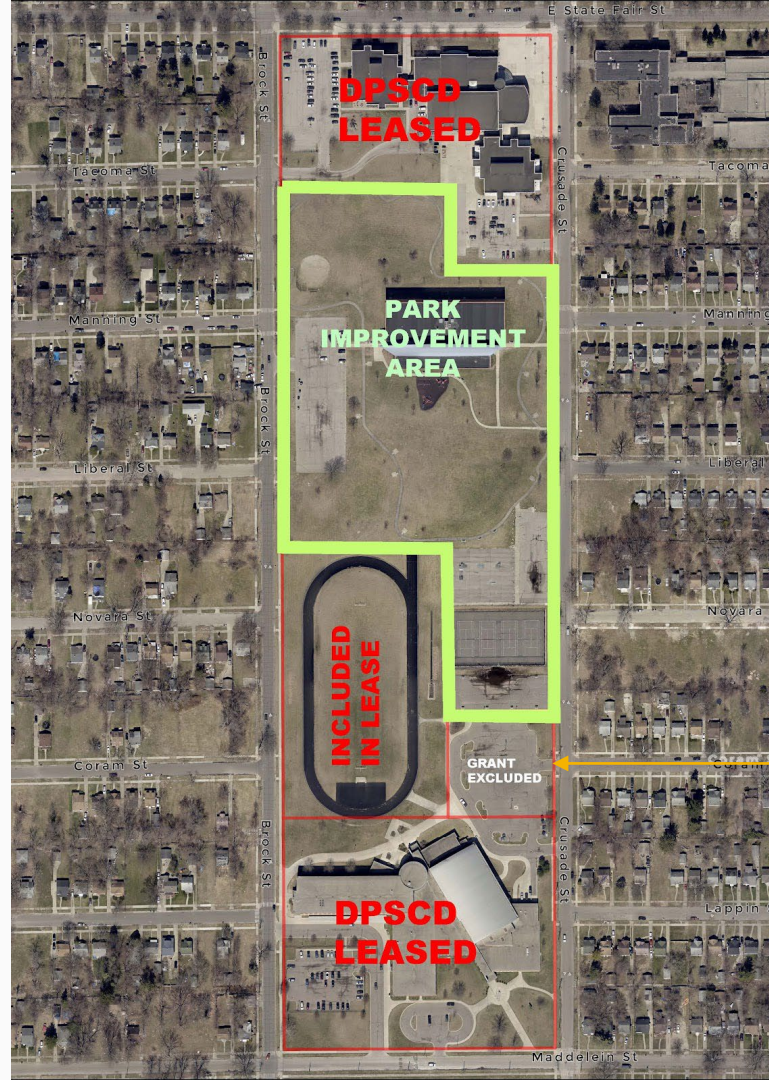
Support park improvement projects through SNF (CDBG \$900,000 budget)

- Plant trees to define edge of park and break up the large spaces into smaller gathering areas
- Define clear gateways/entrances to park
- Install rain gardens along west side of park/convert to green parking lots to address standing water issues
- Resurface and/or paint existing courts, play areas and walking loop (include distance markers)
- Create smaller gathering places and picnic areas using topography and furniture
- Open/rehab the Skate Park
- Explore community partnerships for universal, all-age/gender programming
- Identify and integrate COVID/pandemic design considerations

Outdoor Recreation Legacy Partnership Grant

Outdoor Recreation Legacy Partnership (ORLP) Grant will help do the following:

- Replace/Renovate
 - Playground
 - Basketball Courts
 - Tennis/Multiuse Court
 - Walking Path
 - Skate Park
- NEW Amenities
 - Picnic Areas
 - Exercise Stations
 - Bike Racks
 - Raingardens
 - Trees
 - Signage



Improvement Project DOES NOT include leased school property (field) or South Parking Lot

Heilmann Park Current Conditions



Timeline



Heilmann Park: Project Timeline

PARK IMPROVEMENTS AT HEILMANN PARK





What We Heard

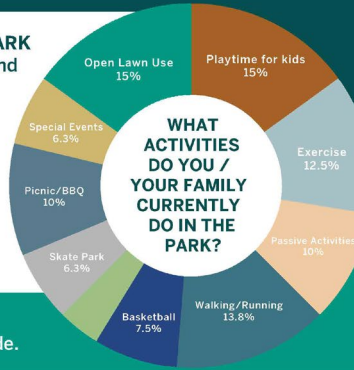
HEILMANN PARK IMPROVEMENT SURVEY RESULTS



MOST RESIDENTS USE THE PARK
for open lawn group activities and
playtime for children.

MOST RESIDENTS ARE
Parent of child(ren) between
6-12 years old.

MOST RESIDENTS WHO
responded to this survey are
between the ages of 25-34.



53% OF RESIDENTS
are located in the 48205 zip code.



25% OF RESIDENTS
feel that adding fitness
equipment isn't necessary.



50% OF RESIDENTS
would like to see a
picnic shelter added.



60% OF RESIDENTS
agree that the current tennis
court should be improved.

59% OF RESIDENTS AGREE that providing open space
is very important for residents who use Heilmann Park.

67% OF RESIDENTS AGREE
that making improvements to the existing walking loop is
very important for residents who use Heilmann Park.

TOP FIVE AMENITIES RESIDENTS WOULD LIKE TO SEE



Walking Path



Traditional
Playground



Picnic Shelter



Improvements to
basketball court



Improvements
to tennis court

ISSUES:

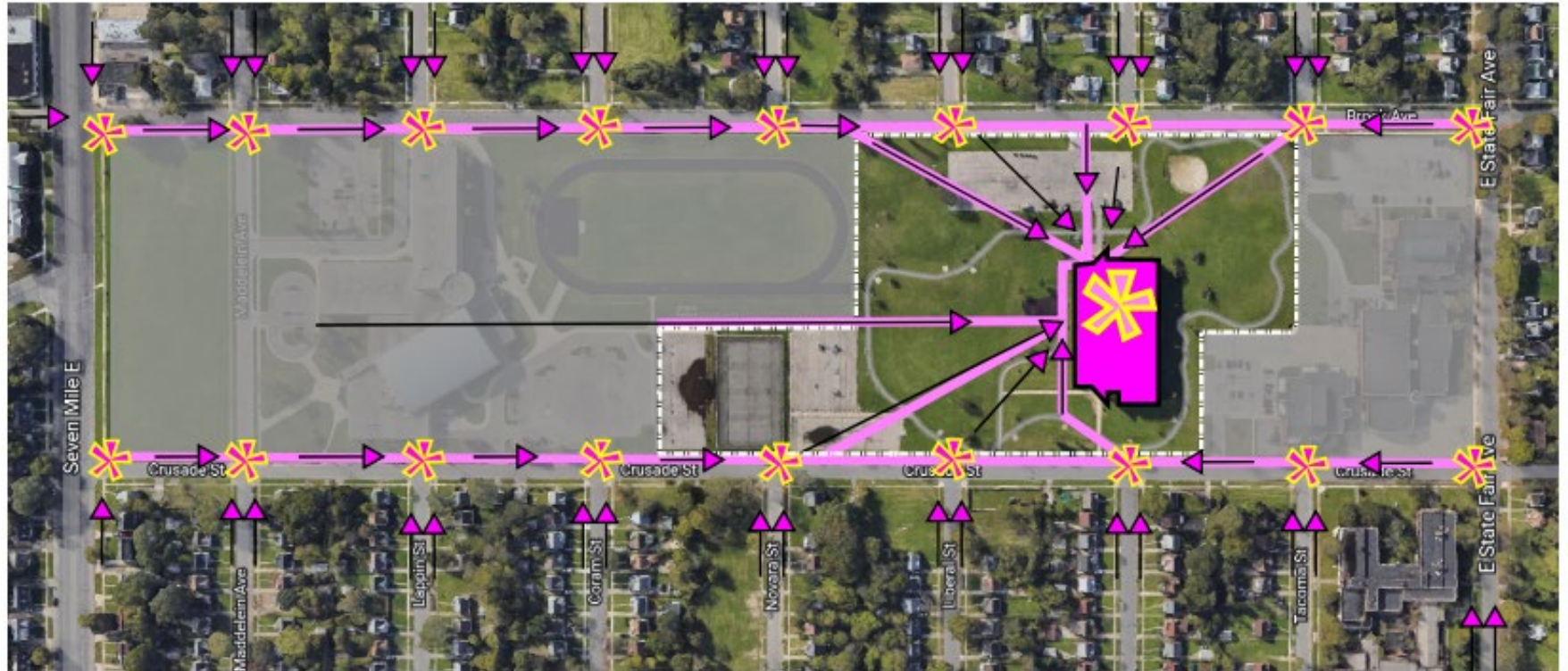
- Safety
- Park & Neighborhood Neglect
- Vandalism & Glass
- Motorcycles/ATVs
- Not enough for kids to do
- People do not use what is there NOW!

COMMENTS/SUGGESTIONS:

- Great Park but could be better!
- Outdoor programming
- Provide activities that children do not commonly come in contact with like golf, skateboarding, etc
- Community needs better outdoor spaces
- Larger playground area for different age groups
- Make sure football & cheer have space to practice
- Our kids deserve the best in our centers and parks!

GETTING TO THE PARK

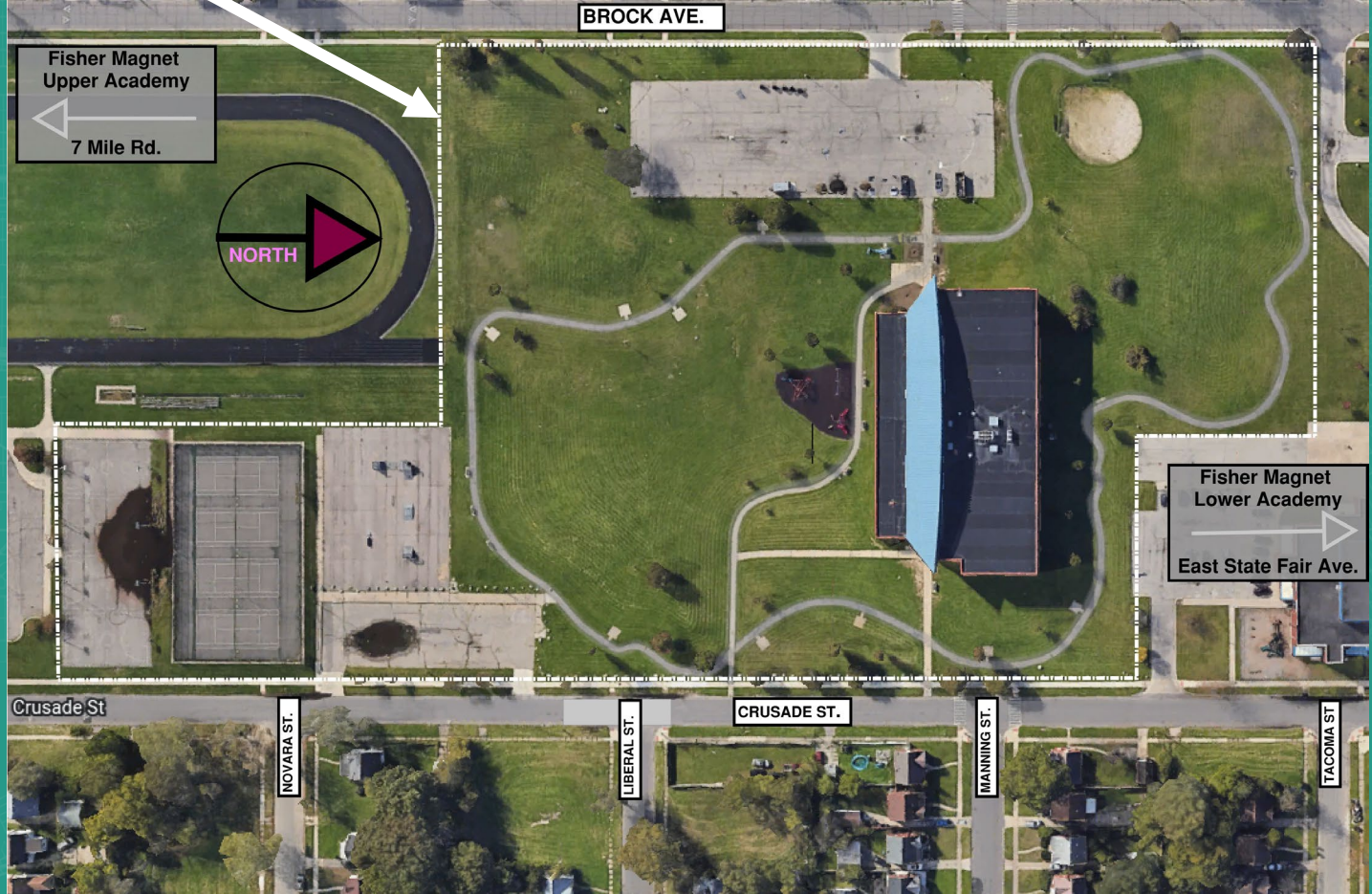
NORTH





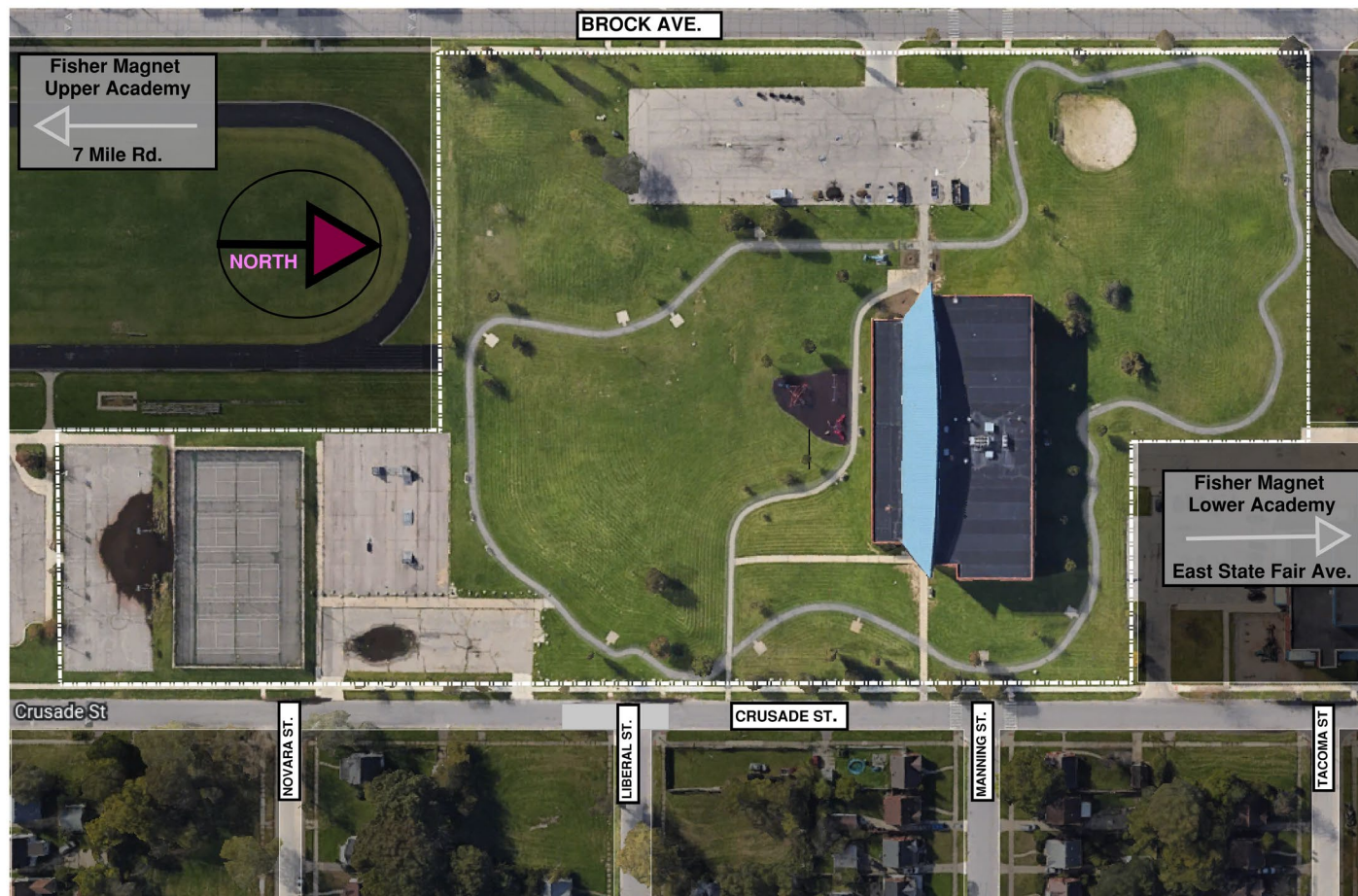
Park Opportunities

THE PARK PROPERTY LINE



FOCUSED VIEW

Park Funding does not include areas outside of the boundary's shown or in the shaded areas

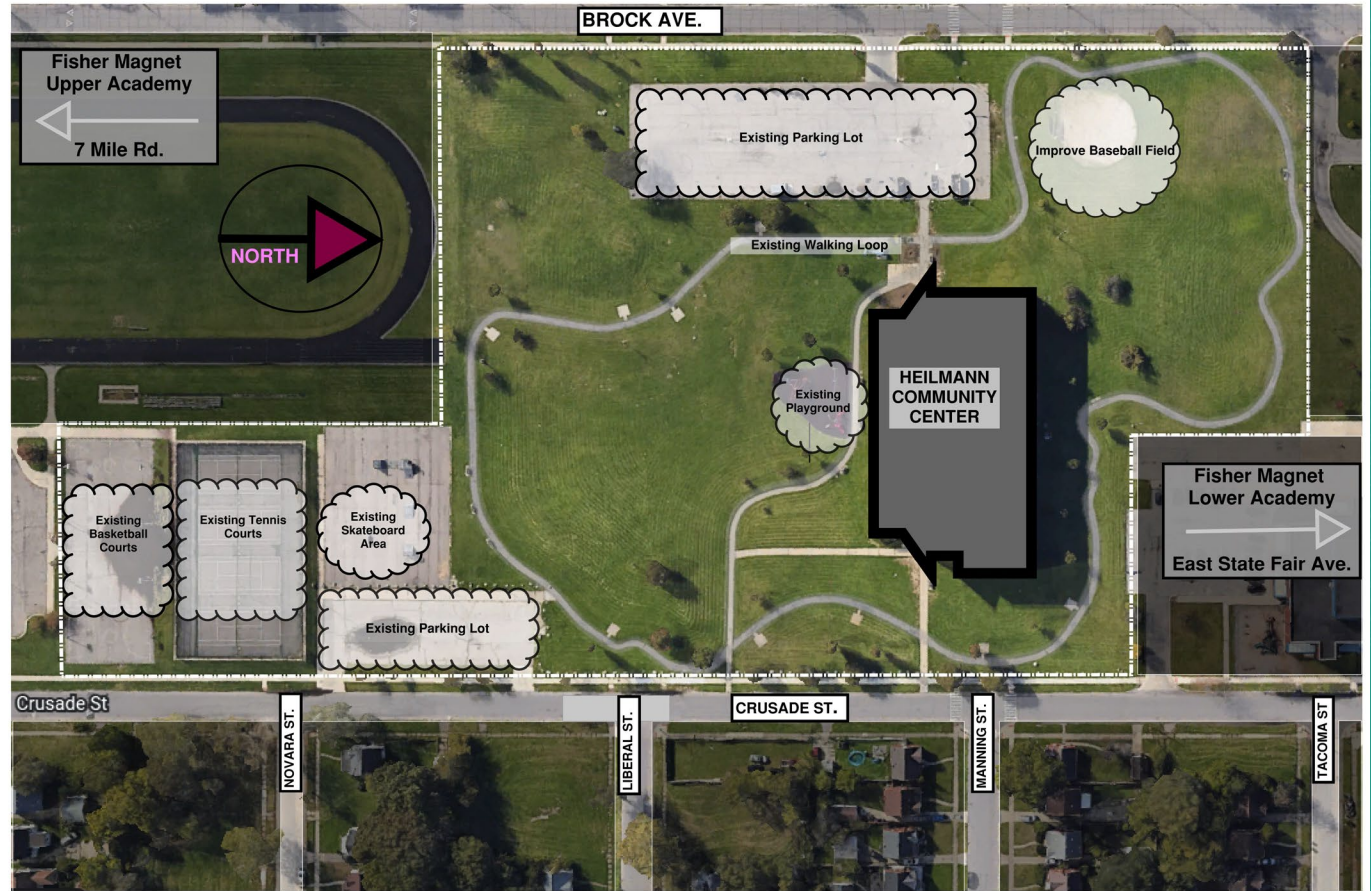


EXISTING SITE FEATURES CONSIDERED FOR IMPROVEMENTS

Should we fix some of the things we have?

Should we reduce the amount of Tennis Courts? Or Basketball Courts etc.

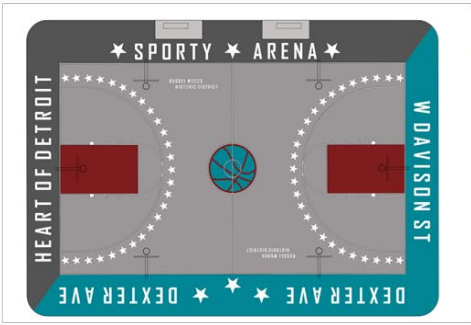
How much of our budget do we want to spend on these existing items and how much should we invest in new?



Skate Park

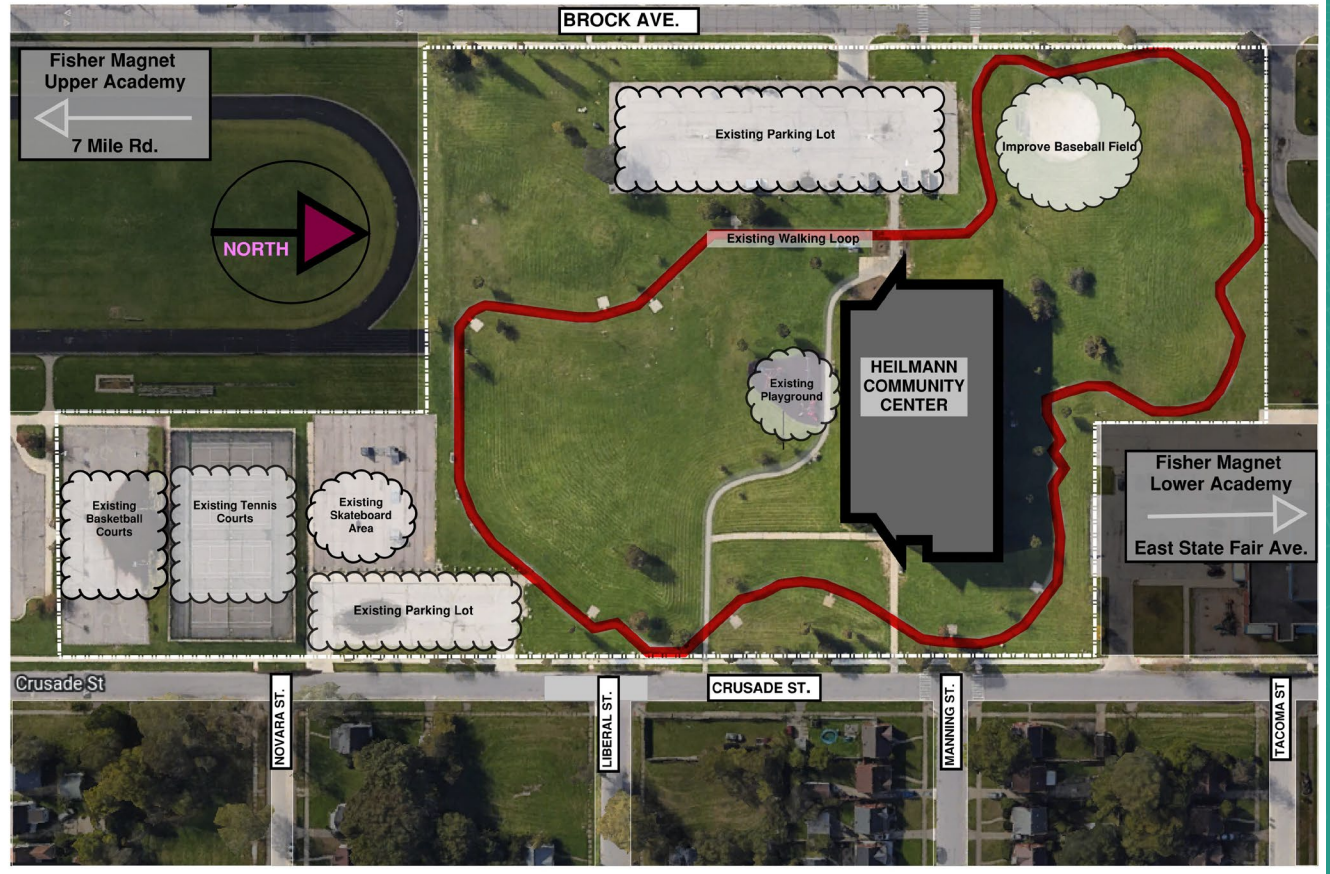


Basketball Court



THE EXISTING LOOP

What kind of updates could the loop use?

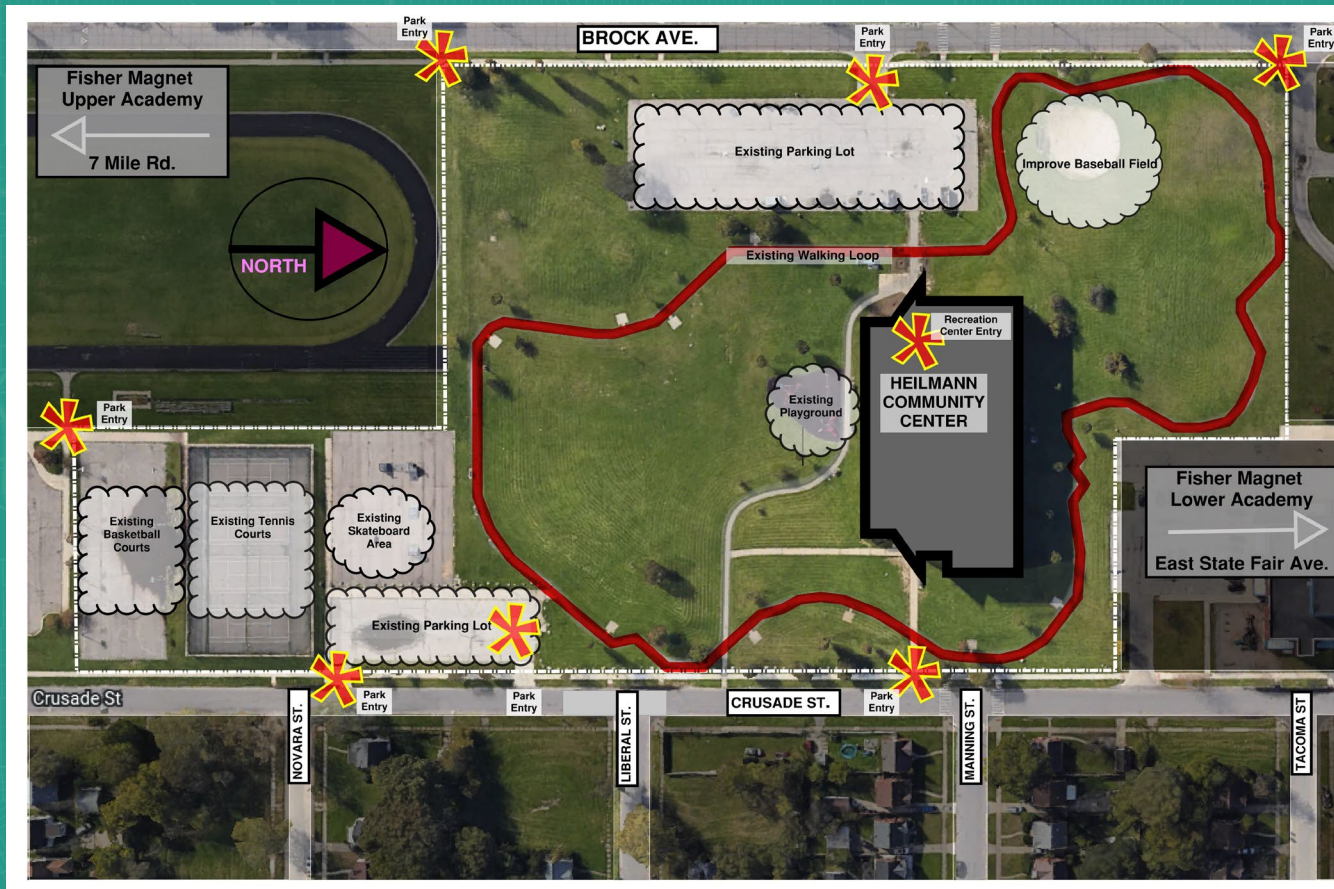


WALKING, BIKING, DRIVING TO THE PARK AND RECREATION CENTER

How do you get to the park?

By car, on-foot, bike?

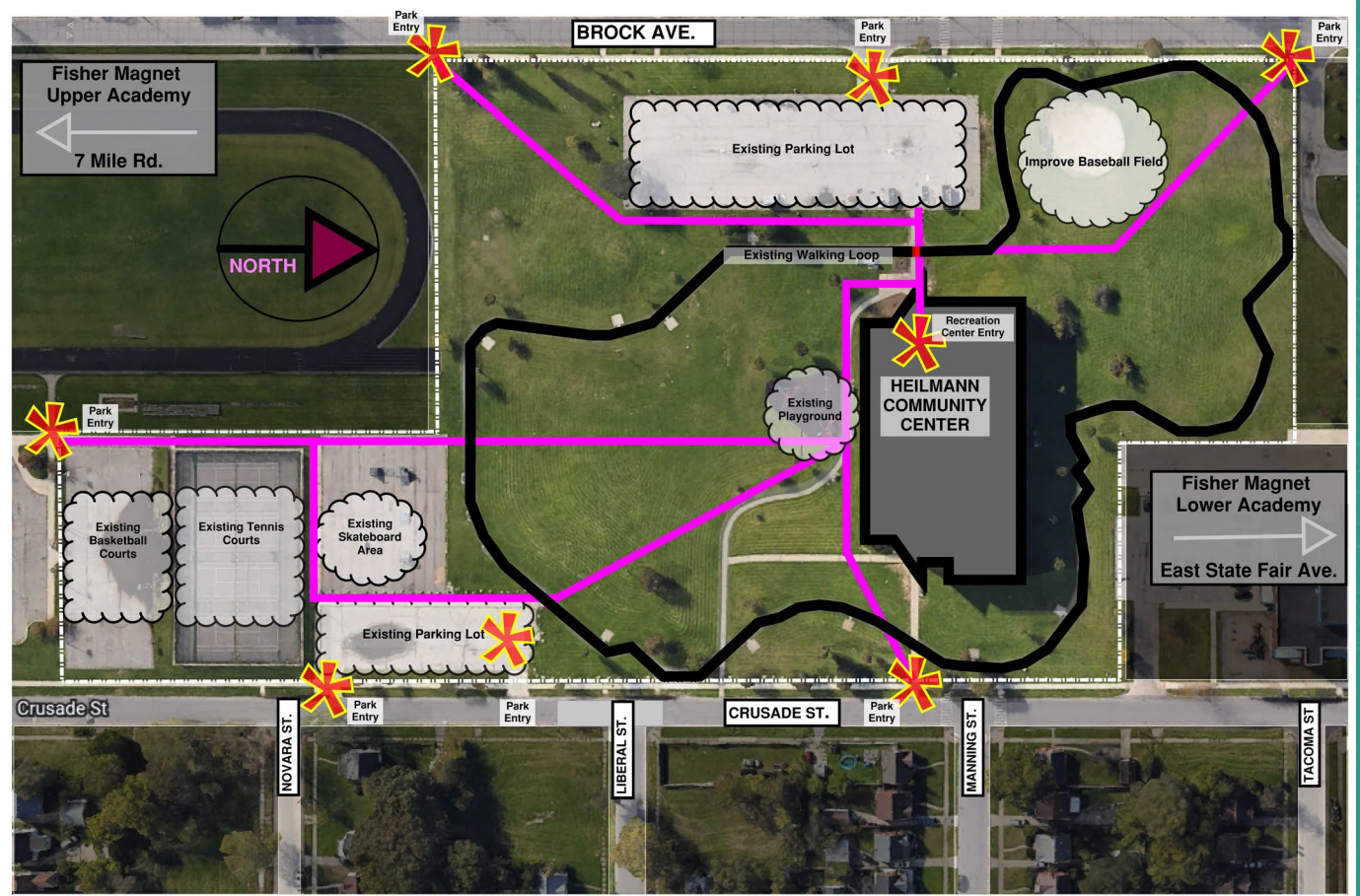
Do you cut through the park to get to the Rec. Center?



ONCE YOU ARRIVE HOW DO YOU CONNECT TO THE RECREATION CENTER OR PARK SPACE

Do you cut across a field?

The pink lines show walking paths that could be improved.

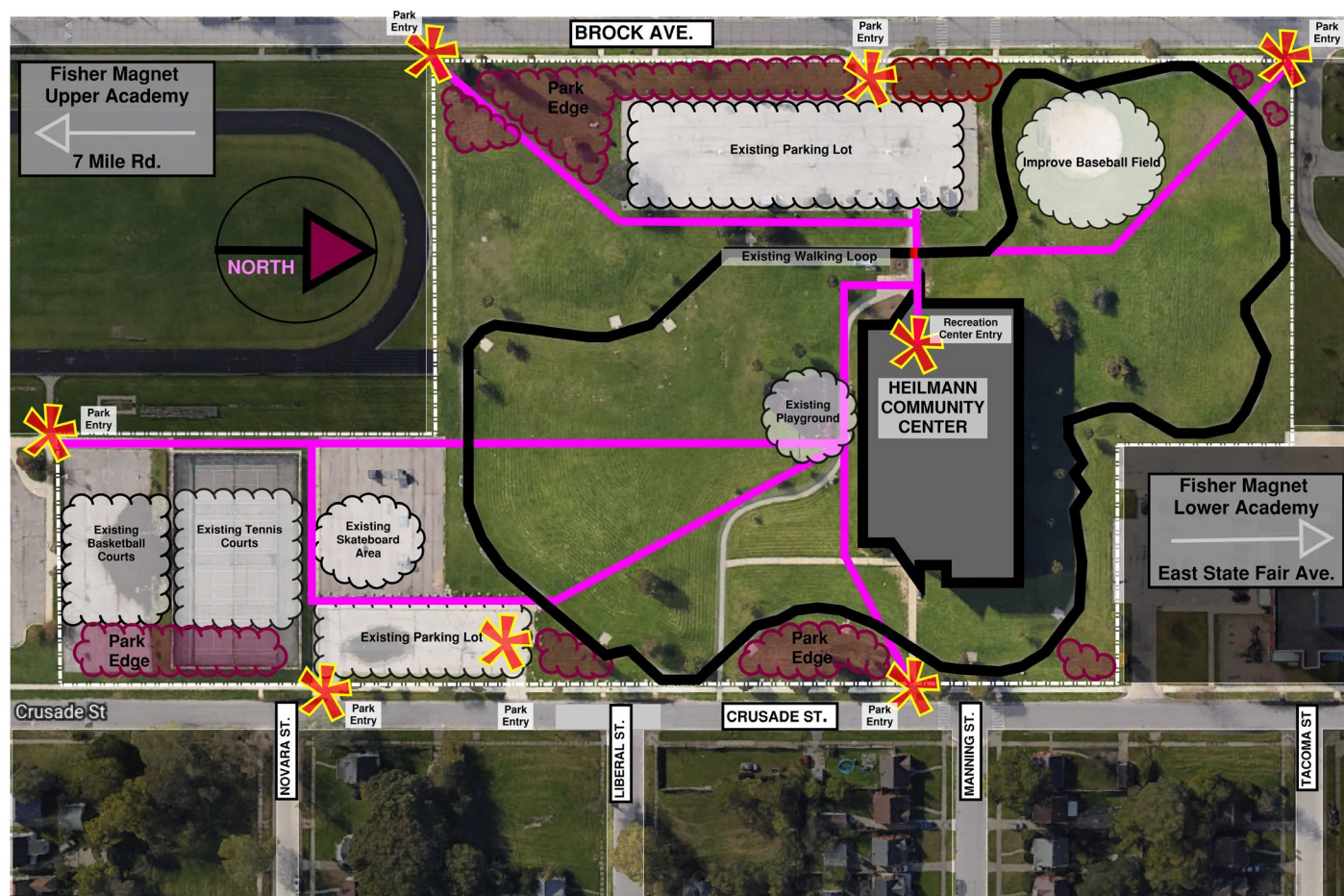


THE PARK EDGE

Park Signs

Boulders to Keep
Vehicles Out

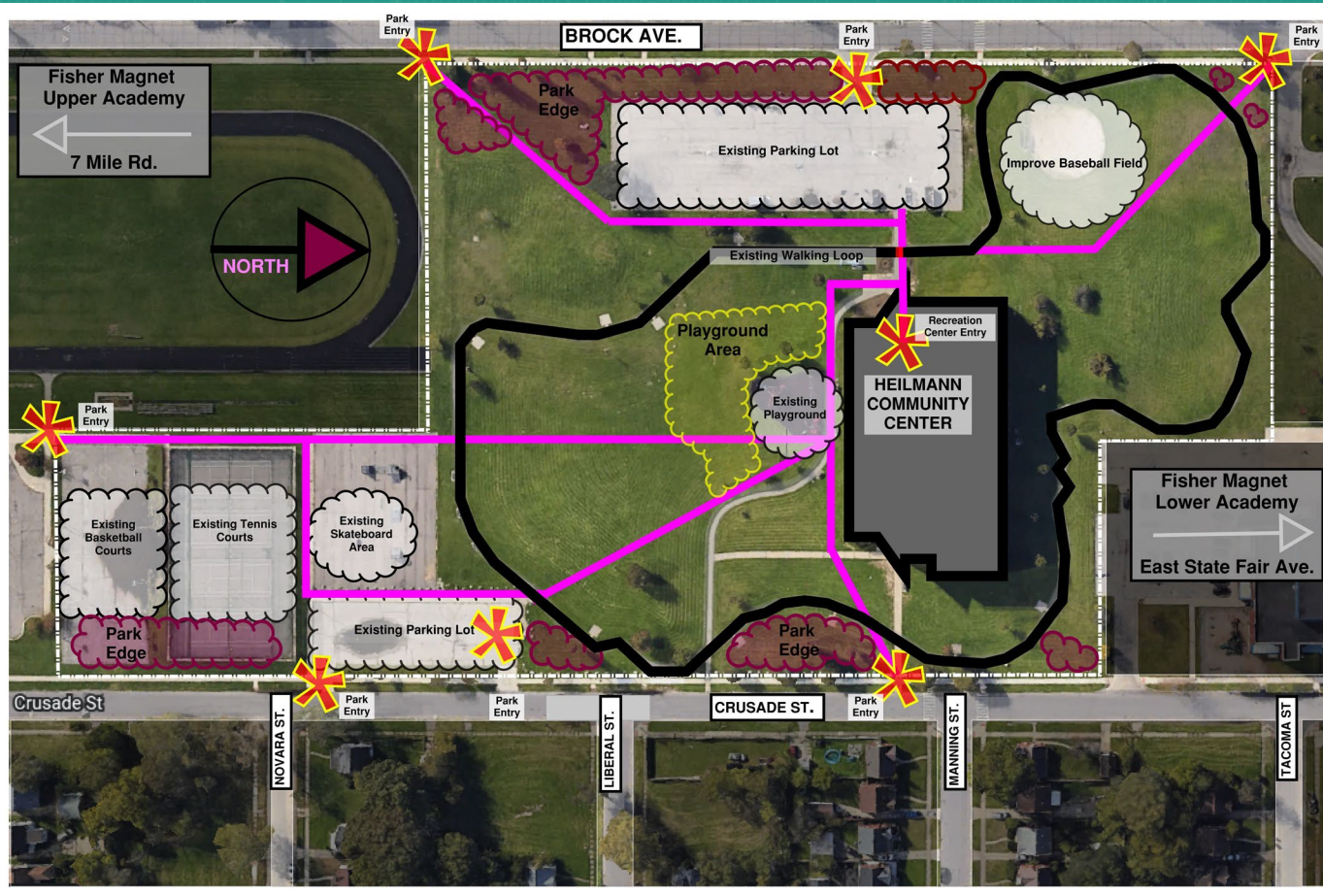
Tree's



Park Edge



IMPROVE EXISTING PLAYGROUND AND EXPAND WITH ADDITIONAL PLAY ITEMS



IMPROVE EXISTING PLAYGROUND AND EXPAND WITH ADDITIONAL PLAY ITEMS



Swings



Stand-alone Elements



Nature Exploration and Play



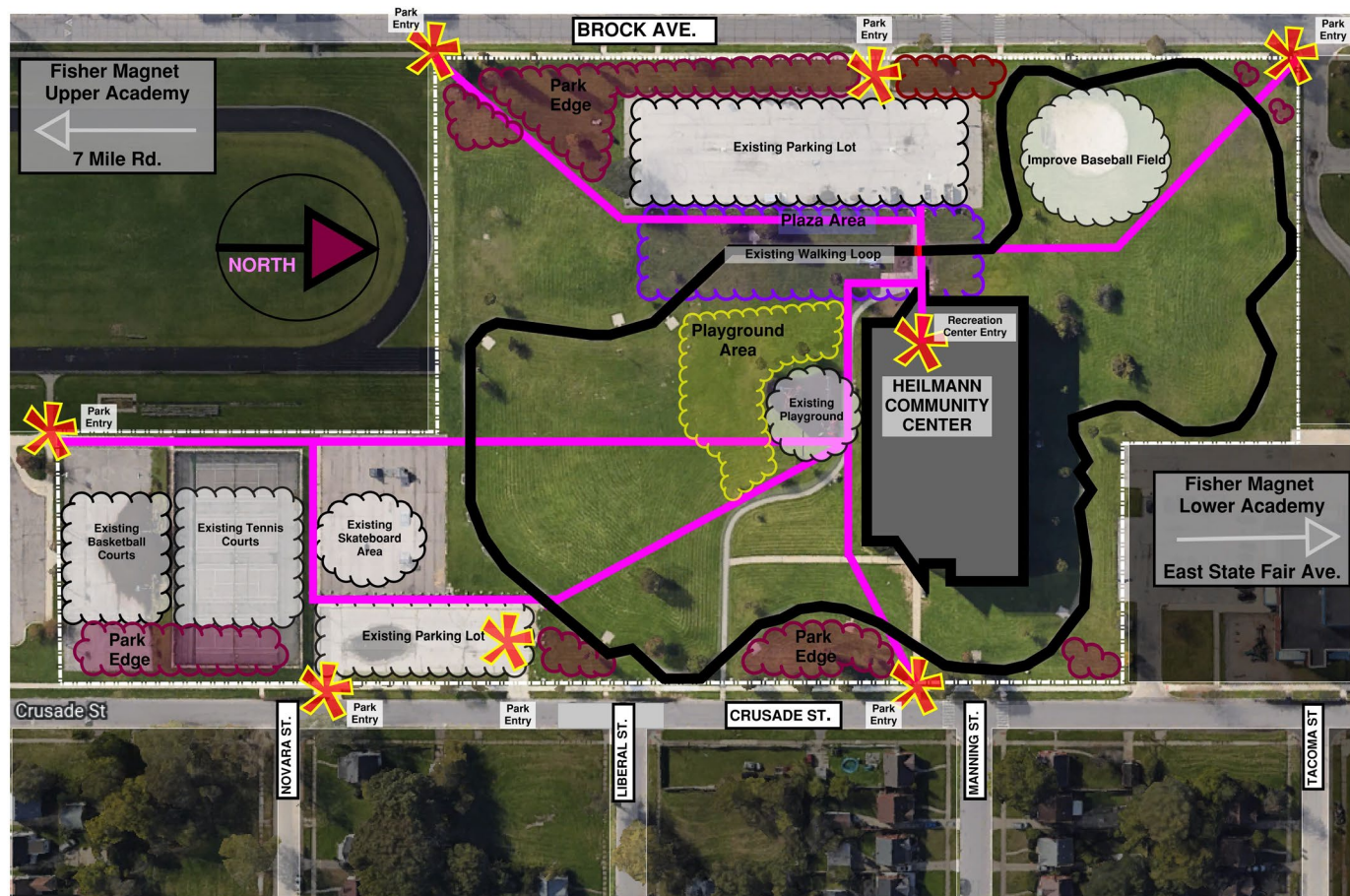
What is a plaza?

A cool place to watch sit.

A space that connects you from the parking lot to the rec. center or park amenities.

A place to wait to get picked up.

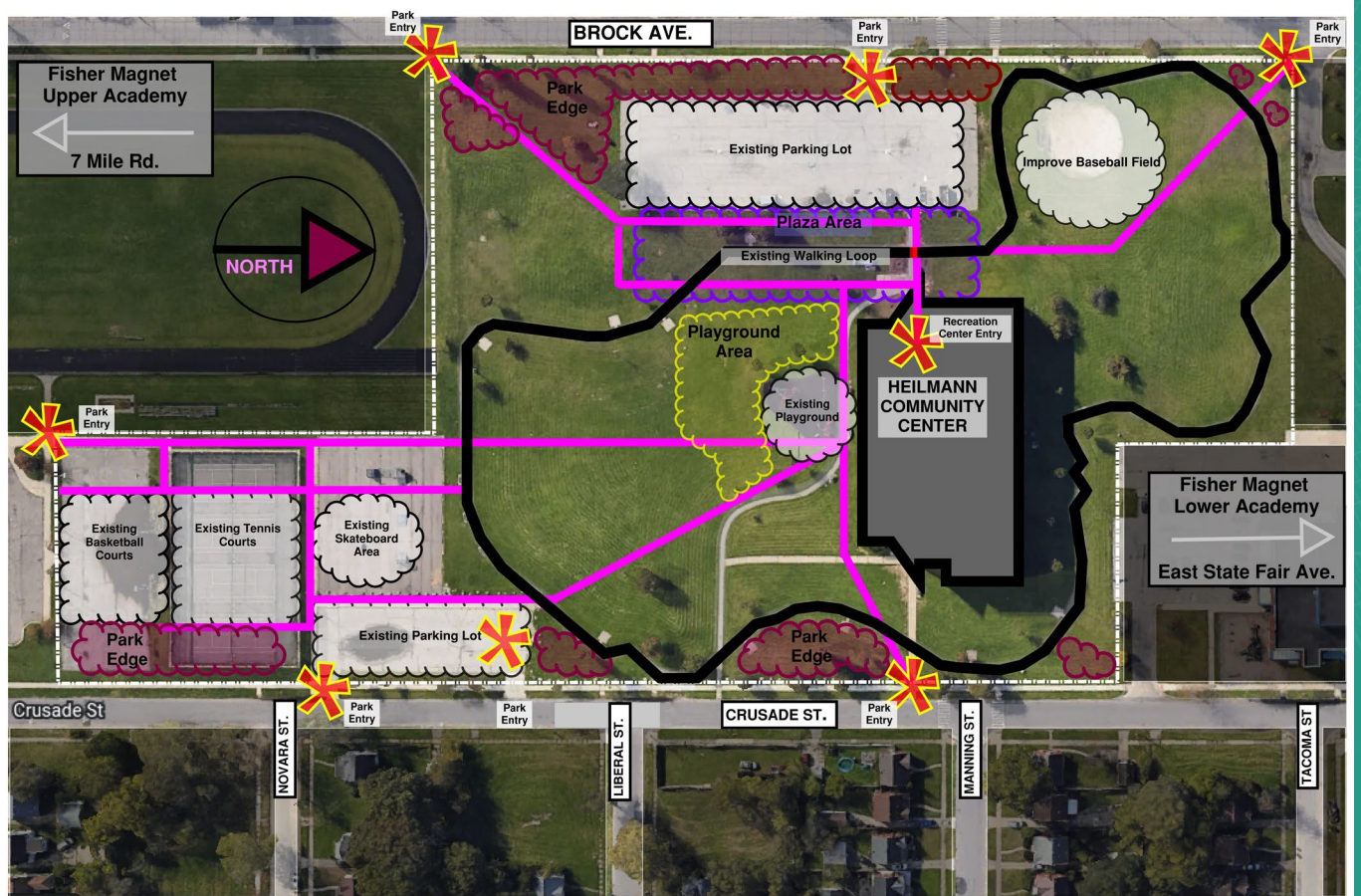
Benches, Trees...



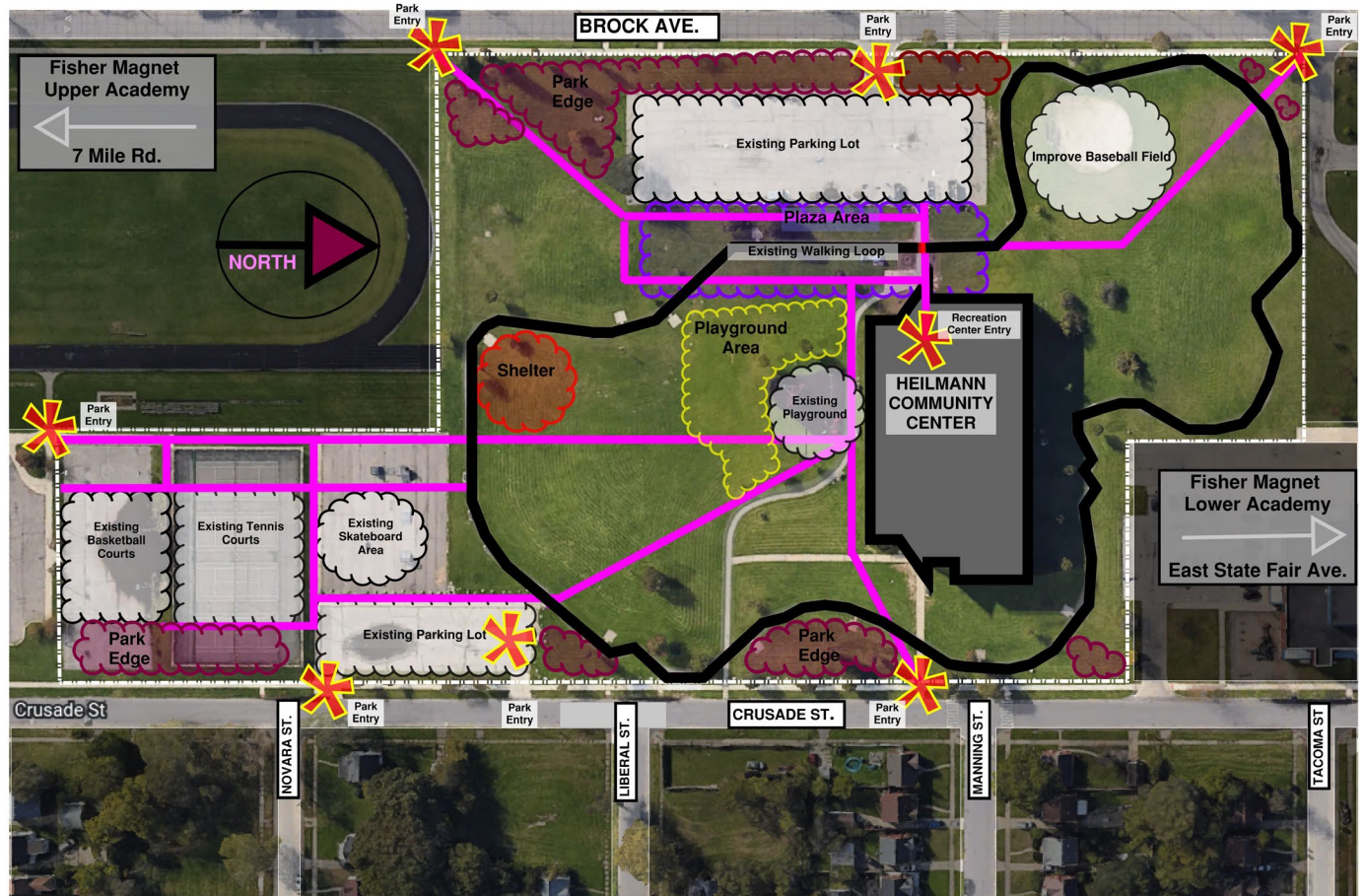
Plaza



Just a Few More Walkways?



Picnic Shelter



Picnic Shelters



Large Picnic Shelter
(8-10 tables)



Open Air Event Shelter

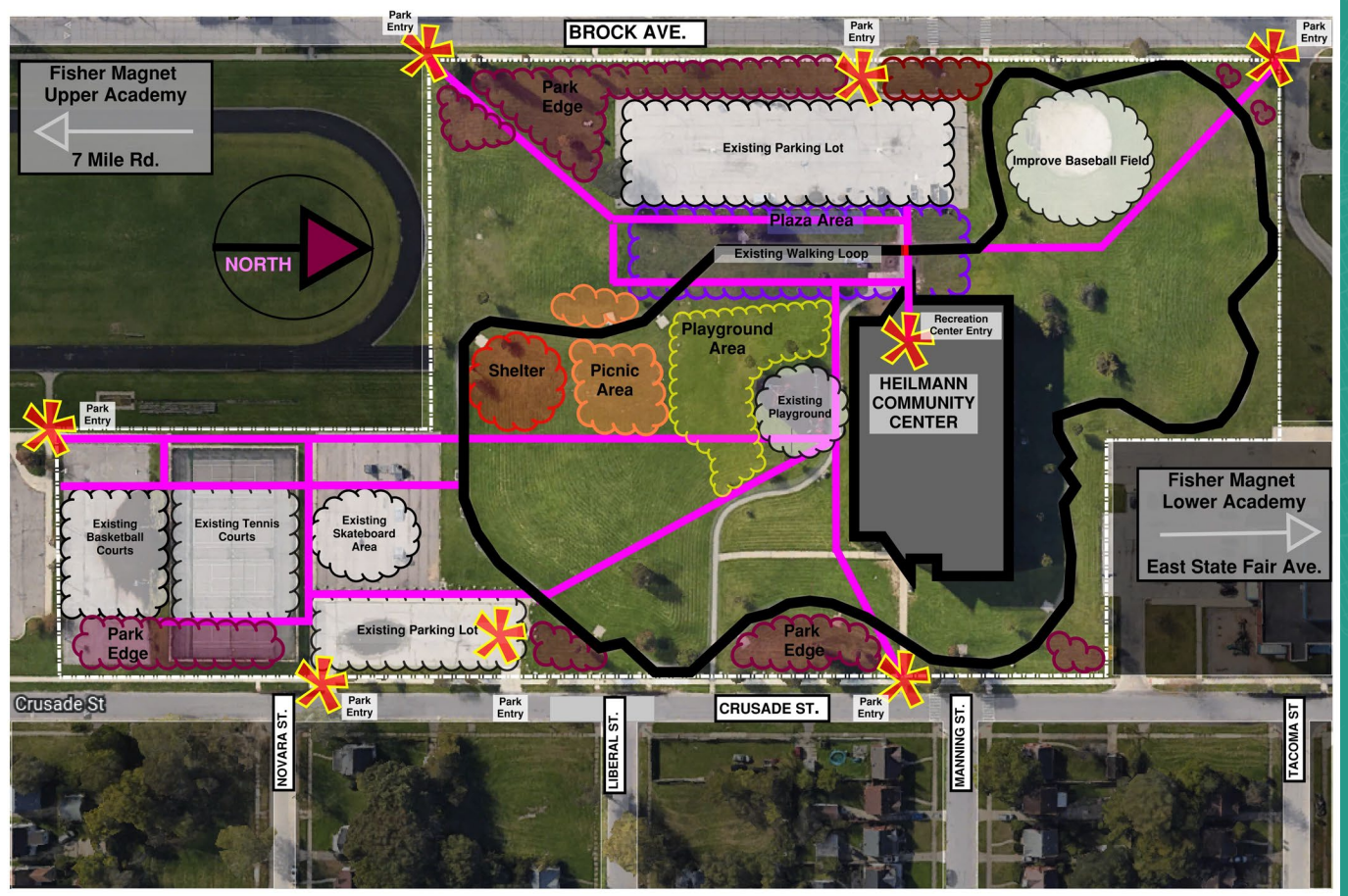


Medium Picnic Shelter
(4-6 tables)



Small Picnic Shelter
(2-3 tables)

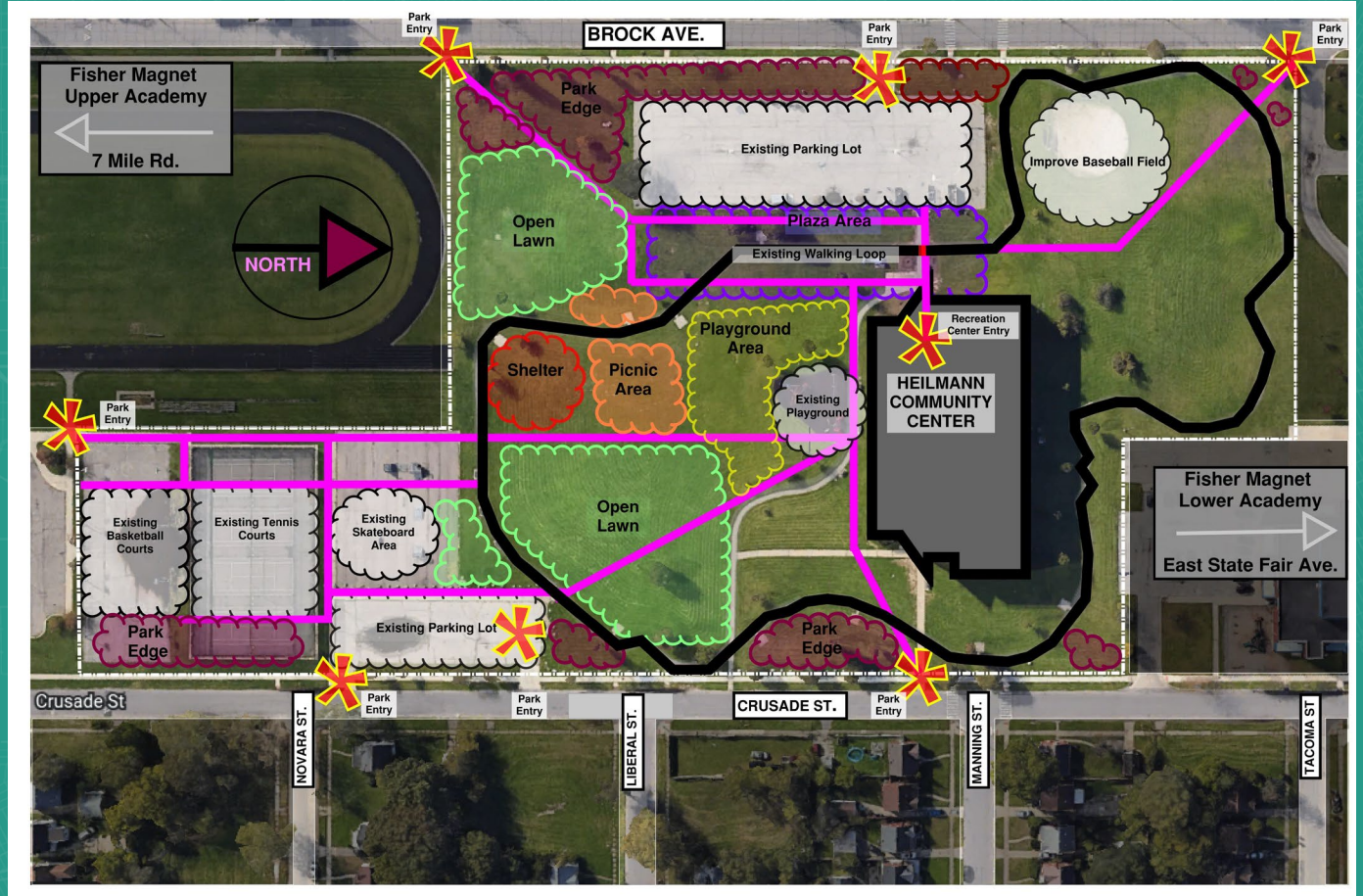
Stand Alone Picnic Areas



Picnic Areas



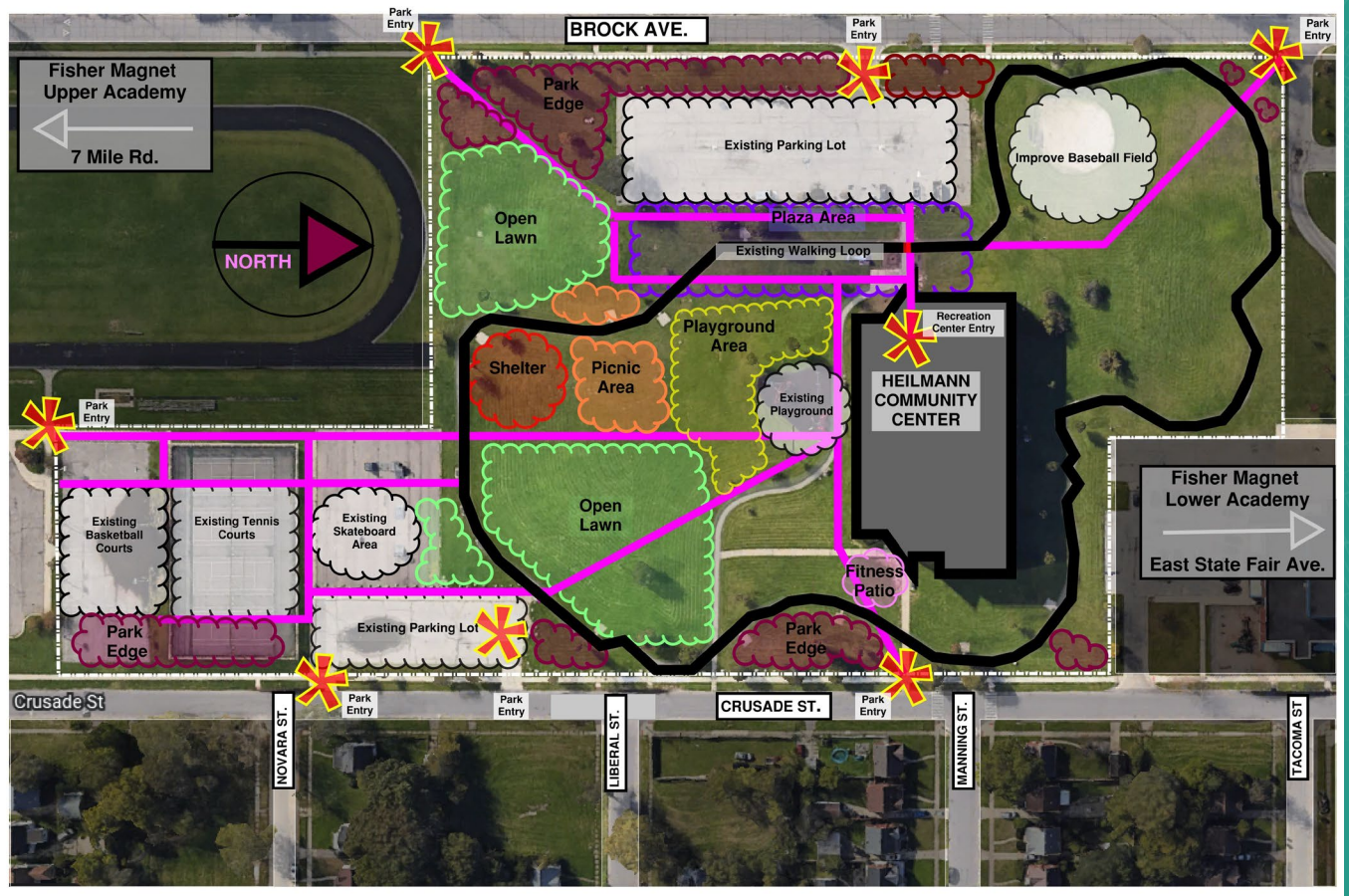
Open Lawn



Open Lawn



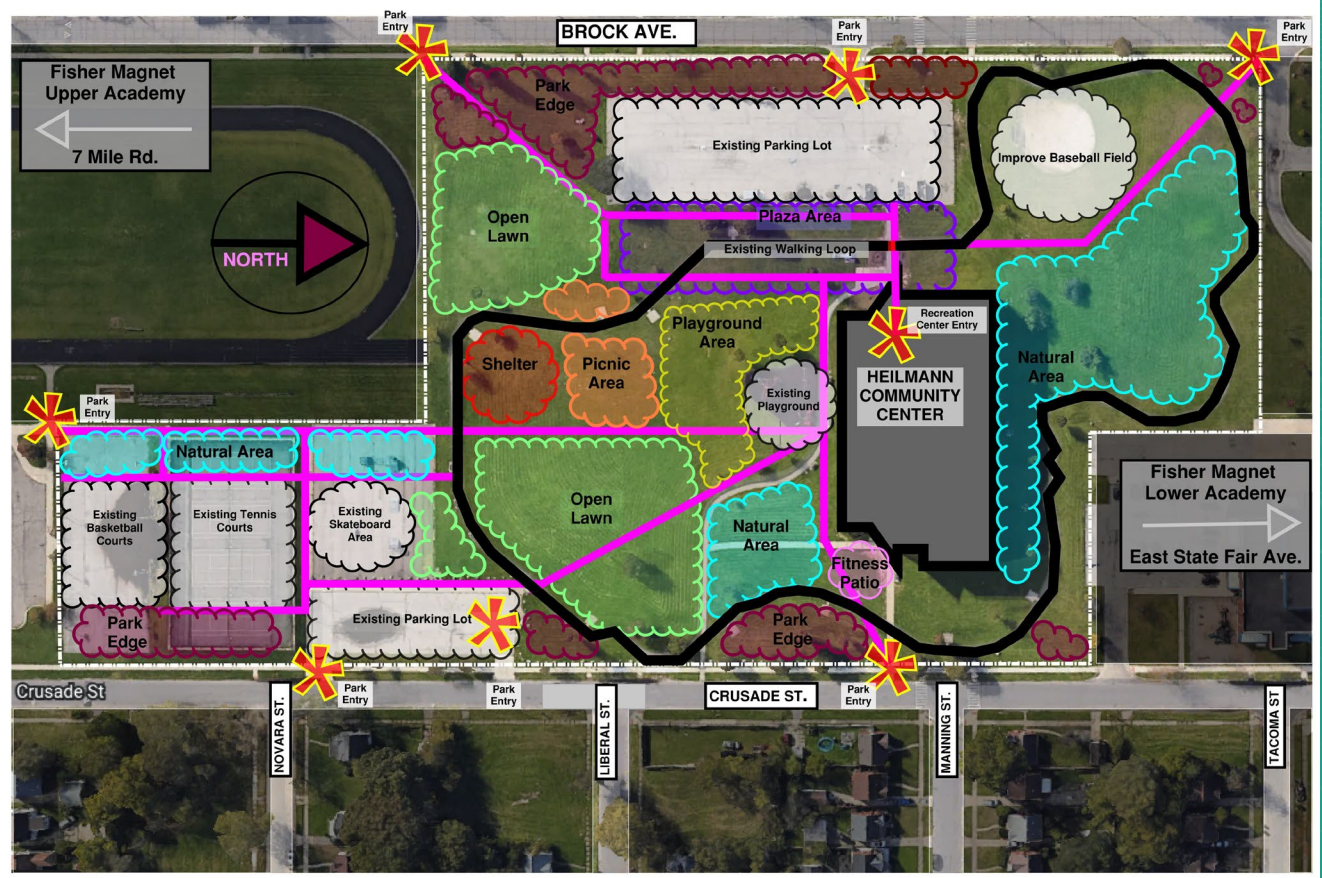
Outdoor Fitness – Fitness Patio



Fitness



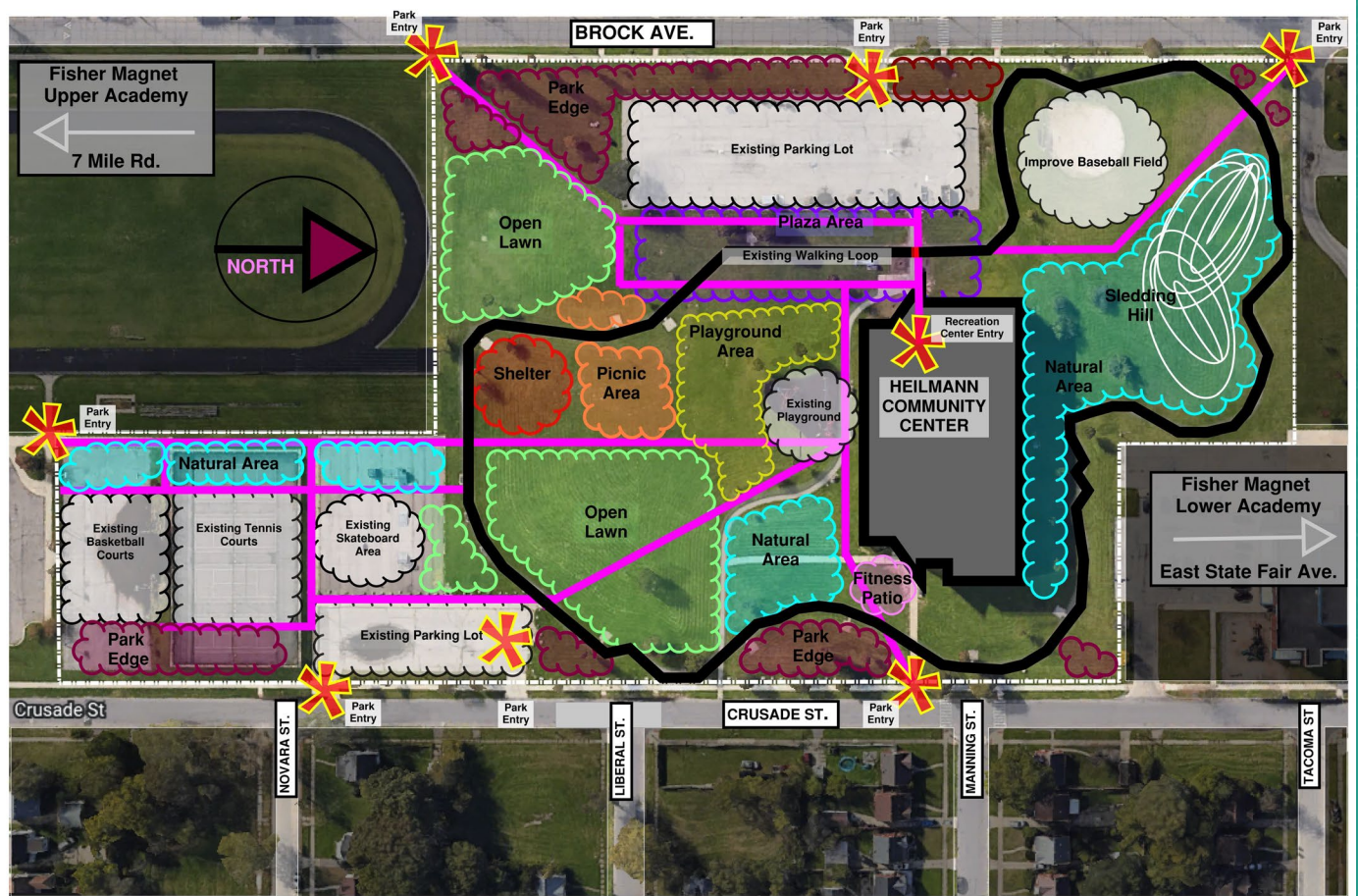
Natural Area and Nature Pockets



Natural Areas and Nature Pockets



Sledding Hill

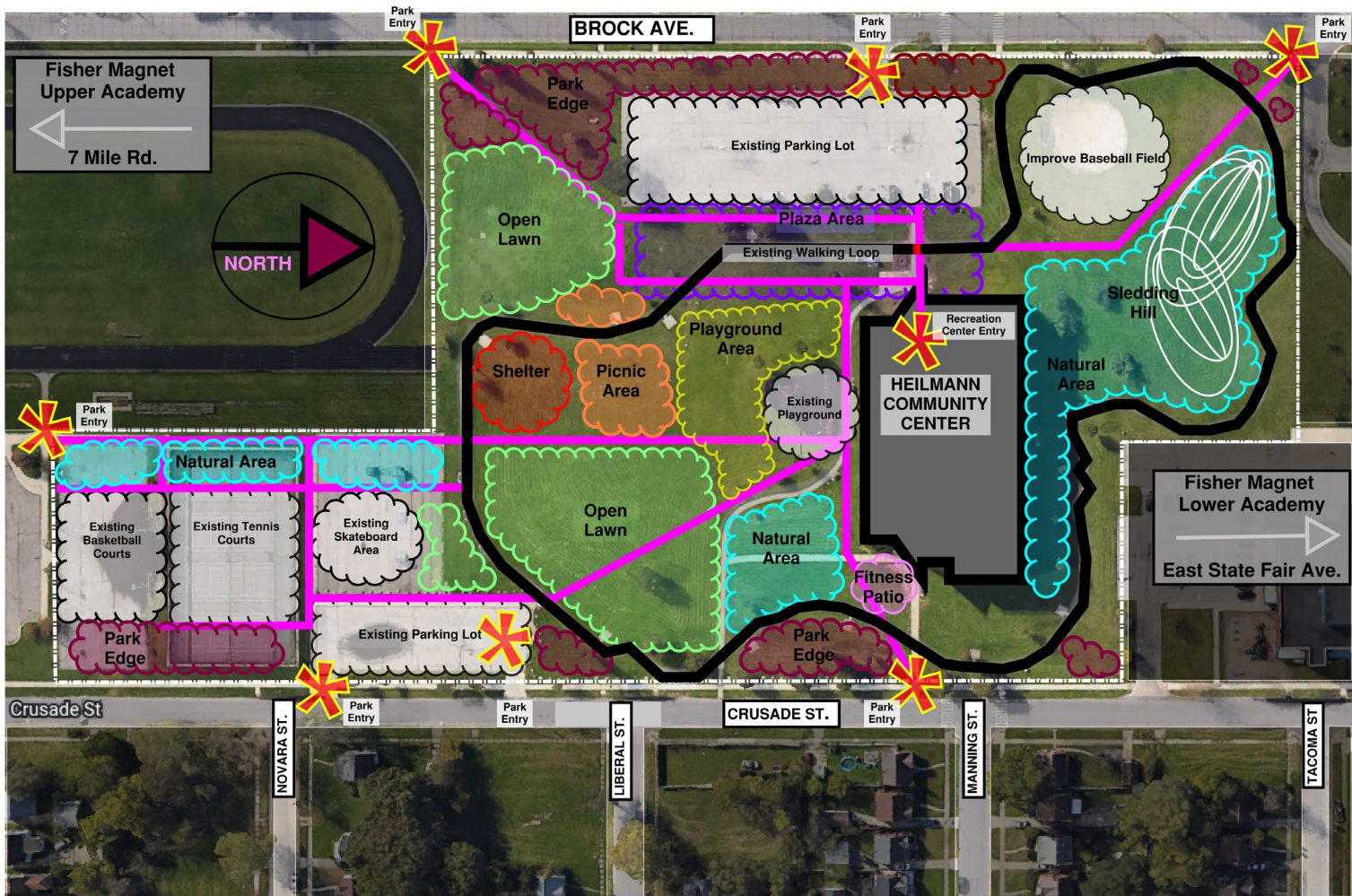


Sledding Hill





Poll and Discussion





Next Steps

Design Studio- Thursday, October 20, 2022

What's Next

- GIVE US YOUR FEEDBACK BEFORE NOVEMBER 21st
- FOCUS GROUPS
- FOLLOW UP MEETING IN EARLY WINTER 2023



TAKE PART
Opportunity Rising



TAKE THE SURVEY!
SCAN BELOW



<https://bit.ly/HeilmannFeedback>

Paper surveys available at
Heilmann Rec Center- 19601 Crusade St

**Shape the future
of Heilmann Park!**

**PLAN
YOUR
PARK**

**Closes November
21st!**

**HEILMANN
FEEDBACK
SURVEY**

Tell us if you **LOVE** the
improvement or if we
should **LEAVE IT** out of the
plan.



Jeff Klein
kleinj@detroitmi.gov

Shamori Whitt
Shamori.Whitt@detroitmi.gov



TAKE PART
Opportunity Rising

