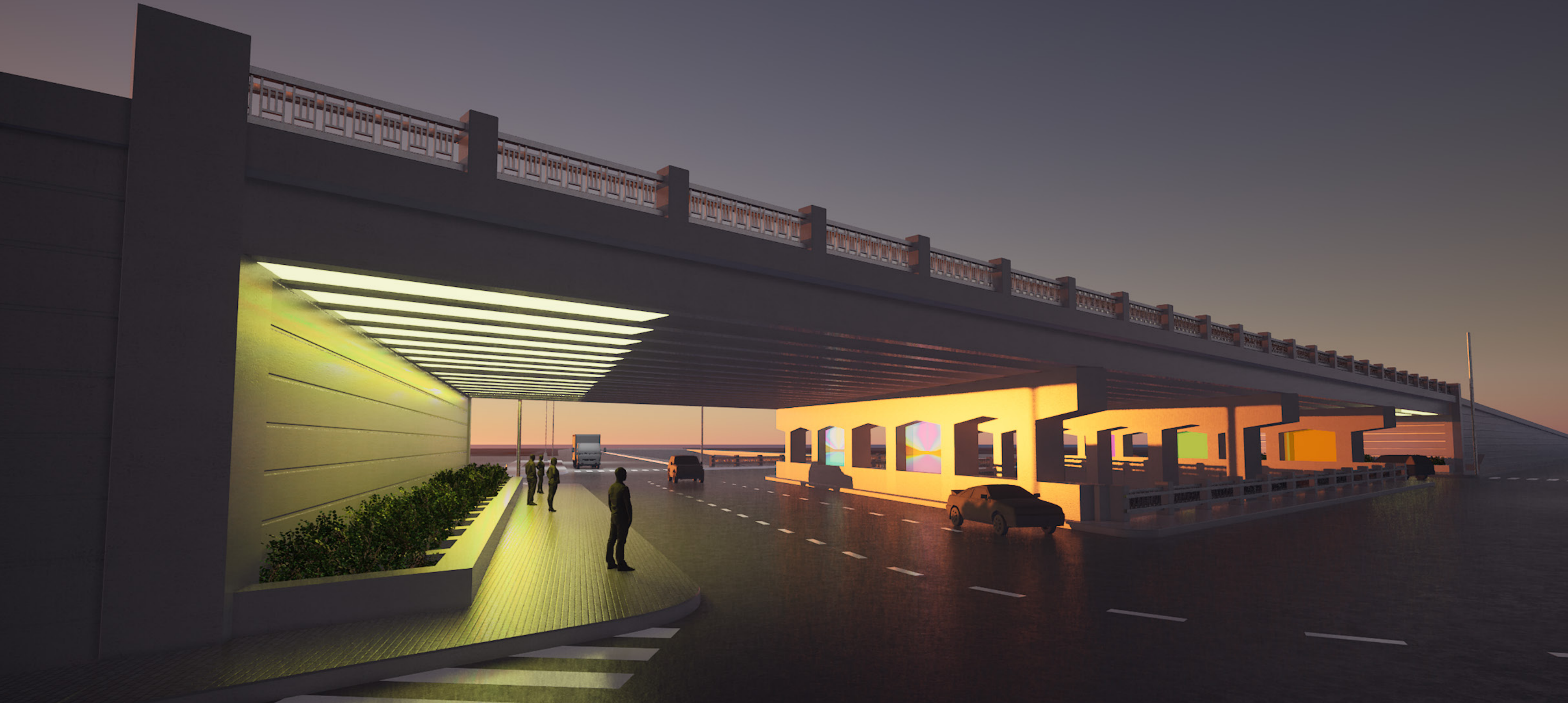


8 MILE @ WOODWARD A Light Gateway



**Community
Presentation**

DEC 03 2020

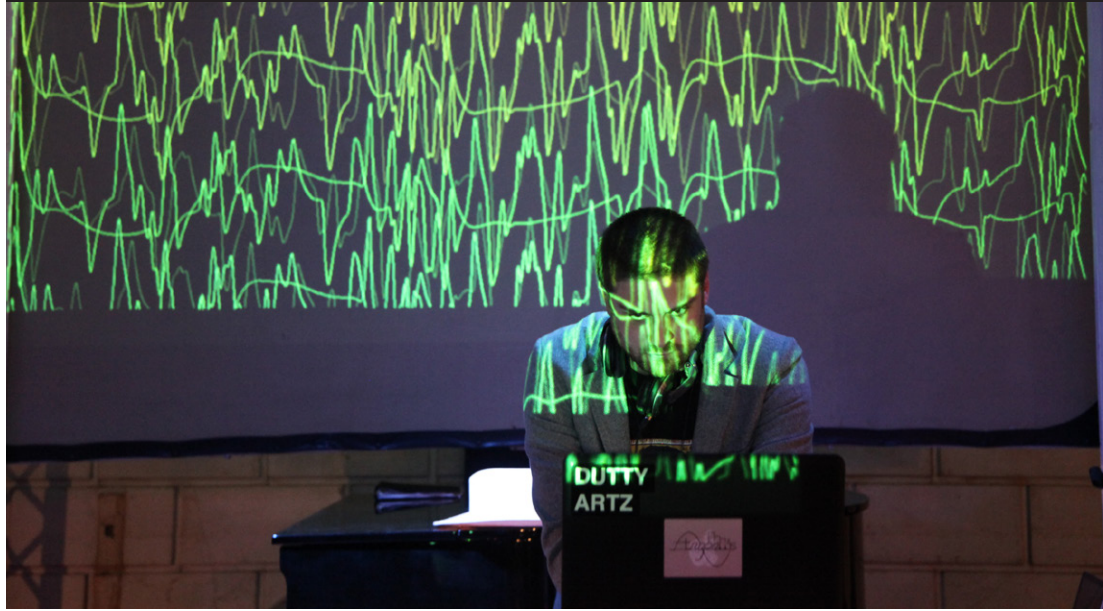
**8 Mile Boulevard
Association &
Stakeholders**

**We Are All Collage
KS Design
Jonathan Turner**

8 MILE @ WOODWARD A Light Gateway

Jonathan Turner with Glasser
CHARGE at The Kitchen, NY, NY
2015, 47:49, live performance, 3 channel video

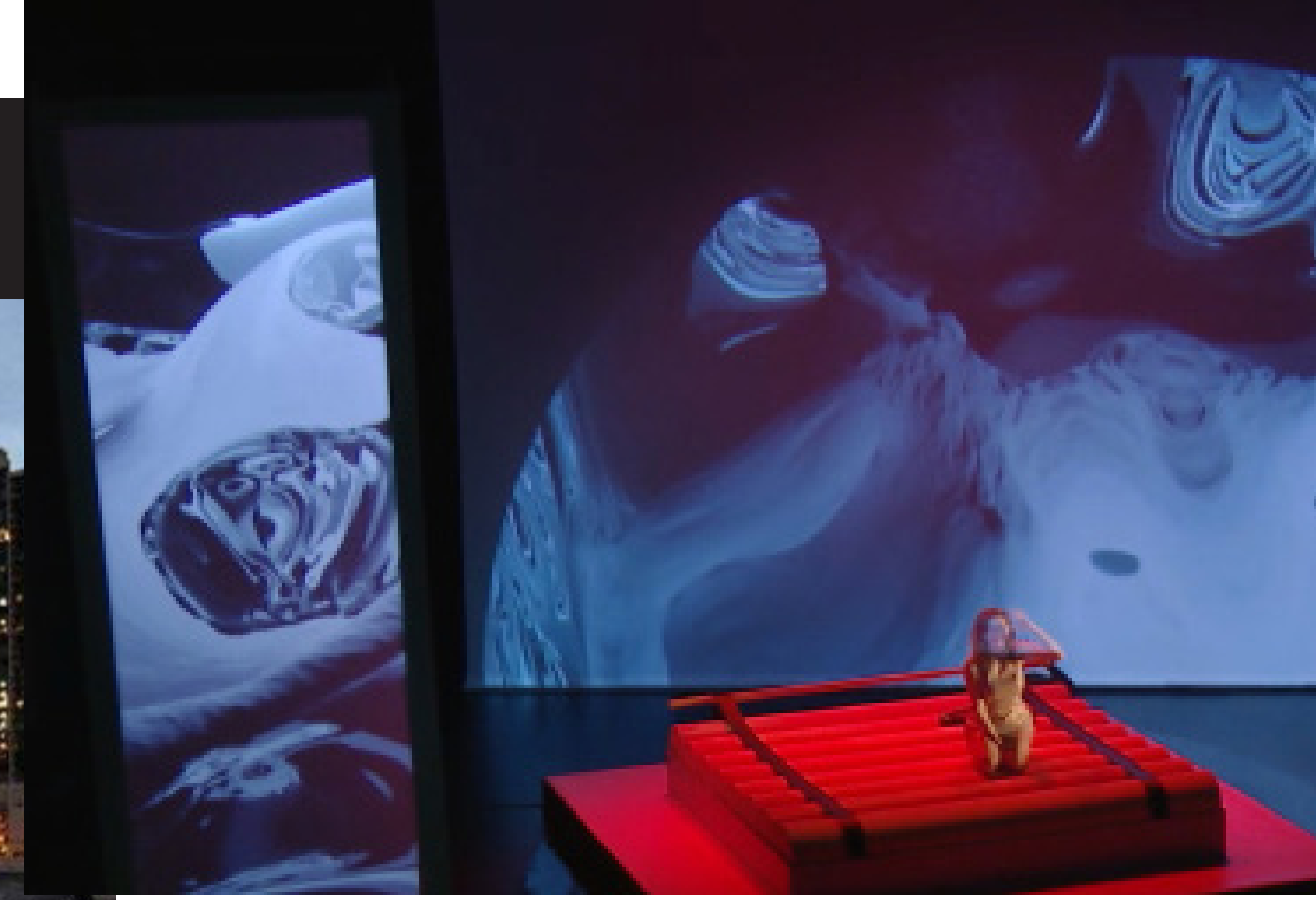
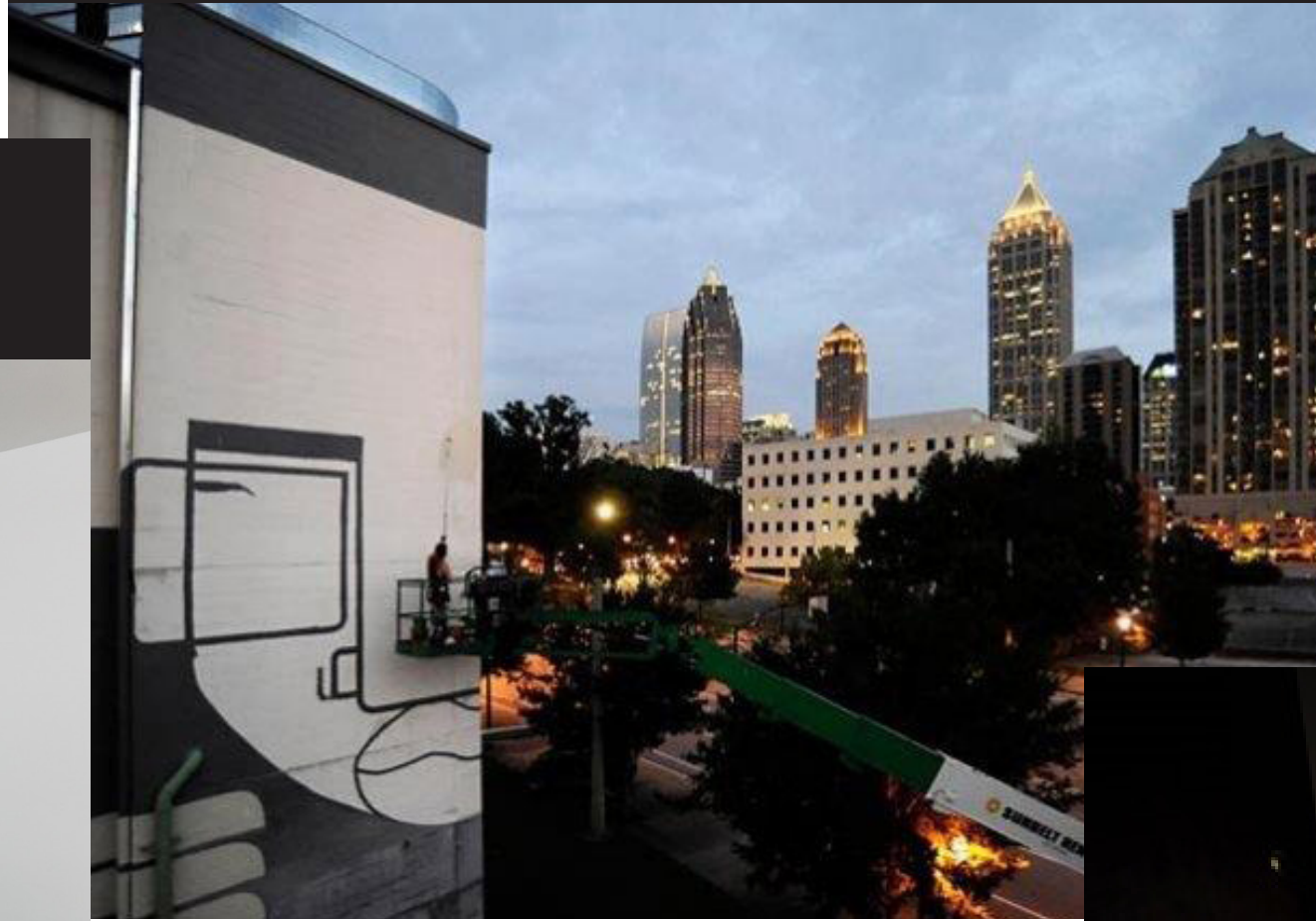
We Are All Collage / The Listening Archive,
Curated Performances
ISSUE Project Room, Brooklyn, NY



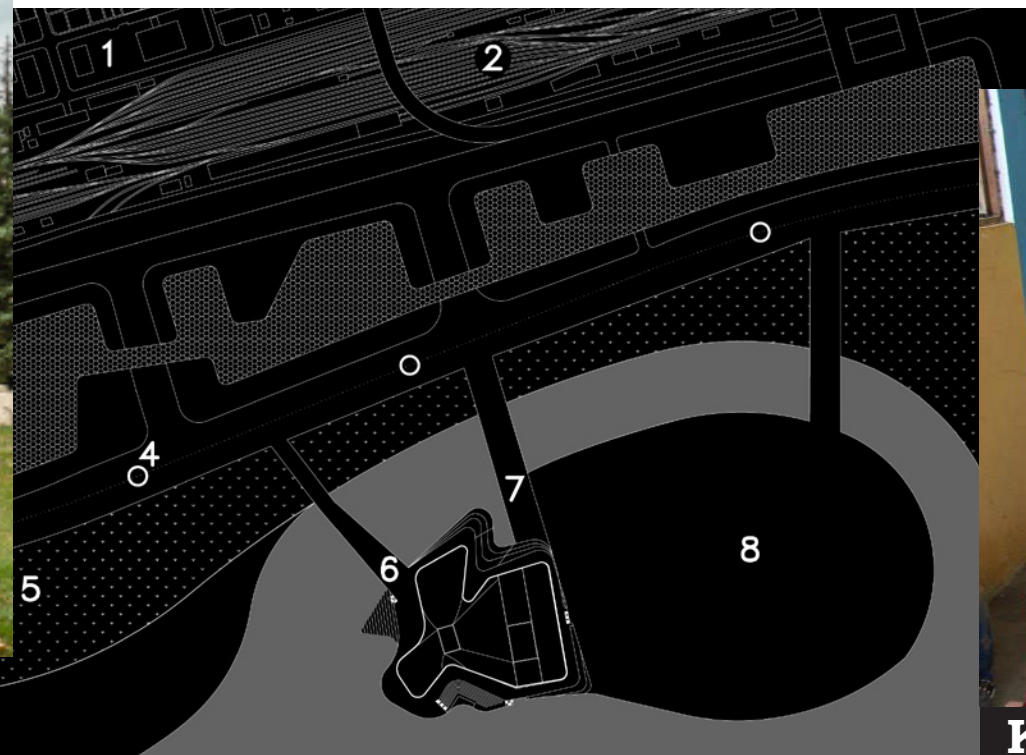
We Are All Collage / The Listening Archive
Exhibition, Curation/Design/Event Planning
MoCAD, Detroit, MI



KS Design / Public Art Installation and Planning
Numerous Sites including: Detroit, MI; Atlanta, GA;
Lynn, MA; Miami, FL; Chattanooga, TN



We Are All Collage / Pallister Playscape
& Conceptual Master Plan
Detroit, Michigan



Jonathan Turner / Yemenwed
WOMAN MERGES W CAR, NO. 3
2010, 14:20, HD Video, 16:9 aspect ratio



KS Design / Leads Public Art Workshops and
Tactical Urbanism Brainstorms
Numerous Sites across US and in Costa Rica

We Are All Collage / Busan Opera House
Arts District Master Plan (Competition)
Busan, Korea



Jonathan Turner commissioned by PIN-UP Magazine
COLLISION—COALESCE @ Philip Johnson Glass House
2010, 14:20, HD Video, 16:9 aspect ratio

Design Team

8 MILE @ WOODWARD **A Light Gateway**

1

Our proposal reimagines 8 Mile @ Woodward as a creative gateway to Detroit and Ferndale. When we think of civic space, we most often think of parks—rarely do we consider roadways or underutilized urban space. Engaging 8 Mile @ Woodward as a new kind of civic space will be forward-looking, as well as inspiring and safer. A site redesign will create more active community engagement, as residents of all ages come together to create a more collective landscape, experience and spirit.

2

We will offer a multilayered infrastructural approach from the urbanistic to the aesthetic to the social.

Primary systems to be improved include:

Lighting
Streetscapes
Crosswalks

Team expertise includes:

Lighting
Art/Curation
Civic Engagement
Landscape
Sound Engineering
Architecture/Urban

3

We will create solutions and policy to help alleviate panhandling and homelessness at the intersection.

Strategies include sharing precedents for

- (a) Support services for homeless including storage of personal belongings
- (b) Opportunities to expand public use of the site through small-scale community-based programming/maintenance

8 MILE @ WOODWARD A Light Gateway

COMMUNITY ENGAGEMENT

The project will engage the community in many ways, which includes:

Creative brainstorming with stakeholders

Musical commissions/performances by local musicians for VR engagement during project development

Project documentation in collaboration with Wayne State University film faculty/students

Gardening/maintenance of landscape by local organizations & fundraising

VIRTUAL/CREATIVE ENGAGEMENT DURING COVID

Working with multimedia and light/sound artist Jonathan Turner, we will transform 8 Mile Boulevard at the tri-level intersection through light.

The site is a place of stopping for few, as well as a liminal space and landmark for many. Yet its geography is significant—it connects communities and jurisdictions to the north and south and to the east and west. We want the site's infrastructure to feel welcoming and generative as a creative space of light. The site improvements will be realized in conjunction with a *virtual replica* of this transportation node as an networked platform

and virtual civic space where stories can accumulate—and where people can congregate online, in dreamlike ways they cannot do in the “real” transportation node.

The online *replica* of Woodward @ 8 Mile will offer new opportunities for community and creative performances, in advance of the finished installation on the “real” site. Turner has developed and tested such interactive spaces as part of his teaching during the Covid-19 pandemic.

Light Concepts

We foregrounded light as a strategy to heighten, enliven and deepen the experience of the site...

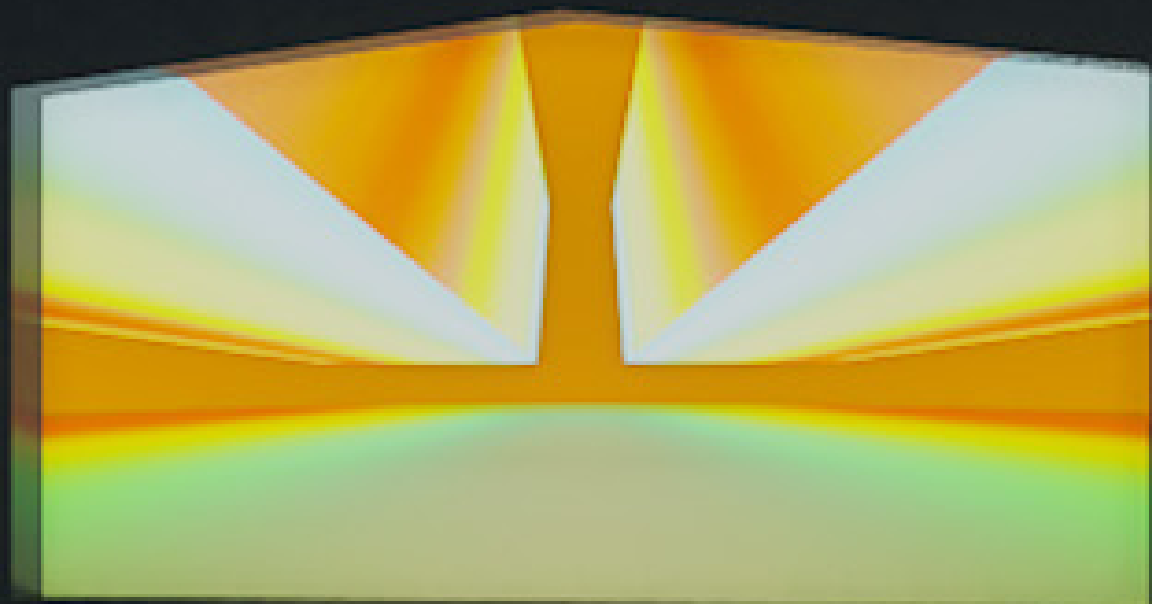
Light is spirit...

Light is life...

Light the way home...

Go towards the light...

Windows



Greenhouse Lights
+ Life-producing

End Walls
+ Higher reflectivity
+ Color remains

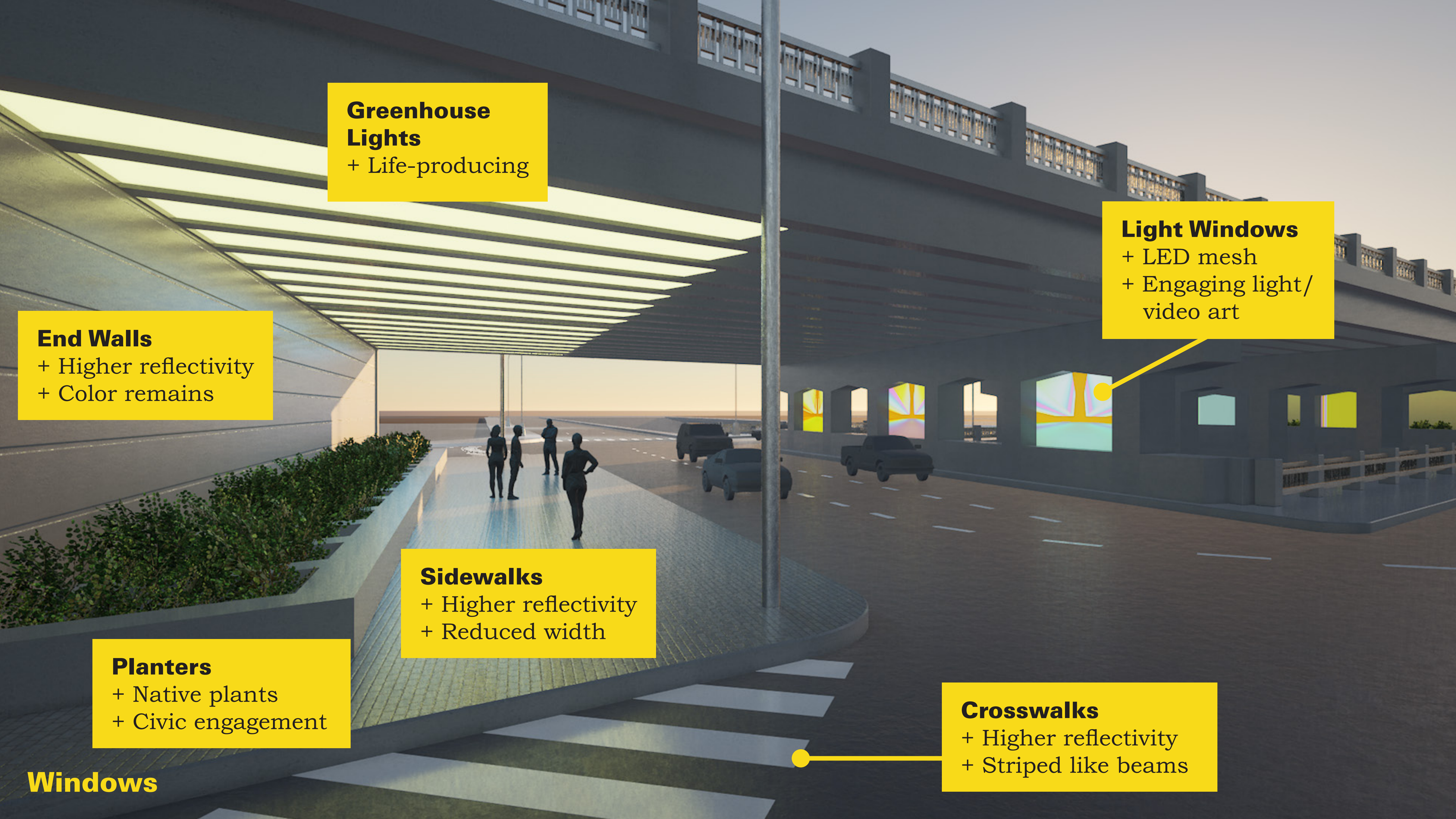
Light Windows
+ LED mesh
+ Engaging light/
video art

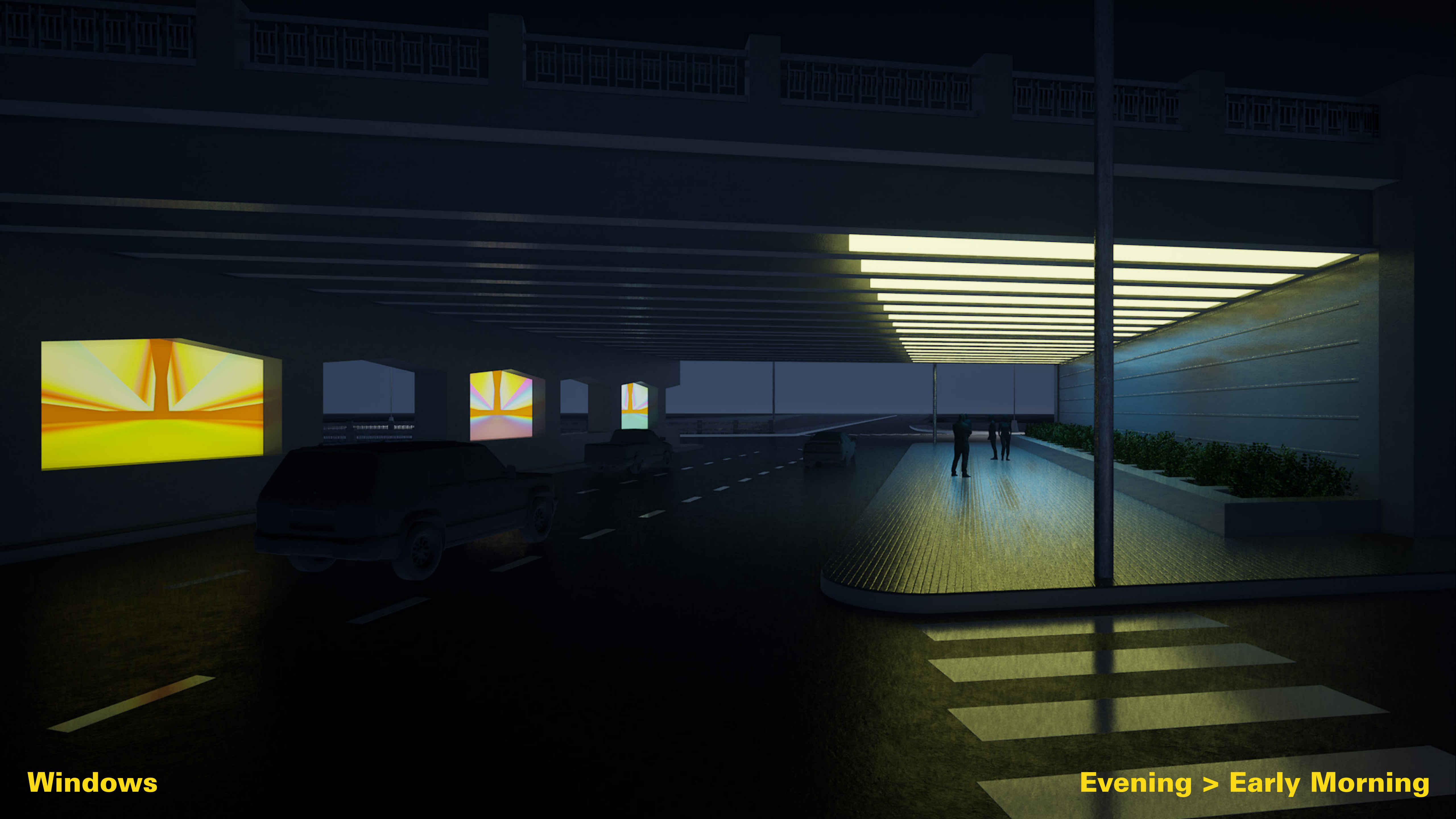
Sidewalks
+ Higher reflectivity
+ Reduced width

Planters
+ Native plants
+ Civic engagement

Crosswalks
+ Higher reflectivity
+ Striped like beams

Windows





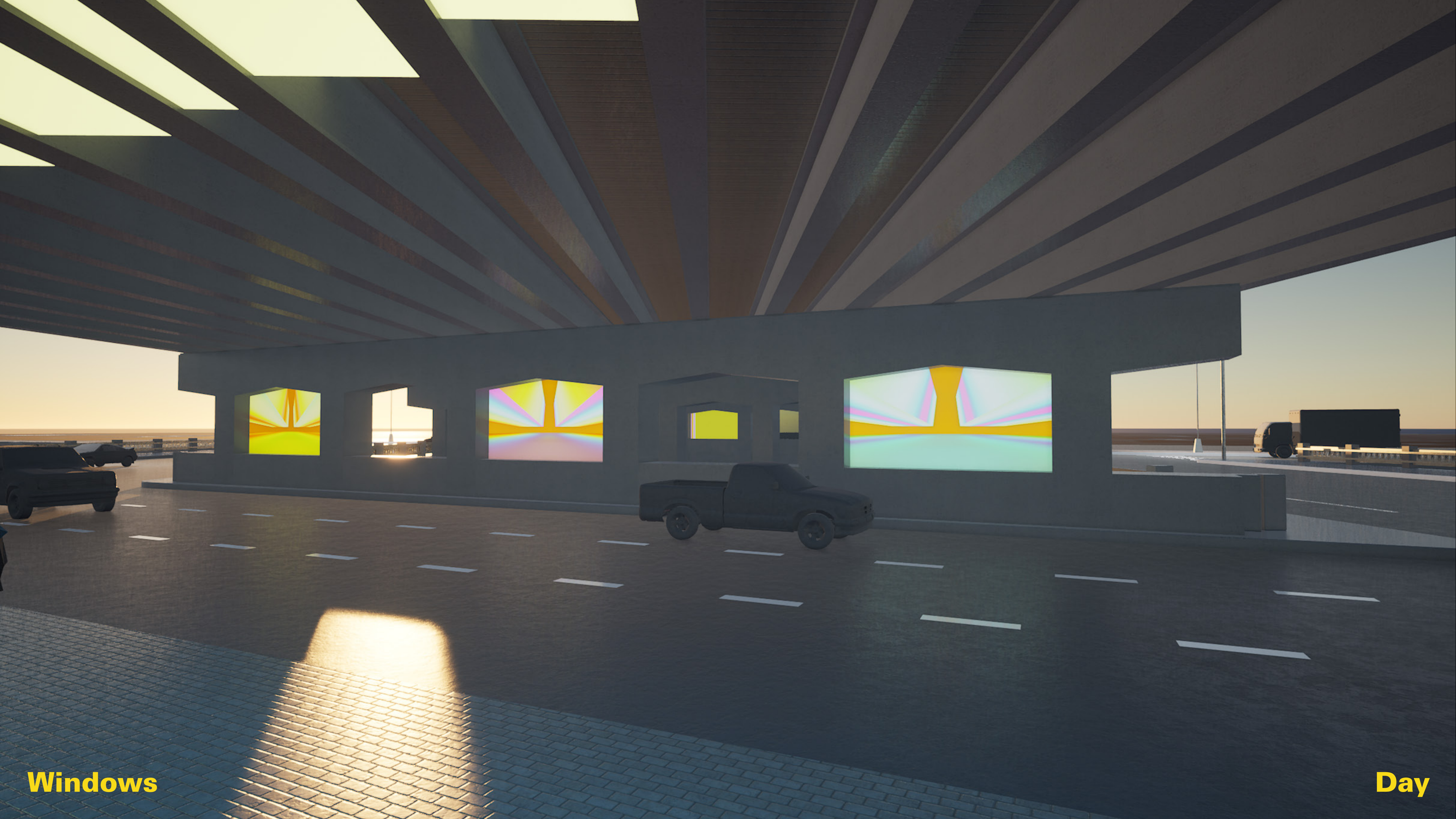
Windows

Evening > Early Morning



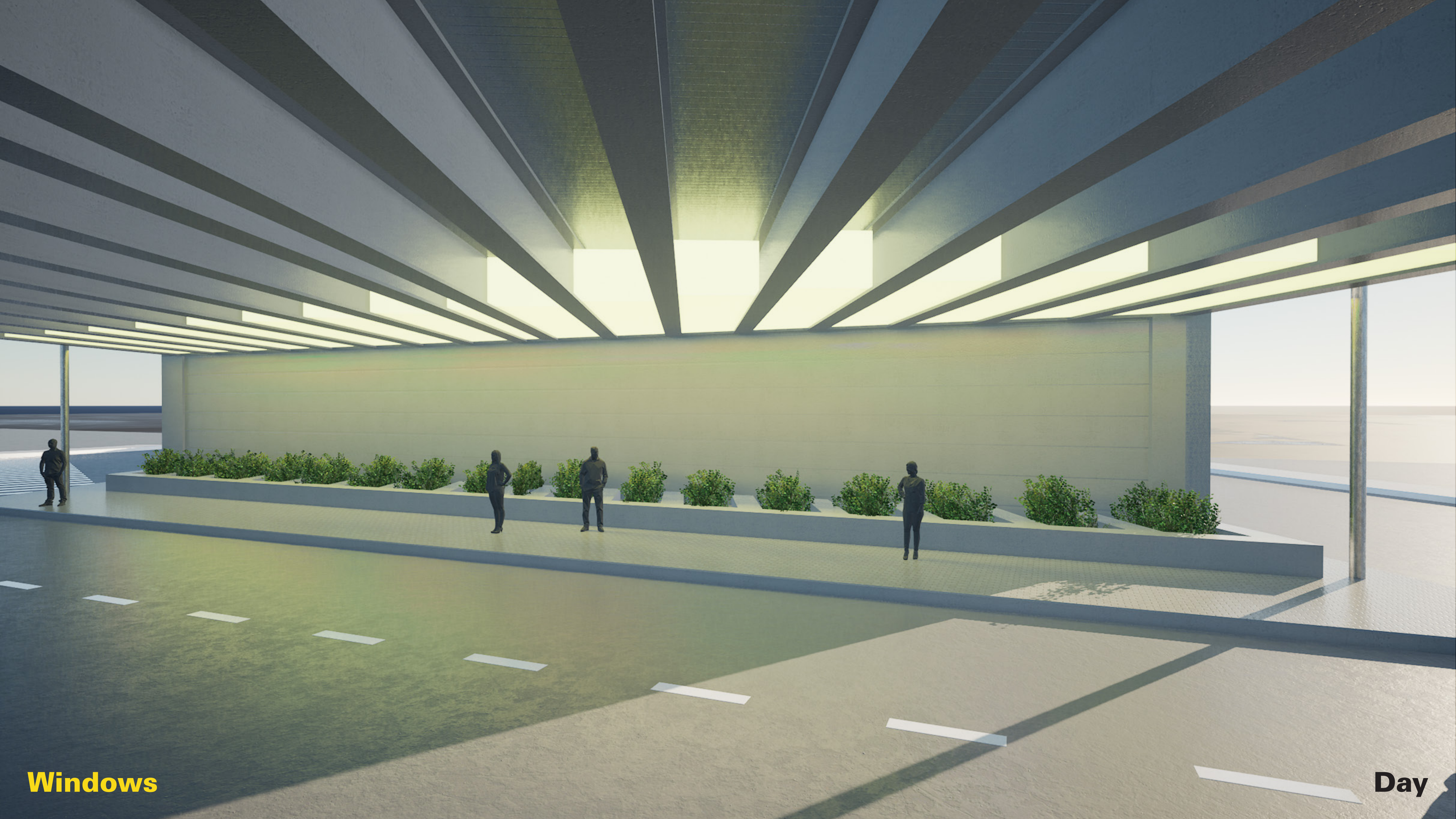
Windows

Evening > Early Morning



Windows

Day



Windows

Day



Windows

Sunset



Windows

Sunset



(Play) Video