

LIGHTING GENERAL NOTES

- POLE BASES SHALL HAVE A 3' CLEARANCE TO ROADWAYS AND CAR PARKING WHEN INSTALLED BEHIND THE CURB, AND 12' CLEARANCE TO TRAILER PARKING.
- REFER TO LIGHTING CONTROL SCHEDULE ON DWG. E680 FOR SEQUENCE OF OPERATION.
- PROVIDE RELAY PANELS FOR CONTROL OF EXTERIOR LIGHTING. SEE DWG. E301A - E301F FOR RELAY PANEL LOCATIONS. COORDINATE LIGHT FIXTURE CONTROL PROGRAMMING WITH OWNER.
- EXISTING SITE LIGHTING SHALL REMAIN. EXTEND EXISTING CIRCUITS AS REQUIRED TO NEAREST NEW LIGHTING PANELBOARD. CONDUIT AND WIRE SIZING SHALL MATCH EXISTING.

LIGHTING DRAWING NOTES

ELECTRICAL - SYMBOL LIST

SYMBOL	DESCRIPTION
[Symbol]	25' POLE MOUNTED LUMINAIRE
[Symbol]	8' POLE MOUNTED LUMINAIRE
[Symbol]	24"x24"x24" ELECTRICAL PULL BOX
[Symbol]	12"x24"x24" ELECTRICAL HAND HOLE
[Symbol]	UNDERGROUND CONDUIT AND WIRE
[Symbol]	BOLLARD

FEEDER SCHEDULE

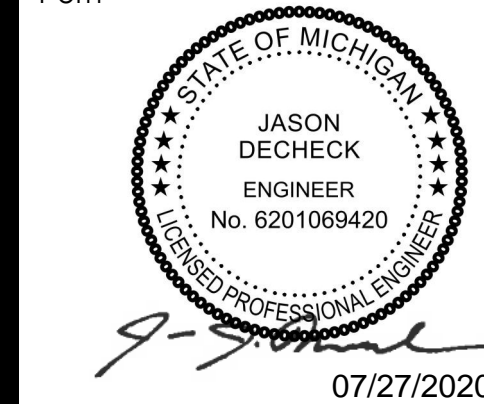
FEEDER #	NO. OF CONDUITS	SIZE OF CONDUIT	NO. & SIZE OF CONDUCTORS IN EACH CONDUIT (U.O.N.)
A	1	1 1/4"	3#8 & 1#8 & 1#8G
B	1	1 1/4"	2#8 & 1#8 & 1#8G
C	1	1 1/4"	1#8 & 1#8 & 1#8G
D	1	2"	2 SETS OF 3#8 & 1#8 & 1#8G
E	1	2 1/2"	3 SETS OF 3#8 & 1#8 & 1#8G
F	1	3"	4 SETS OF 3#8 & 1#8 & 1#8G



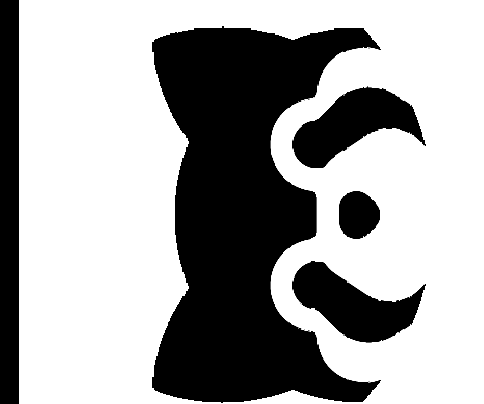
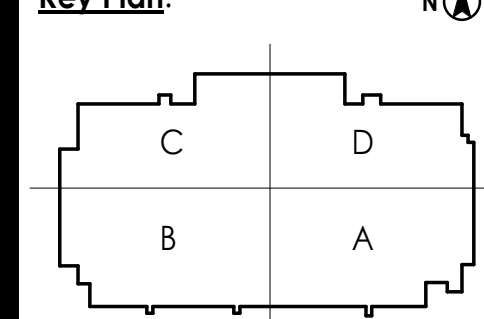
Consultant

NO.	DATE	REVISION

Permit/Seal



Key Plan



Client/Project  
Hillwood Development Company, Inc.  
PROJECT PANDA - FULFILLMENT CENTER

Project No.: 218011567  
Scale: As indicated  
DATE: 06/28/20  
Title  
ELECTRICAL SITE PLAN - LIGHTING WEST

Revision:  
Drawing No.

E101A

