

# COLOR SYSTEM E

**ASSOCIATED ARCHITECTURAL STYLES:** (14) PRAIRIE, (15) BUNGALOW

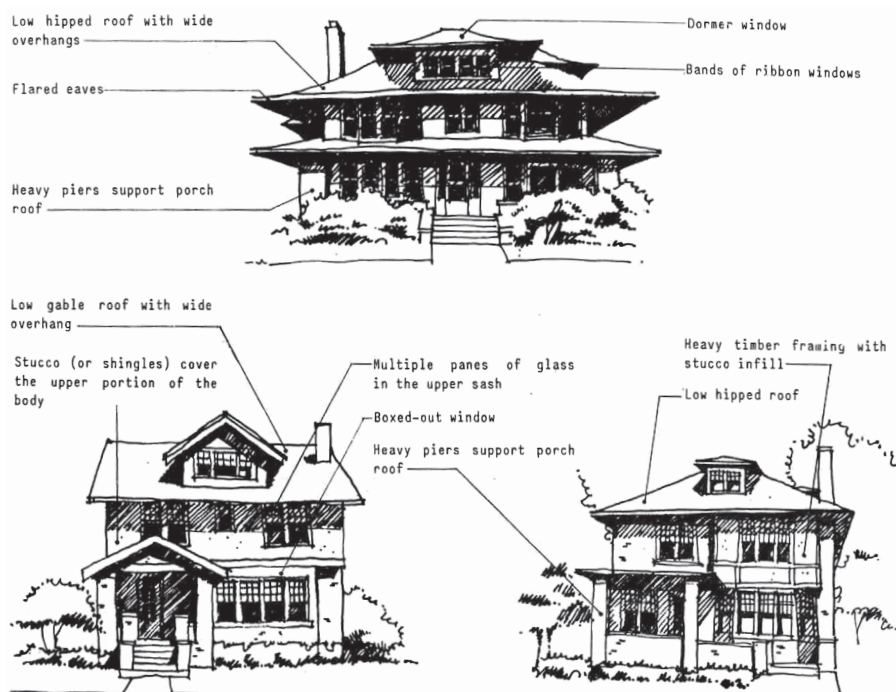
The Prairie School houses with their Neo-Georgian and Chicago School Vernacular spin-offs and the ubiquitous Bungalow Style, all more or less partake of the same color theory as the post-1900 English Revival houses. Both the Prairie School and the Bungalow houses, however, followed a trend toward the lighter colors introduced later in the century. If the owner wished to follow Color System D, he would certainly be historically correct in so doing, however, both Prairie and Bungalow Style houses permit a wider range of choice.

Those Neo-Georgian Vernacular houses that are touched by the Prairie Style (low hip roofs with side overhanging eaves, ribbon windows, a change of materials from the first to the second floors) should not be painted with the Colonial color palette as their name might suggest. Just as the Prairie details might have been grafted onto what is essentially a 4-square box, so the colors of the Prairie Style should be used.

Stucco houses of these styles might be painted in grays, yellows, browns, or when used only for the second floor which is stuccoed above a first floor of another material, one of two oranges. However, stark white was rarely used for Prairie or Bungalow (or for that matter Arts and Crafts) houses.

The heavy timber framing and shingles occasionally used on Prairie or Bungalow Style houses should be painted or stained a dark color to give what one early twentieth-century manufacturer called "the weathered idea of the old bungalow which gained its beauty largely by leaving the unprotected lumber to be exposed to the weather."

It is in the choice of trim colors that there is the greatest freedom, for the use of whites, grays, soft greens, browns, and yellows are all acceptable. Keeping in mind the need to provide color contrast between the trim and any shingles or stucco and half-timbering, (the stucco color should also be different than the half-timbering), grays, yellows, browns, greens and oranges would be appropriate trim colors. For houses of this type, one Detroit manufacturer suggested that "green is by far the most popular color for shutters, though in many instances they are painted to correspond to the body or trimmings of the house." Sash is "usually painted black, white, ivy green or deep rich colors such as copper browns.... If desired, one of the same shades may be used that is employed for the body of the house."



# COLOR SYSTEM E

## ACCEPTABLE COLOR COMBINATIONS \*MS = MUNSELL STANDARD

BODY	TRIM	SASH	SHUTTERS
Stucco/Siding: Any system E color <b>EXCEPT</b> A:7, A:8, A:9, B:19  Use E:2 & E:3 on second floor only above another material	Any System E color to contrast body color	Match trim color or match body color or A:9, B:18, B:19	Match trim color, match body color, or A:8
Shingles/Heavy Timber: Stained or painted A:9, B:1, B:2, B:5, B:6, B:7, B:8, B:11, B:12, B:13, B:14, B:18	Any System E color to contrast body color	Match trim color or match body color or A:9, B:18, B:19	Match trim color, match body color, or A:8
Existing brick or stone			



**A:1 Yellowish Gray**  
MS: 2.5Y 8/2



**A:2 Light Olive Gray**  
MS: 10Y 6/1



**A:3 Light Yellow**  
MS: 5Y 8/6



**A:4 Pale Yellow**  
MS: 2.5Y 8.5/4



**A:5 Grayish Yellow**  
MS: 2.5Y 7/4



**A:8 Blackish Green**  
MS: 2.5BG 2/2



**A:9 Moderate Reddish Brown**  
MS: 7.5R 3/6



**B:1 Light Yellowish Brown**  
MS: 10YR 6/4



**B:2 Dark Yellow**  
MS: 5Y 6/6



**B:3 Light Yellow**  
MS: 2.5Y 8/6



**B:4 Moderate Yellow**  
MS: 2.5Y 7/6



**B:5 Light Brown**  
MS: 7.5YR 5/4



**B:6 Moderate Brown**  
MS: 7.5YR 4/4



**B:7 Moderate Yellowish Brown**  
MS: 10YR 5/4



**B:8 Grayish Brown**  
MS: 5YR 3/2



**B:11 Grayish Olive Green**  
MS: 5GY 4/2



**B:12 Grayish Green**  
MS: 10G 4/2



**B:13 Moderate Olive Brown**  
MS: 2.5Y 4/4



**B:14 Dark Grayish Olive**  
MS: 10Y 2/2



**B:15 Dark Grayish Yellow**  
MS: 5Y 6/4



**B:17 Light Olive**  
MS: 10Y 5/4



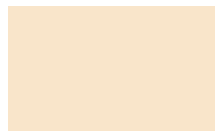
**B:18 Dark Reddish Brown**  
MS: 2.5YR 2/4



**B:19 Black**  
MS: N 0.5/



**C:4 Yellowish White**  
MS: 5Y 9/1



**C:5 Yellowish White**  
MS: 2.5Y 9/2



**D:1 Brownish Pink**  
MS: 7.5YR 7/2



**D:2 Light Brown**  
MS: 5YR 6/4



**E:1 Light Grayish Yellowish Brown**  
MS: 10YR 6/2



**E:2 Strong Yellowish Brown**  
MS: 7.5YR 6/8



**E:3 Grayish Reddish Orange**  
MS: 2.5YR 5/6



**E:4 Grayish Yellow Green**  
MS: 7.5GY 6/2

**FIND OUT MORE!**  
[www.detroitmi.gov/hdc](http://www.detroitmi.gov/hdc)