



Greater Corktown Neighborhood Planning Framework

The City of Detroit has launched the Greater Corktown Planning Framework study. The Planning Framework study is an initiative that engages residents in creating a **plan that promotes inclusive growth of Detroit's oldest established neighborhood, while preserving the community's unique character, cultural heritage and integrity.**

What is Greater Corktown?

Greater Corktown is the name of the planning study area. It represents several different neighborhoods, including North Corktown, Historic Corktown, and Core City. Over the next 10-12 months, the process will identify the challenges and opportunities across these areas and develop practical strategies around:

- Urban design and landscape;
- Development and zoning;
- Streetscapes and connectivity;
- Historic preservation; and
- Housing development and rehabilitation.

Elements of the Conversation

Building on topics discussed in the CBO process, the Planning Framework will explore key neighborhood issues across the Greater Corktown study area, including issues around:



GREENING

- Open spaces
- Landscape
- Urban agriculture
- Stormwater & sustainability



TRAVELLING

- Connections
- Street improvements
- Mobility & transit
- Driving & parking



BUILDING

- Historic preservation
- Public land
- Housing & business activity
- Mixed use development
- Zoning & phasing

Get Involved!

Contact the project team to learn more about the Planning Framework process and to receive information on upcoming events.

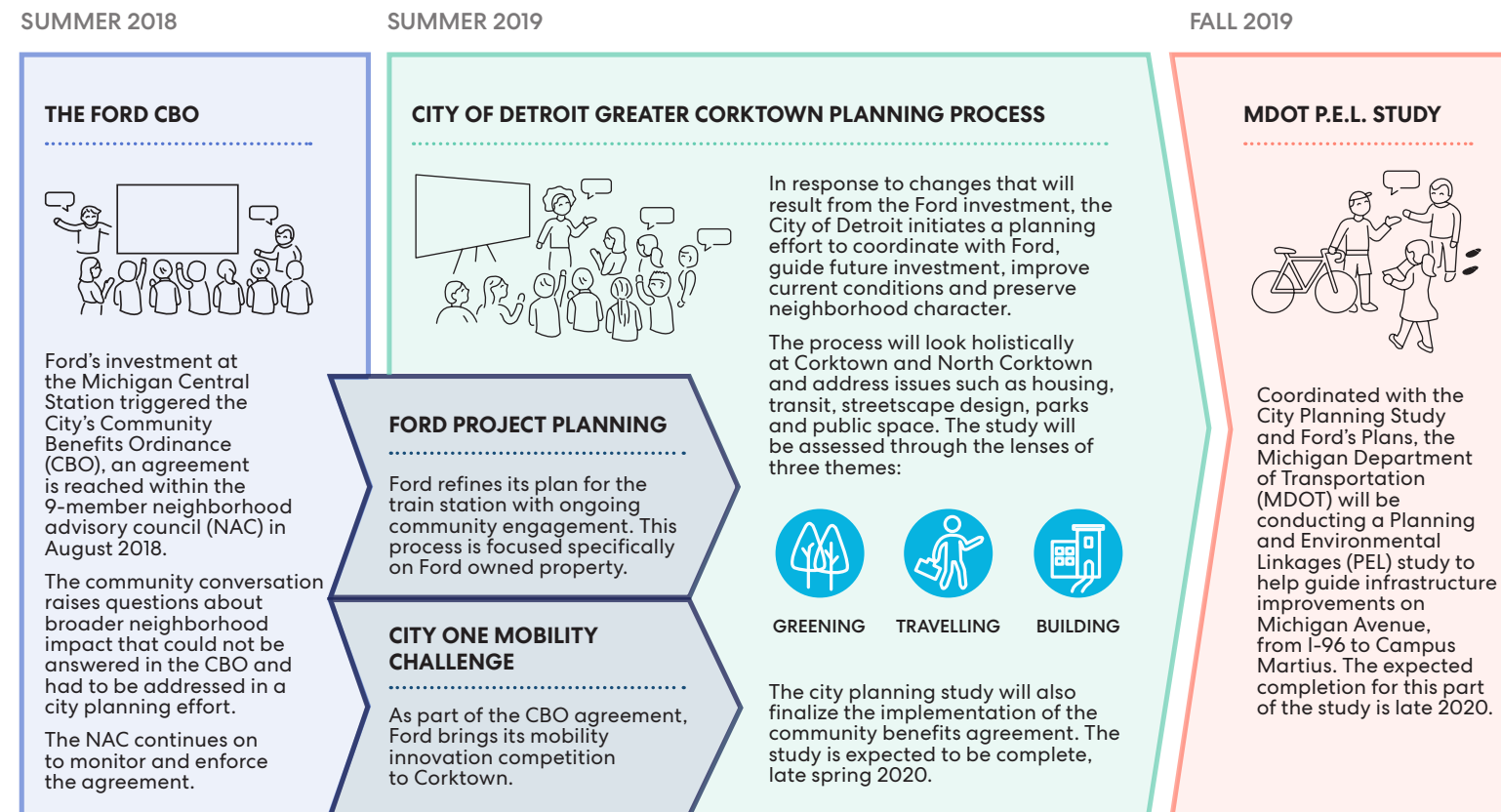
Kevin Schronce
Design Director
(313) 224.9489

schroncek@detroitmi.gov
Planning and Development Department
Coleman A. Young Municipal Center
2 Woodward Avenue - Suite 808
Detroit, MI 48226
Phone: (313) 224-1339
Fax: (313) 224-1310
Hours: Monday - Friday 9:00am-5:00pm

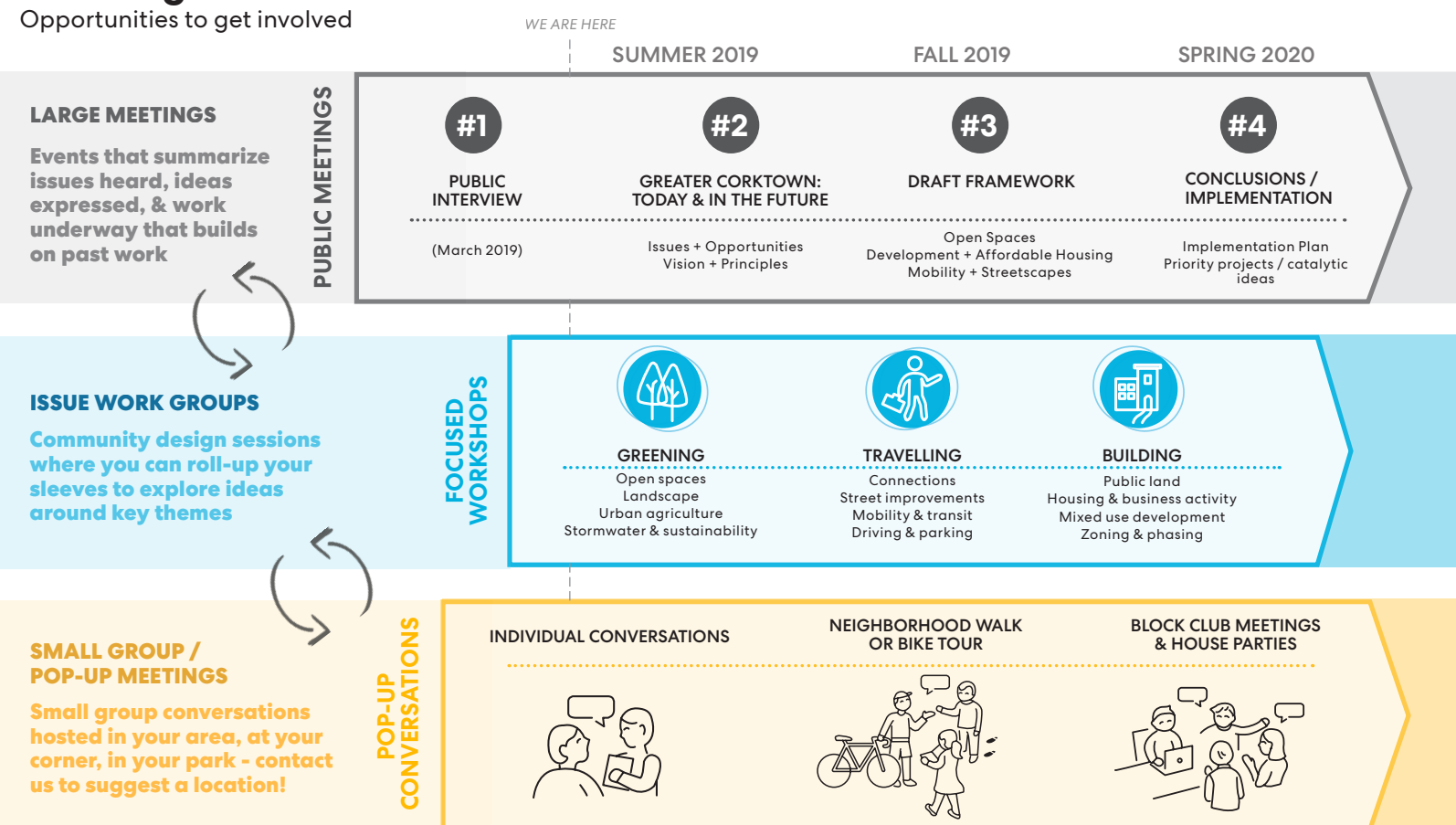
Visit our website:

www.detroitmi.gov/greatercorktown

Planning Processes



Planning Framework Timeline



Existing Conditions

Below are some of the existing conditions that characterize the neighborhood fabric. Do you have insight on particular issues? See the back of this packet to contact our team and share your perspective!

FUTURE LAND DEVELOPMENT Michigan Central Station & CBO Agreement



AREAS OF PUBLIC OWNERSHIP Potential Community Building Uses



NEIGHBORHOOD CONNECTIONS Reach & Impact Surrounding Neighborhoods



Greater Corktown Planning Framework Study Area

