

# STREETSCAPE IMPROVEMENTS

Concept - Looking West on Kercheval at Van Dyke



## KERCHEVAL AVE

### REDESIGN AND CONSTRUCTION (BELLEVUE STREET TO FISCHER STREET)

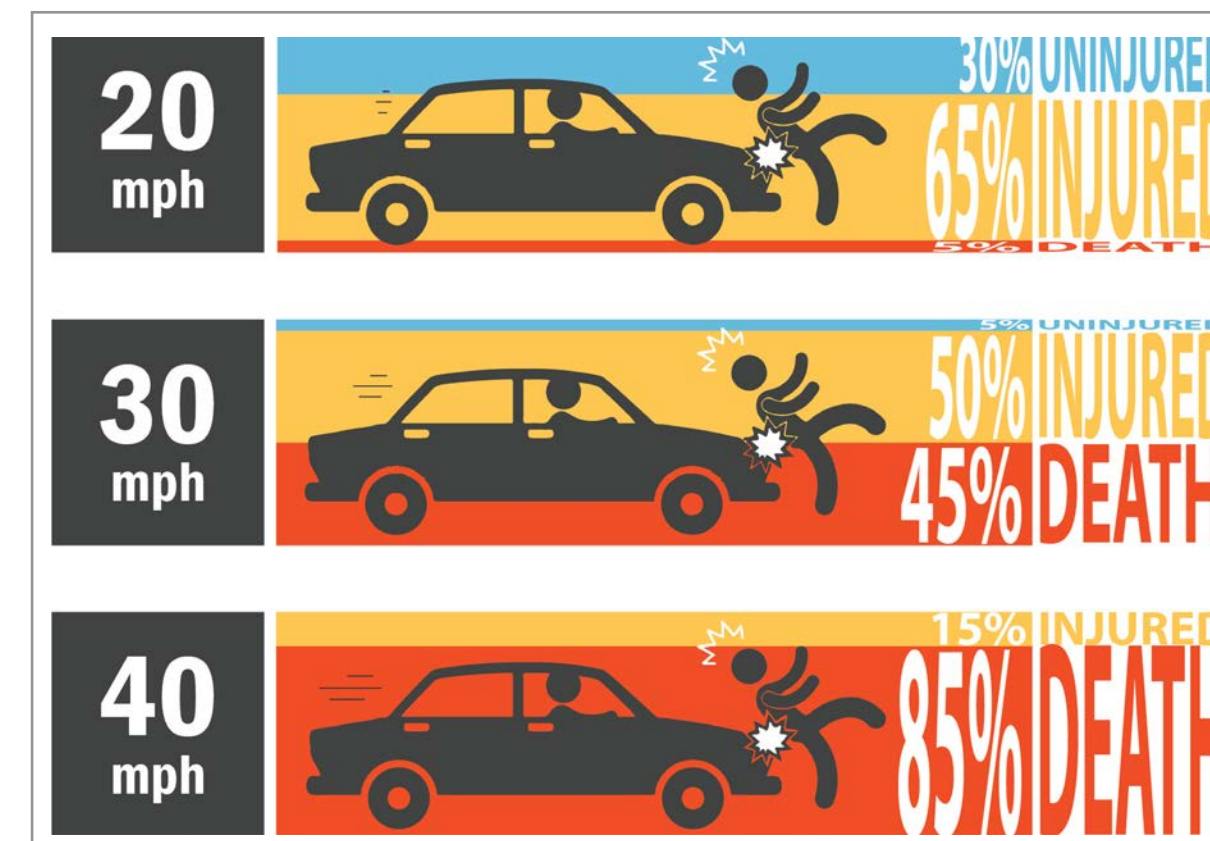
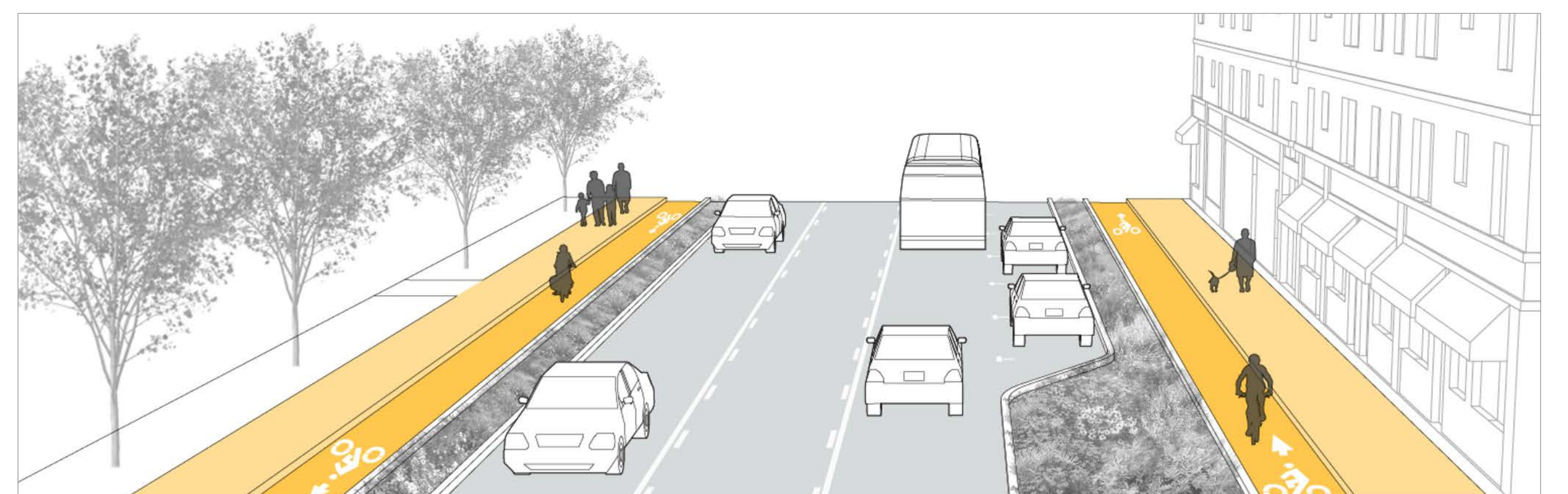
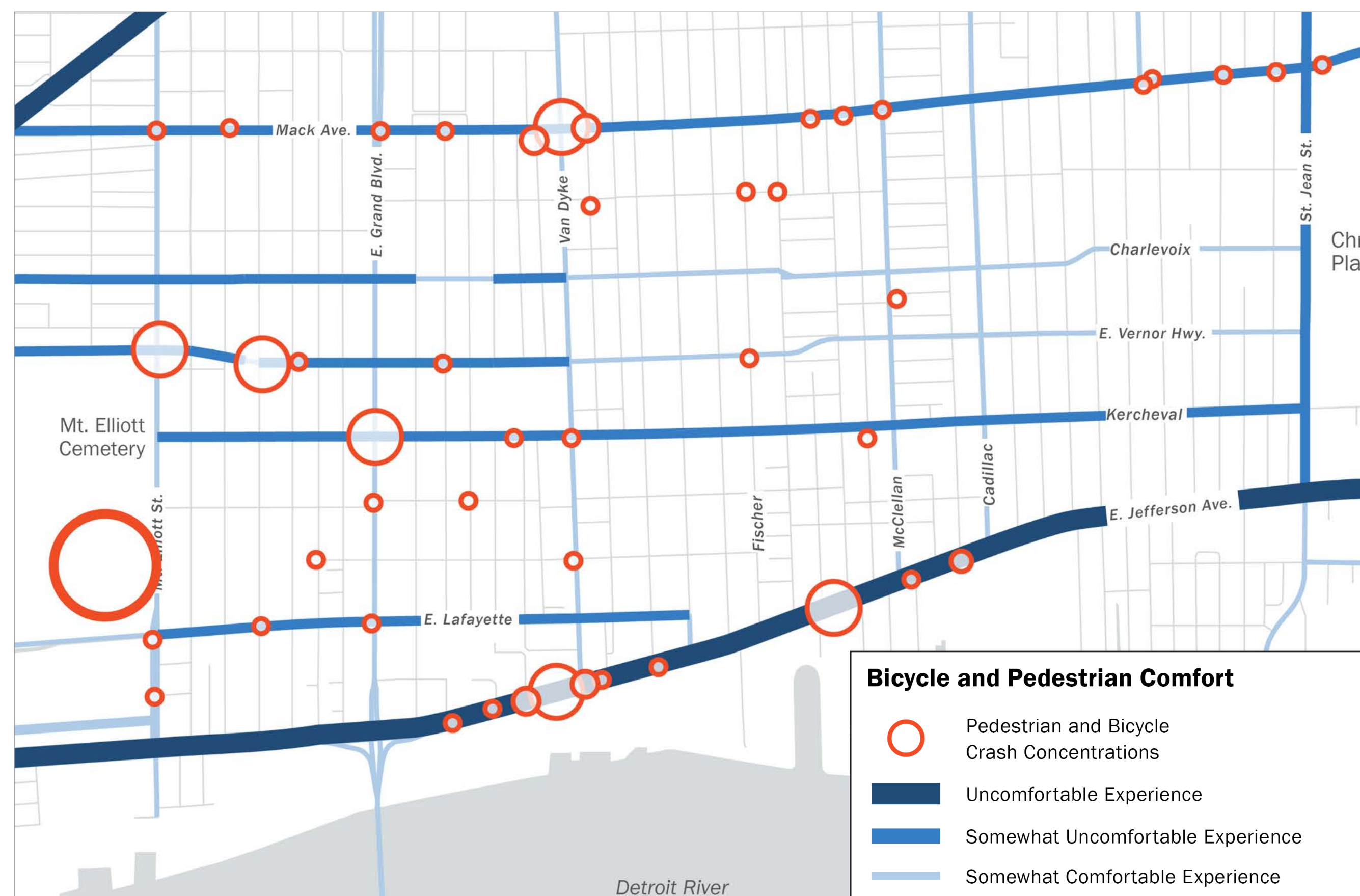
#### STREET UPGRADES

Kercheval Avenue serves residential neighborhoods, pockets of existing and emerging businesses, and new development. The City will be improving a one-mile segment of Kercheval to encourage slower traffic and a safer street environment for residents, neighborhood visitors, and non-motorized travel. Additionally, streetscape improvements will include design features that can create a beautiful corridor to encourage active sidewalk life, strengthen foot traffic for existing and new businesses, and boost community life at Butzel Playfield and Butzel Family Recreation Center.

IMPROVE  
PEDESTRIAN  
SAFETY



SHARE ROAD  
WITH NON-  
MOTORIZED  
TRAVELERS



Observably, vehicular traffic through the Islandview/Greater Villages area is often well beyond 40mph. The City seeks to re-examine and re-design street configuration and streetscape design to keep neighborhood residents and visitors safe.



CREATE A  
HEALTHY AND  
BEAUTIFUL  
CORRIDOR



SUPPORT  
WALKABLE  
LOCAL RETAIL

In 2016, Detroit was ranked as the **fifth most dangerous** city for pedestrians in America.