

PART III

SITE PLANS

**CITY OF DETROIT
GENERAL SERVICES DEPARTMENT**

O'SHEA AND BUTLER PARK IMPROVEMENTS REQUEST FOR PROPOSAL

TABLE OF CONTENTS

DIVISION TWO: SITE PLANS

A.	O'Shea Playfield	2
B.	Butler Playfield	16

PART III

SITE PLANS

**CITY OF DETROIT
GENERAL SERVICES DEPARTMENT**

O'SHEA AND BUTLER PARK IMPROVEMENTS REQUEST FOR PROPOSAL

TABLE OF CONTENTS

DIVISON TWO: SITE PLANS

A.	O'Shea Playground	2
B.	Butler Playground	16

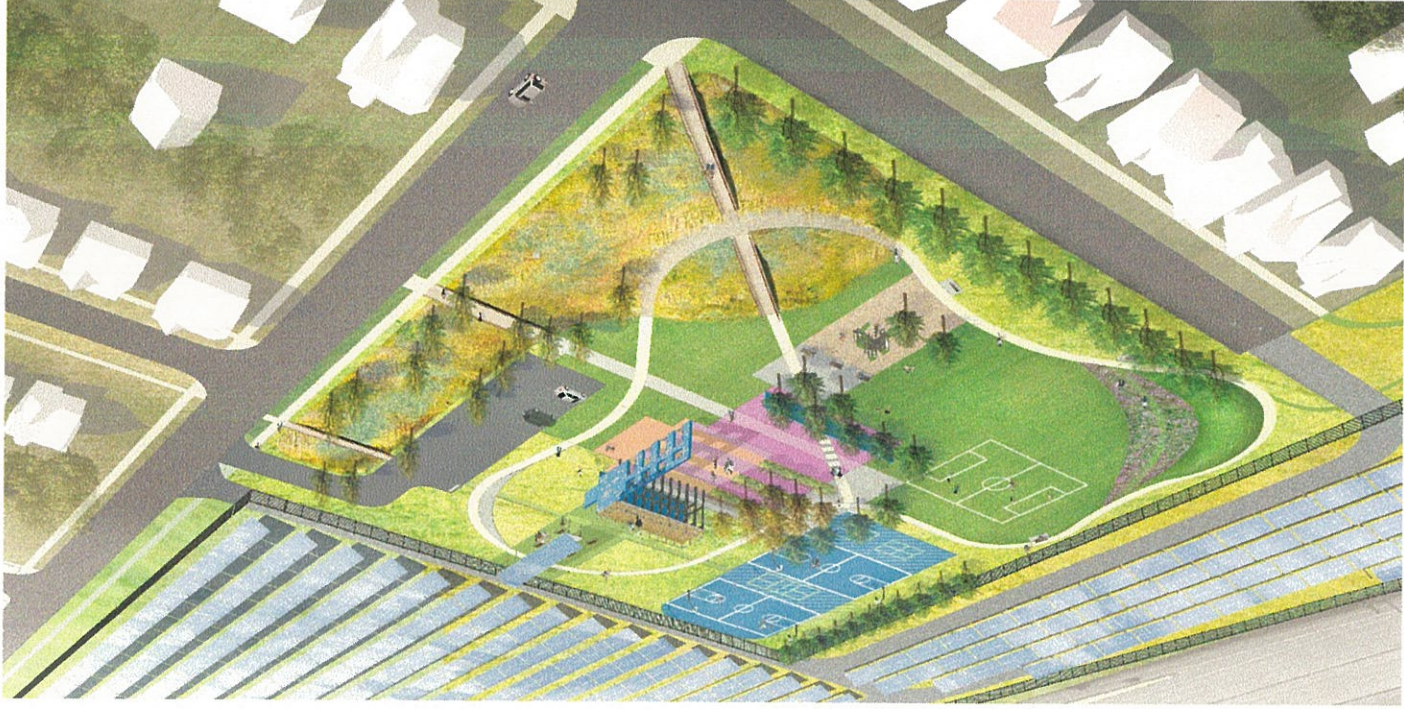
A B C D E F G H

O'SHEA SOLAR INITIATIVE

DETROIT, MI

100% CONSTRUCTION DOCUMENTS

Spackman Mossop and Michaels | Landscape Architect



PROJECT DIRECTORY

OWENBURSER
City of Detroit
Coleman A. Young Municipal Center
2 Woodward Avenue
New Orleans, LA 70118
Detroit, MI 48226
TEL: (504) 218-8991
EMILY BULLOCK
emily@sm2group.com
WES MICHAELS
wes@sm2group.com

LANDSCAPE ARCHITECT
Spackman Mossop Michaels
7735 Maple Street
New Orleans, LA 70118
Detroit, MI 48226
TEL: (504) 218-8991

MAYOR
Mike Dugan

CITY COUNCIL
Council President - Brenda Jones
Council Member At Large - Janeé L Ayers
District 1 - James Tate
District 2 - George Cushingberry Jr.
District 3 - Scott Benson
District 4 - André L. Spivey
District 5 - Mary Sheffield
District 6 - Raquel Castañeda-López
District 7 - Gabe Leland

**DEPARTMENT OF PLANNING
AND DEVELOPMENT**
Maurice Cox, Director

O'SHEA SOLAR INITIATIVE DETROIT, MICHIGAN



**SPACKMAN
MOSSOP =
MICHAELS**
7735 Maple Street
New Orleans | LA | 70118
T: 504.218.8991
LANDSCAPE ARCHITECTS

DATE: 27 FEB 2017

REV.

COVER

DRAWING TITLE

WILLIAMS

DRAWN BY

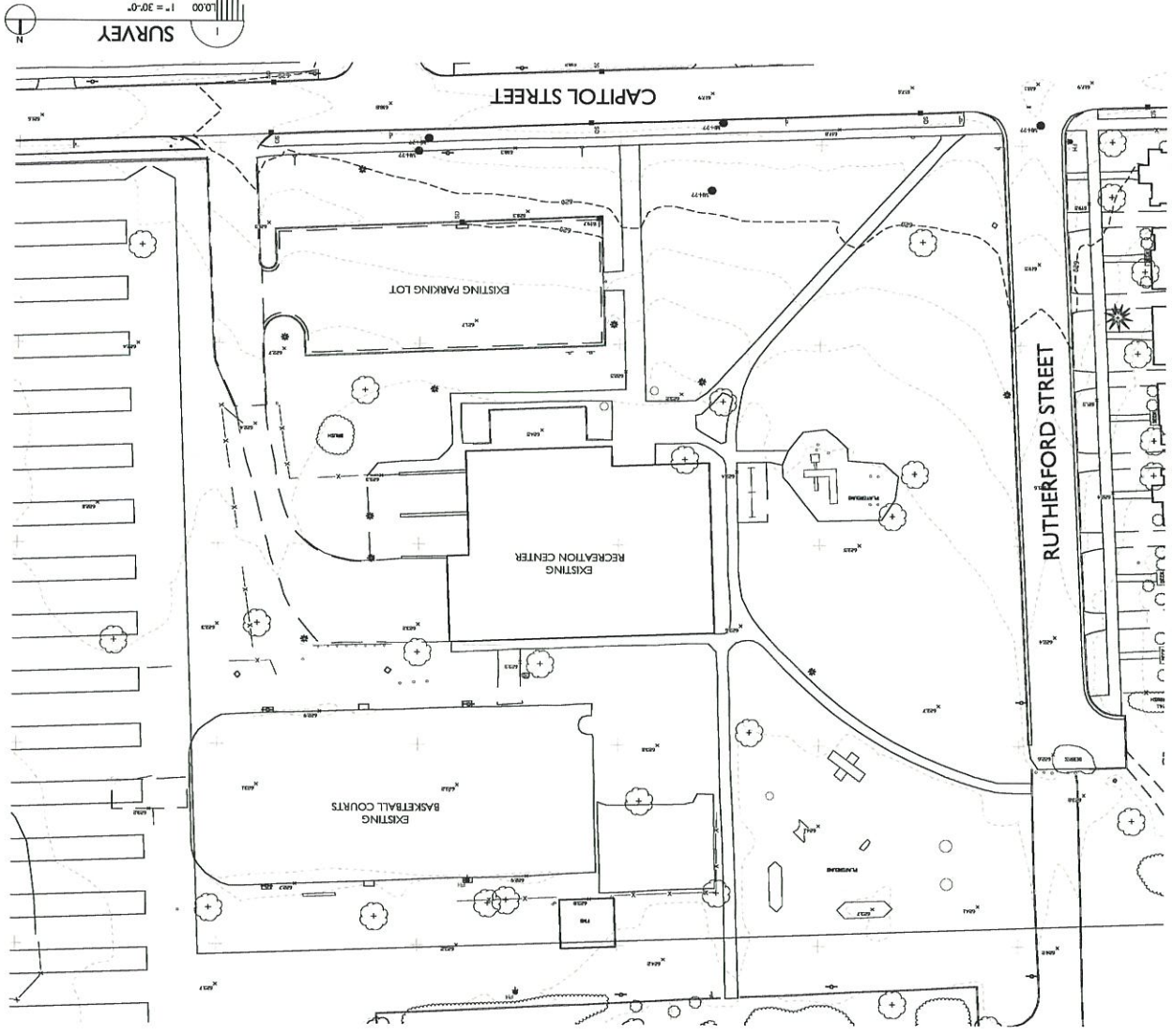
16081

JOB NO. DRAWING NO.

A B C C D F G H



2 VICINITY MAP
1" = 300'-0"
1/8" = 30'-0"



CAPITOL STREET

RUTHERFORD STREET

EXISTING PARKING LOT

EXISTING RECREATION CENTER

EXISTING BASKETBALL COURTS

1 SURVEY
1" = 30'-0"
1/8" = 30'-0"

INDEX OF DRAWINGS

L0.01	DEMOLITION PLAN ALT #1
L1.00	SITE PLAN
L1.01	SITE LAYOUT PLAN
L1.02	PLANTING PLAN & SCHEDULE
L1.03	COURT LAYOUT
L2.00	PAVING & TREE PLANTING DETAILS
L2.01	BASKETBALL COURT DETAILS
L2.02	COURT DETAILS
L2.03	SITE FURNISHING DETAILS
L2.04	SITE FURNISHING DETAILS
L2.05	PLAY MOUND

CLARIFICATION OF REFERENCE DESIGNATIONS

●	MH - MAN HOLE
■	SD - STORM DRAIN

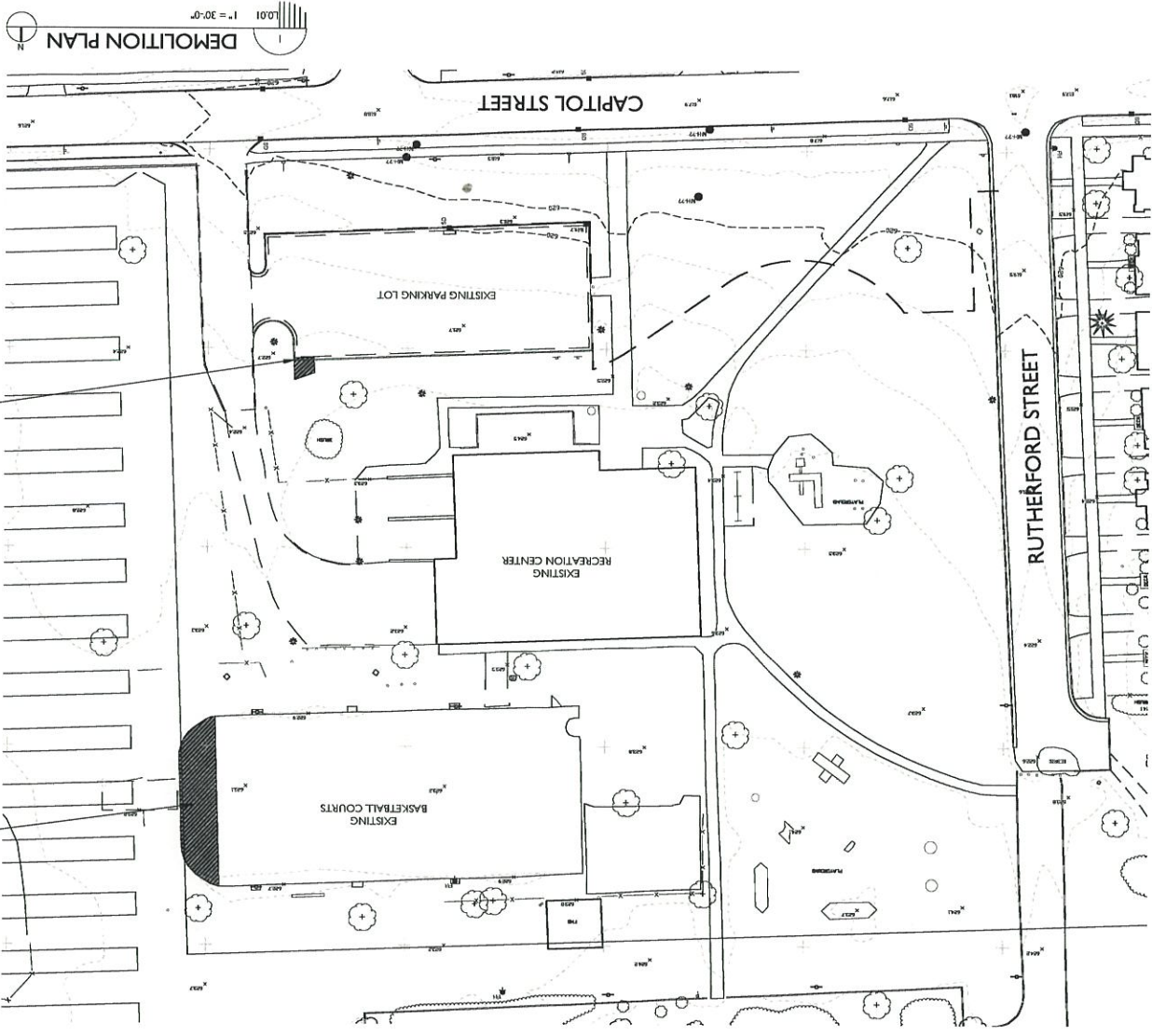
O'SHEA SOLAR INITIATIVE DETROIT, MICHIGAN



SPACKMAN
MOSSOP =
MICHAELS
7735 Maple Street
New Orleans | LA | 70118
T: 504.218.8991
LANDSCAPE ARCHITECTS

DATE: 27 FEB 2017
REV.
DRAWING TITLE
INDEX
DRAWN BY: WILLIAMS
JOB NO.: 16081
DRAWING NO.: L0.00

A B C C D E F G H



O'SHEA SOLAR INITIATIVE
DETROIT, MICHIGAN



SPACKMAN
MOSSOP =
MICHAELS

LANDSCAPE ARCHITECTS

7735 Maple Street
 New Orleans | LA 70118
 T: 504.218.8791

DATE: 27 FEB 2017
 REV.
 DRAWING BY: WILLIAMS
 DRAWING TITLE: DEMOLITION PLAN

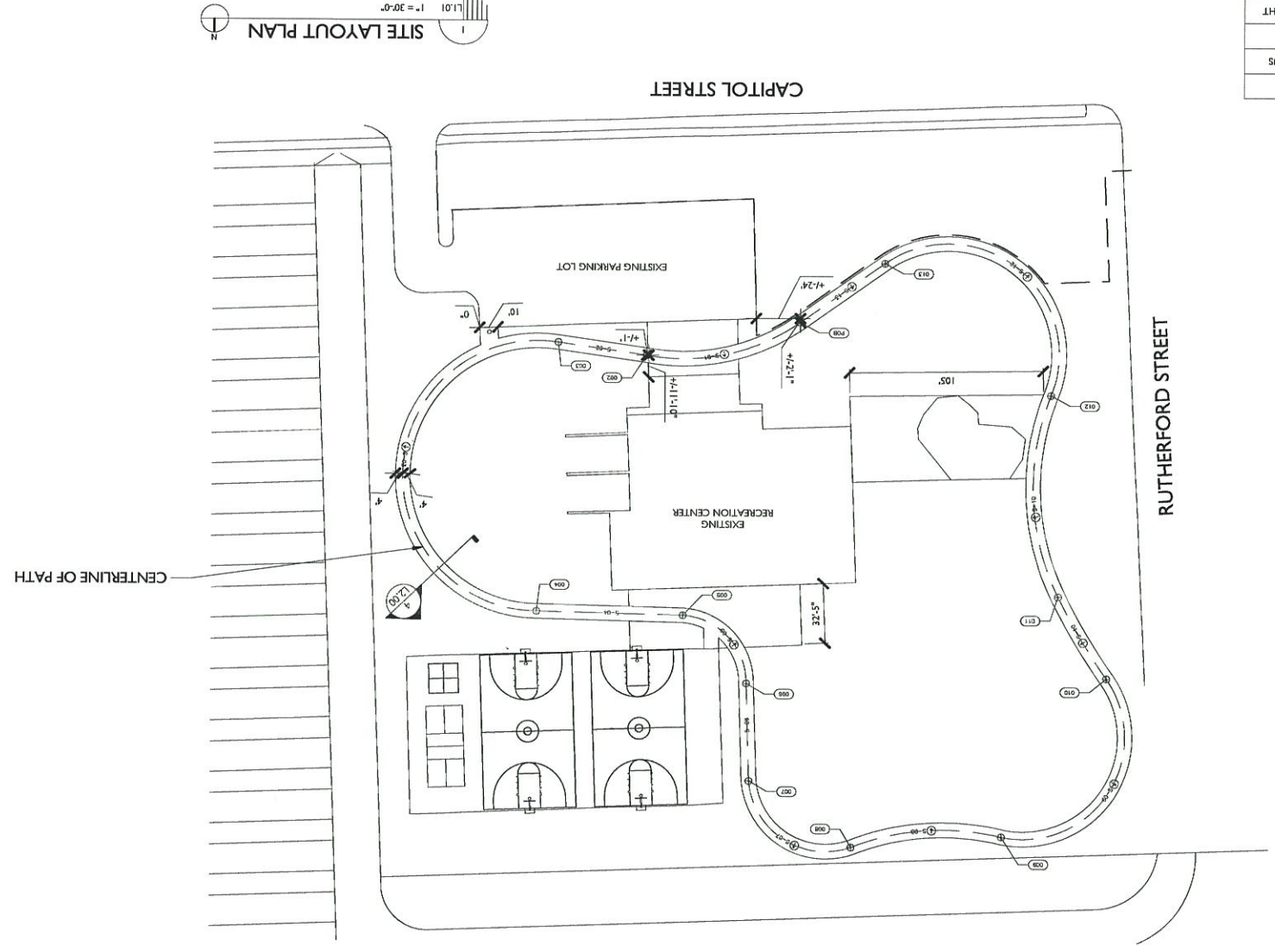
JOB NO.: 16981
 DRAWING NO.: L0.01

SEGMENT	START	END	LENGTH	RADIUS
01	POB	002	87'-5"	110'
02	002	003	48'-5"	STRAIGHT
03	003	004	241'-7"	73'-6"
04	004	005	79'-4"	STRAIGHT
05	005	006	55'-7"	36'-9"
06	006	007	53'	STRAIGHT
07	007	008	76'-5"	41'-1"
08	008	009	82'-11"	136'-2"
09	009	010	132'-7"	55'-4"
10	010	011	51'-9"	323'-7"
11	011	012	112'-9"	135'
12	012	013	153'-1"	60'-1"

CURVE DATA

City of Detroit
Department of Public Works

04/11/2013



1 SITE LAYOUT PLAN
1" = 30'-0"

DATE: 27 FEB 2017	REV.
DRAWING TITLE: SITE LAYOUT PLAN	
DRAWN BY: WILLIAMS	
JOB NO. 16081	

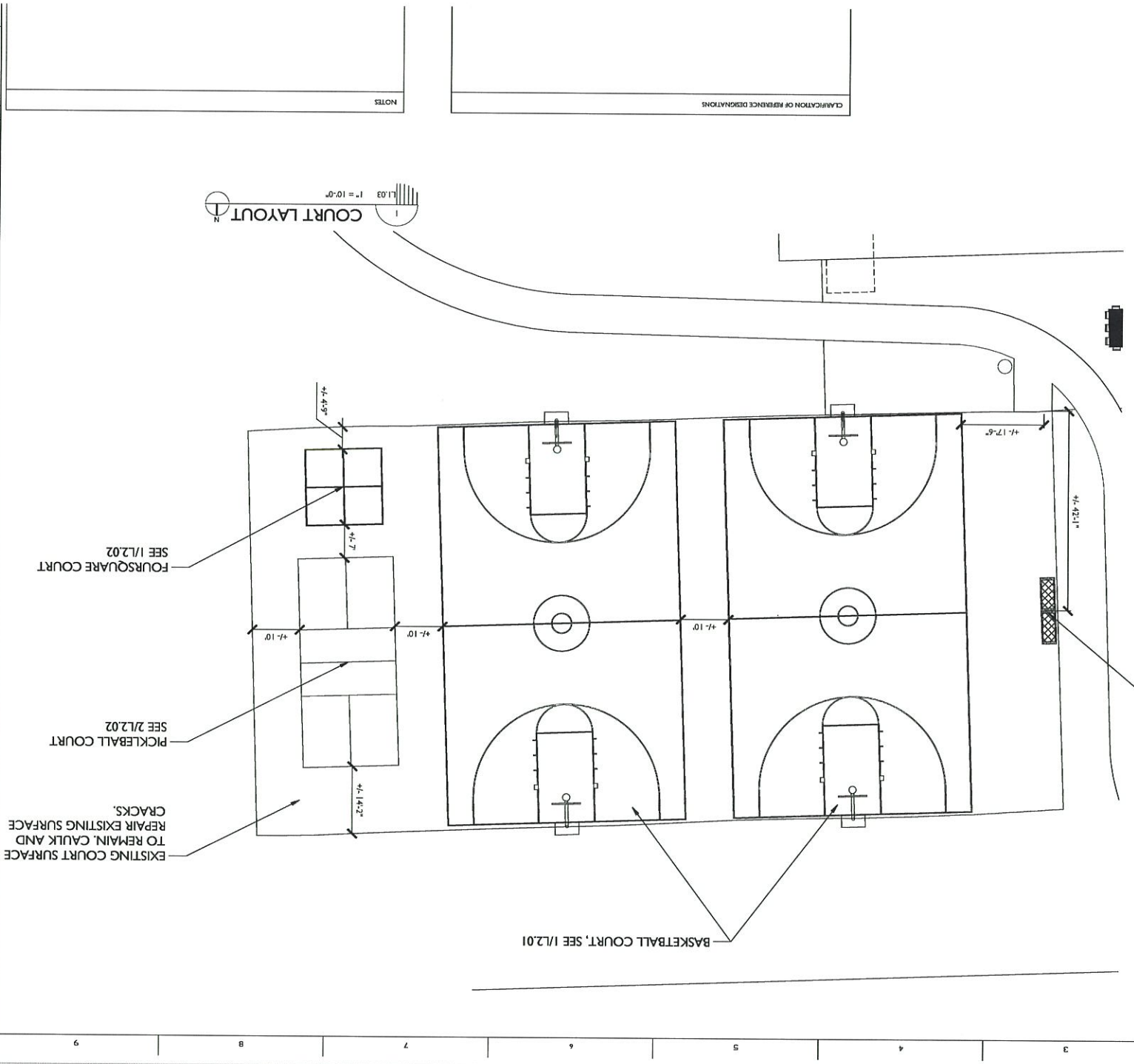
O'SHEA SOLAR INITIATIVE
DETROIT, MICHIGAN



SPACKMAN = MOSSOP
LANDSCAPE ARCHITECTS
7735 Maple Street
New Orleans | LA | 70118
T: 504.218.8991

A B C D E F H

COURT LAYOUT
1
L1.03
1" = 10'-0"

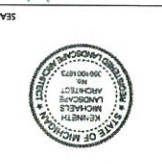


(2) BACKLESS BENCHES, SEE 4/L2.03

CLARIFICATION OF REFERENCE DESIGNATIONS

NOTES

O'SHEA SOLAR INITIATIVE
DETROIT, MICHIGAN



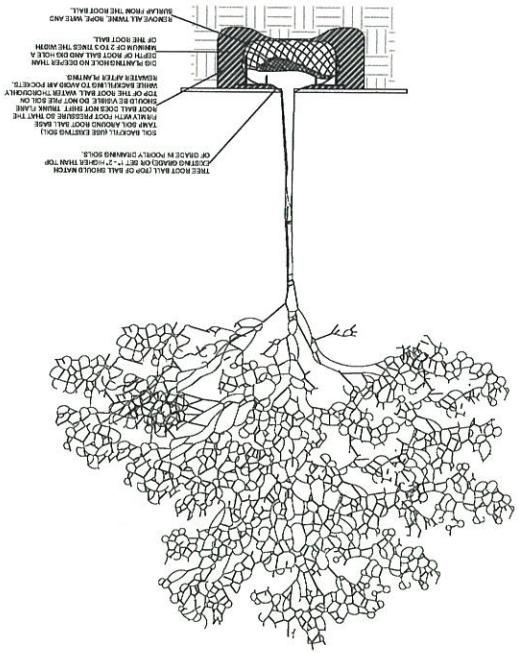
SPACKMAN
MOSSOP =
MICHAELS

LANDSCAPE ARCHITECTS
 7735 Maple Street
 New Orleans | LA | 70118
 T: 504.218.8991

DATE: 27 FEB 2017
 REV.
 DRAWING TITLE: COURT LAYOUT
 DRAWN BY: WILLIAMS
 L1.03
 JOB NO.: 16081
 DRAWING NO.: 18-17388-02

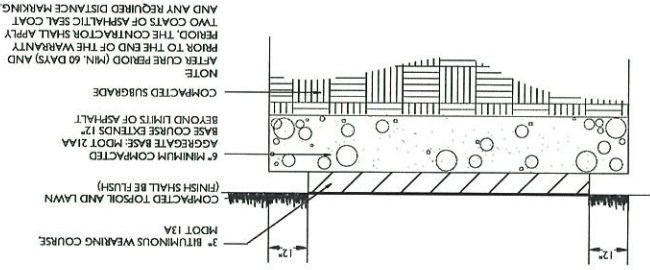
2 TREE PLANTING IN CRUSHED LIMESTONE SURFACE DETAIL

L200 NOT TO SCALE



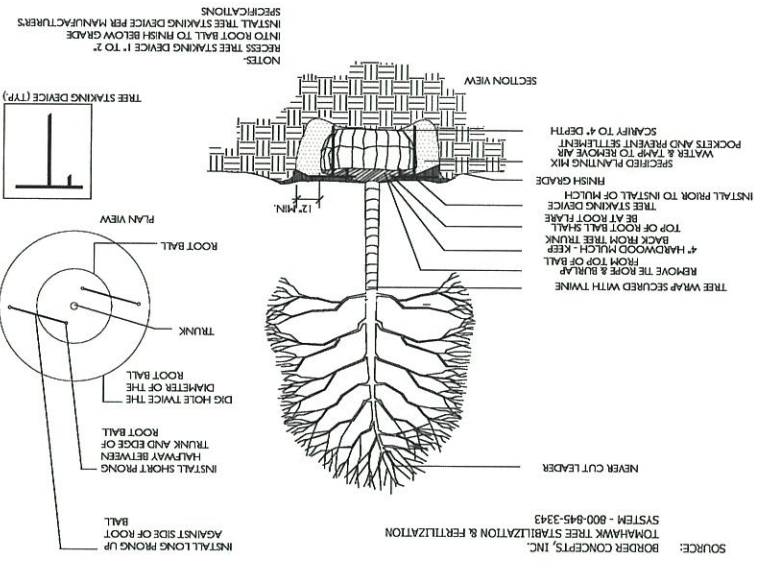
4 ASPHALT WALKING TRAIL

L200 NOT TO SCALE



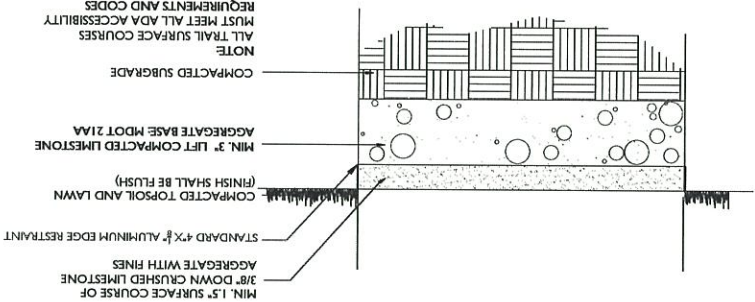
1 TREE PLANTING DETAIL, TYPICAL

L200 NOT TO SCALE



3 CRUSHED LIMESTONE PLAZA

L200 NOT TO SCALE



L2.00

PLANTING & TREE PAVING DETAILS

DRAWING TITLE

WILLIAMS BY

DATE: 27 FEB 2017

REV.

DRAWING NO.

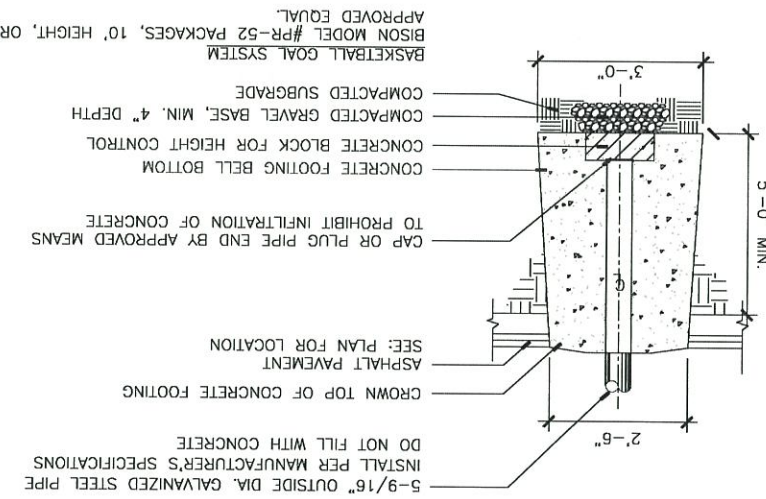
16081

O'SHEA SOLAR INITIATIVE
DETROIT, MICHIGAN



SPACKMAN = MOSSOP = MICHAELS
LANDSCAPE ARCHITECTS
7735 Maple Street
New Orleans | LA | 70118
T: 504.218.8791

A B C D E F G H

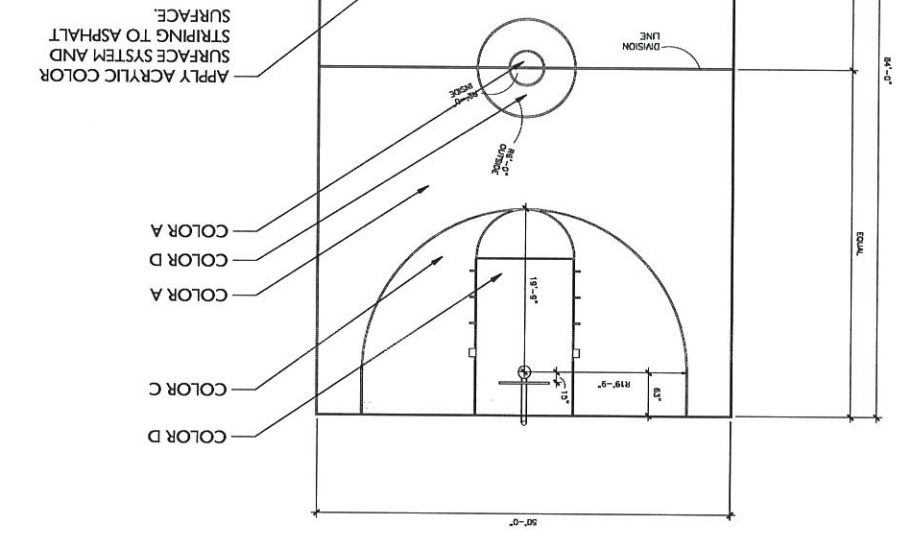
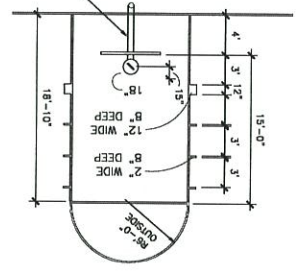


INSTALL PER MANUFACTURER'S SPECIFICATIONS
DO NOT FILL WITH CONCRETE
CROWN TOP OF CONCRETE FOOTING
ASPHALT PAVEMENT
SEE: PLAN FOR LOCATION
CAP OR PLUG PIPE END BY APPROVED MEANS
TO PROHIBIT INFILTRATION OF CONCRETE
CONCRETE FOOTING BELL BOTTOM
CONCRETE BLOCK FOR HEIGHT CONTROL
COMPACTED GRAVEL BASE, MIN. 4" DEPTH
COMPACTED SUBGRADE
BASKETBALL GOAL SYSTEM
BISON MODEL #PR-52 PACKAGES, 10' HEIGHT, OR
APPROVED EQUAL.

3 BASKETBALL POLE INSTALLATION STANDARD
1/201 NOT TO SCALE

NOTE:
MARKINGS SHALL BE WHITE AND
SHALL CONTRAST WITH THE COLOR
OF THE BOUNDING LINES.
THE BOUNDARY LINES SHALL BE
PAINTED WHITE.
ALL LINES SHALL BE 2" WIDTH.
TYP.

2 BASKETBALL COURT KEY LAYOUT PLAN
1/201 NOT TO SCALE



NOTE:
THE COLOR OF THE LANE SPACE
MARKINGS SHALL BE WHITE AND
SHALL CONTRAST WITH THE COLOR
OF THE BOUNDING LINES.
THE THREE POKE LINE FREE
THROW LANE LINE AND
SEMICIRCLE SHALL BE WHITE.
THE BOUNDARY LINES SHALL BE
PAINTED WHITE.
ALL LINES SHALL BE 2" WIDTH.
TYP.

1 BASKETBALL COURT LAYOUT PLAN - TWO GOALS
1/201 NOT TO SCALE

NOTES
ALL COURTS PAINTED IN (4) COLORS, COLORS TO BE DETERMINED BY LANDSCAPE ARCHITECT.
SHALL BE TWO INCHES WIDE EXCEPT FOR BASE LINES WHICH SHALL BE FOUR INCHES WIDE.
INCLUDE NUMBER SIGNS AS SPECIFIED.

SPACKMAN
MOSSOP =
MICHAELS
7735 Maple Street
New Orleans | LA | 70118
T: 504.218.8991



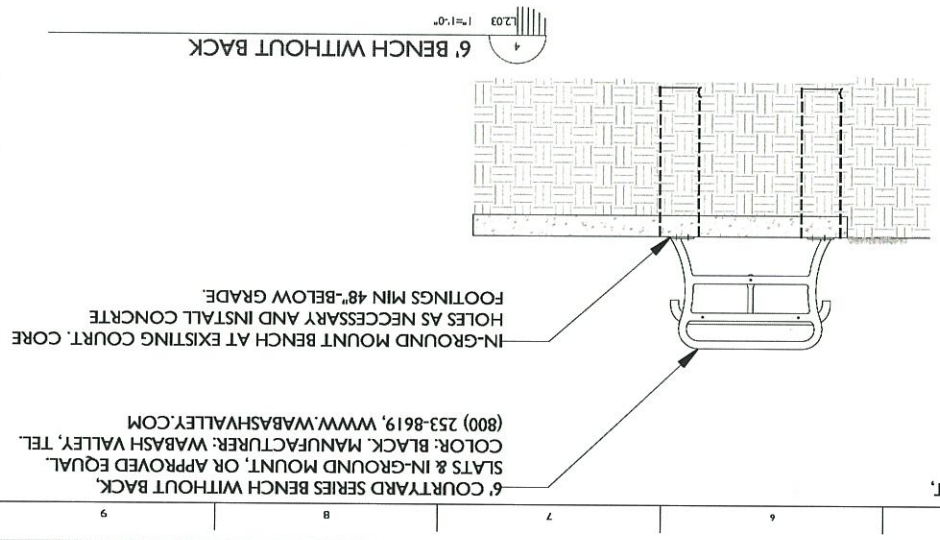
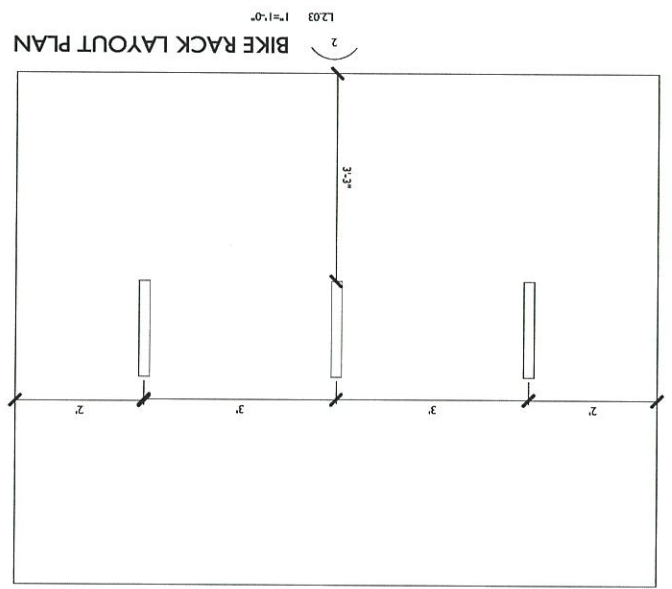
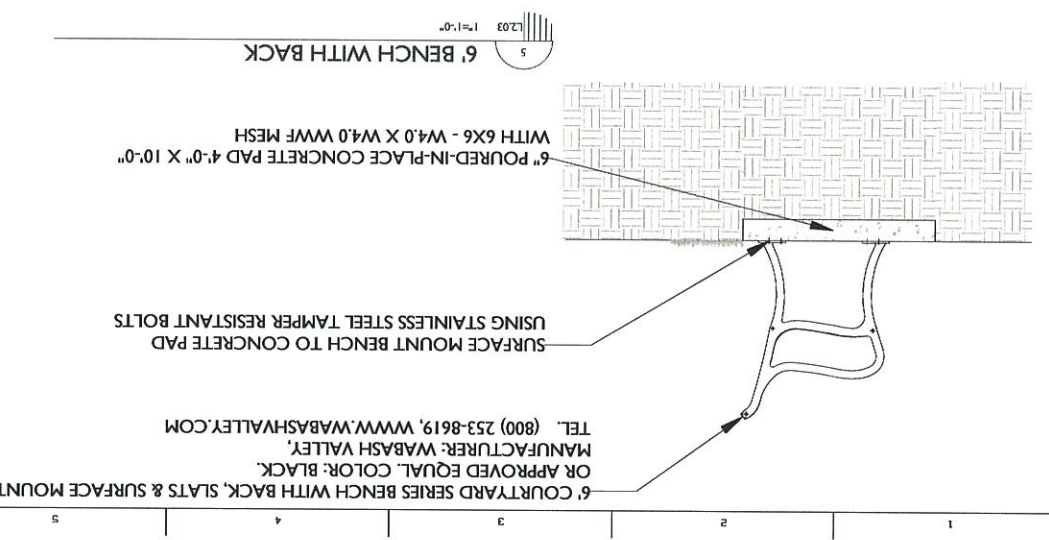
O'SHEA SOLAR INITIATIVE
DETROIT, MICHIGAN

DATE: 27 FEB 2017
REV. _____

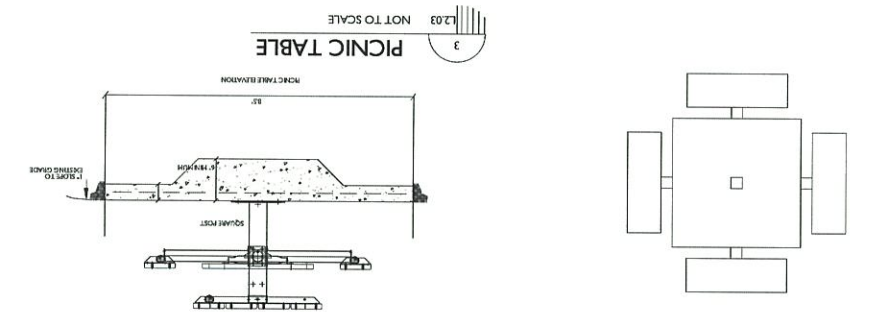
BASKETBALL COURT
DETAILS

DRAWING NO. L2.01
DRAWN BY: WILLIAMS
JOB NO. 16081

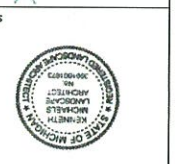
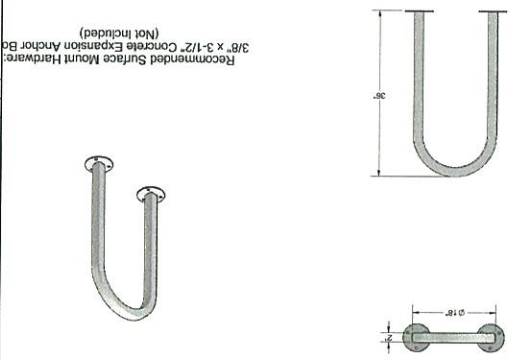
H
D
F
E
D
C
B
A



ULTRASITE MODEL #338-P SQUARE SINGLE PESTAL TABLE, SURFACE MOUNTED,
PERFORATED, COLOR: BLACK, OR APPROVED EQUAL.



ULTRASITE MODEL #5821-SM INVERTED RACK, SURFACE MOUNTED, PERFORATED, COLOR: BLACK OR APPROVED EQUAL.



O'SHEA SOLAR INITIATIVE
DETROIT, MICHIGAN

A B C D E F G H

ULTRASITE
800-45-ULTRA
www.ultrasite.com

ITEM NO.	PartNo	DESCRIPTION	QTY
1	P-01-05-0053	receptacle surface mount	1
2	33-02-0007	5/16" Flat Washer (SS)	8
3	33-05-0029	5/16" x 1" Machine Bolt (SS)	4
4	33-03-0012	5/16" Kap Nut (SS)	4

SM KIT

Recommended Surface Mount Hardware:
3/8" x 3-1/2" Concrete Expansion Anchor Bolts
(Not Included)

— Attach the SM KIT to the PR-32 as shown using specified hardware.

SURFACE MOUNT FOR TRASH RECEPTACLE

Frame: 2-3/8" O.D. x 12 gauge pre-galvanized structural steel tubing. Surface mounting points are 3 gauge 8" x 8" steel flat bar with four holes. Receptacle mounting points are 3 gauge 6" x 6" steel flat bar with 4 holes. All electrically MIG welded.

Frame Coating: Electrostatic powder coated application oven cured.

Hardware: All stainless steel hardware fasteners. (Included).

Dimensions: Overall dimension is 3-3/4" x 8" x 8".

SURFACE MOUNT MOUNTING OPTION

ULTRASITE MODEL #32, WITH LINER, NO LID, SURFACE MOUNTED, PERFORATED,
COLOR: BLACK, OR APPROVED EQUAL.

JOB NO. 16081
DRAWING NO. L2.04

DRAWING TITLE
SITE FURNISHING
DRAWN BY WILLIAMS

DATE 27 FEB 2012
REV.

O'SHEA SOLAR INITIATIVE
DETROIT, MICHIGAN

LANDSCAPE ARCHITECTS
7735 Maple Street
New Orleans | LA | 70118
T: 504.218.8991
MOSSOP =
SPACKMAN

